



## 33 Millfield

Seaton Sluice, Whitley Bay NE26 4DD

- End Terraced House
- Viewing is Essential
- Superb Dining Kitchen
- Modern Shower Room
  - Rear Garden
- Immaculate Condition
  - Living Room
  - 2 Double Bedrooms
  - Driveway
  - No Upper Chain

**£189,950**







Immaculate condition throughout is this extremely well presented End Terraced House situated in the heart of Seaton Sluice village with local amenities close by. Being sold with no Upper Chain, internal viewing is essential to appreciate the quality of accommodation on offer.

Briefly comprising a welcoming Reception Hallway, Lounge with bay window, superb refitted modern Kitchen with ample wall & floor units with contrasting work surfaces incorporating sink unit with mixer tap, gas hob, electric oven, integrated fridge freezer washing machine and dishwasher and separate tumble dryer, centre island/table with storage cupboards. Under unit pelmet lighting, access to rear. To the first floor there is a spacious landing, 2 double Bedrooms and a modern Shower room comprising a good sized enclosure with mains shower, vanity hand wash basin, low level w.c.

Externally there is a garden area to the front, driveway offering convenient off street parking. To the rear there is a paved easy maintenance garden with outdoor storage area.

## Reception Hallway

## Living Room

12'7 x 11'5

## Dining Kitchen

17'7 x 11'6

## First Floor Landing

## Bedroom One

11'9 x 10'10

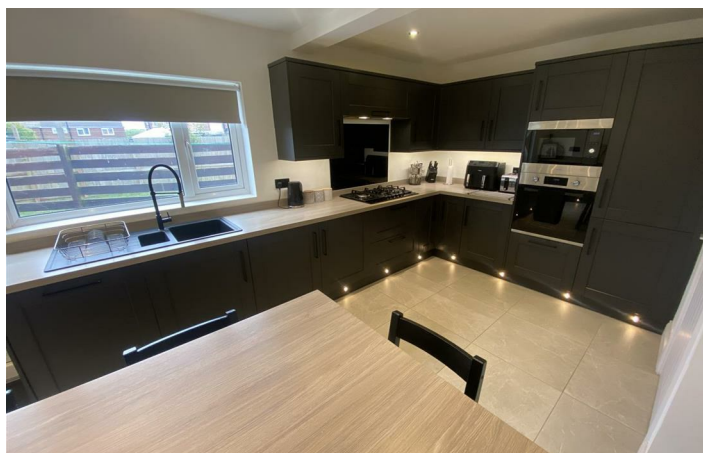
## Bedroom Two

11'8 x 11'1

## Shower Room

7'1 x 5'5

## Externally

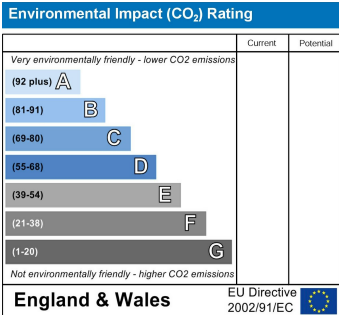
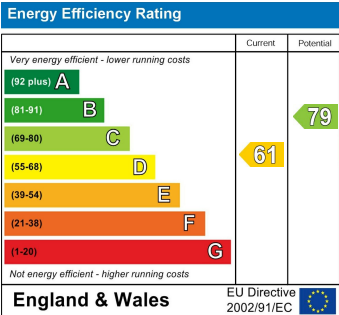








Local Authority Northumberland County Council  
Council Tax Band A  
EPC Rating D  
Tenure Freehold



ML Estates Sales Office

27 Avenue Road, Seaton Delaval, Tyne  
And Wear, NE25 0DT

Contact

0191 237 60 60  
sd@mlestates.co.uk  
www.mlestates.co.uk/

Agents Note: Whilst every care has been taken to prepare these particulars, they are for guidance purposes only. All measurements are approximate and for general guidance purposes only and whilst every care has been taken to ensure accuracy, they should not be relied upon and potential buyers/tenants are advised to recheck the measurements.