



112 Astley Road

Seaton Delaval, Whitley Bay NE25 0DG

- First Floor apartment
 - Lounge
 - Two Bedrooms
 - Gas central heating
- Viewing recommended
- Situated in centre of Seaton Delaval close to amenities
 - Modern Kitchen/Breakfast
 - Bathroom with shower
 - UPVC Double Glazing
 - No upper chain

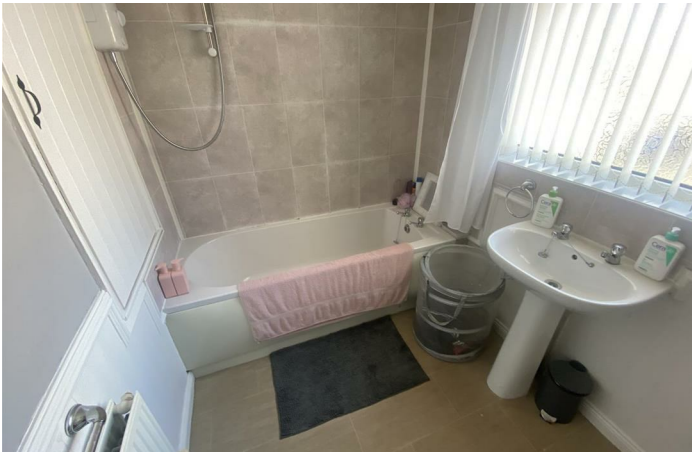
£79,950





Two bedroom first floor apartment located in the centre of Seaton Delaval, close to all local amenities, "New Super school", shops, hospital, bus stops, New station for Northumberland train line for commuting to Newcastle, close to Holywell Dene for scenic walks and The coast at Seaton Sluice.

The flat itself has a Hallway with stairs leading to Spacious Lounge leading to Kitchen/Breakfast room which has fitted wall and floor units with gas hob and oven, White Bathroom suite with shower over, Two Bedrooms.



Benefiting from gas central heating, UPVC double glazing and No upper chain.



Hallway

Lounge

14'0 x 18'1

Kitchen/Breakfast Room

8'6 x 10'3

Bathroom

Bedroom 1

14'0 x 7'9

Bedroom 2

9'0 x 14'0

Viewings

OFFICE HOURS:

Monday - Friday 9:00am - 5:00pm

Saturday 9:00am - 2:00pm

We are contactable after hours on our social media pages and via email
sd@mlestates.co.uk

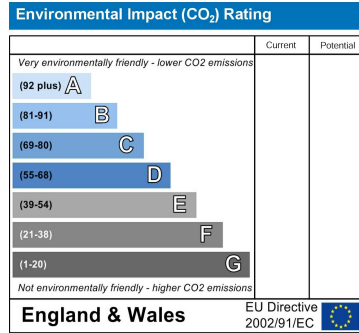
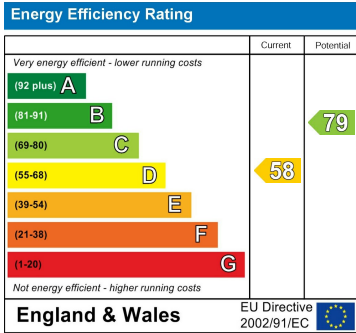
VIEWING: Viewing is strictly by appointment through: - ML Estates, 27 Avenue Road, Seaton Delaval, Tyne & Wear, NE25 0DT

DISCLAIMER: ML Estates Ltd endeavour to maintain accurate descriptions of properties in Virtual Tours, Brochures, Floor Plans and descriptions, however, these are intended only as a guide and purchasers must satisfy themselves by personal inspection.

The mention of any appliances and/or services within these does not imply that they are in full and efficient working order We recommend purchasers arrange for a qualified person to check all appliances/services before legal commitment..

The Tenure of the property should be clarified by your legal representative prior to exchange of contracts.

Local Authority Northumberland County Council
Council Tax Band A
EPC Rating D
Tenure Leasehold



ML Estates Sales Office

27 Avenue Road, Seaton Delaval, Tyne
 And Wear, NE25 0DT

Contact

0191 237 60 60
 sd@mlestates.co.uk
 www.mlestates.co.uk/

Agents Note: Whilst every care has been taken to prepare these particulars, they are for guidance purposes only. All measurements are approximate and for general guidance purposes only and whilst every care has been taken to ensure accuracy, they should not be relied upon and potential buyers/tenants are advised to recheck the measurements.