



96 Linden Road

Seaton Delaval, Whitley Bay NE25 0EX

- Cul-de-Sac position
- Ideal First Time Purchase
- Fitted Kitchen
- Office Area
- Driveway
- Semi Detached House
- 18'0 Living Room
- Conservatory
- Ground Floor Shower Room
- Gardens to Front & Rear

£169,950





Offered for sale with no upper chain is this Semi Detached home situated in a cul-de-sac on Linden Road with the added benefit of a Ground Floor Shower Room. Freehold and driveway for off street parking.

Briefly comprising Hallway, Study Area, Shower Room/w.c, Living Room with staircase to first floor, feature fire place, Fitted Kitchen with a range of wall & floor units, contrasting work surfaces, door opening to Conservatory overlooking rear garden. To the First Floor there 2 Bedrooms and a Bathroom with 3 piece suite of panelled bath, pedestal washbasin and low level w.c.

Externally there are gardens to both front & rear, driveway offering off street parking.

No onward chain.



Entrance Hallway

Office Area

7'8 x 4'6

Ground Floor Shower Room

Living Room

18'1 x 11'6

Kitchen

8'2 x 11'6

Conservatory

7'4 x 10'9

First Floor Landing

Bedroom 1

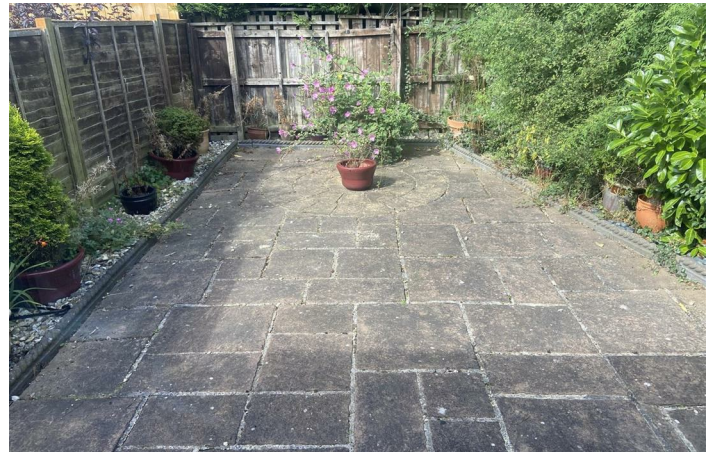
11'6 x 9'9

Bedroom 2

11'7 x 7'9

Bathroom

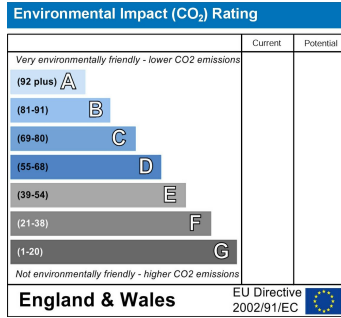
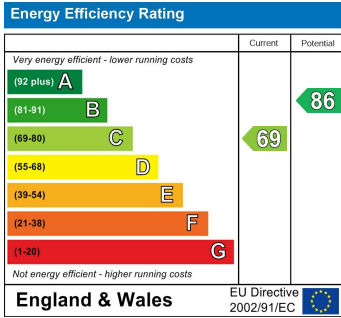
8'5 x 4'4







Local Authority Northumberland County Council
Council Tax Band A
EPC Rating C
Tenure Freehold



ML Estates Sales Office

27 Avenue Road, Seaton Delaval, Tyne
 And Wear, NE25 0DT

Contact

0191 237 60 60
 sd@mlestates.co.uk
 www.mlestates.co.uk/

Agents Note: Whilst every care has been taken to prepare these particulars, they are for guidance purposes only. All measurements are approximate and for general guidance purposes only and whilst every care has been taken to ensure accuracy, they should not be relied upon and potential buyers/tenants are advised to recheck the measurements.