



## 51 Hatfield Drive Seghill, Cramlington NE23 7TU

- Detached Bungalow
  - Three bedrooms
  - Fabulous 19Ft Sun room
- Family bathroom plus En-suite
- Landscaped side and rear gardens
- Deceptive accommodation
  - 20Ft Lounge/Diner
  - Fitted Kitchen
- Generous driveway
- No upper chain

**£329,950**







Internal viewing is essential to fully appreciate this extremely well presented detached bungalow situated in this desirable quiet cul-de-sac in the heart of Seghill, close to all local amenities and excellent road links for commuting.

The property offers extensive family accommodation, well maintained throughout with UPVC double glazing and gas central heater with new boiler being fitted in 2023.

Briefly comprising: Entrance lobby, Cloaks/WC, fitted Kitchen with range of wall and floor units with electric hob and double electric oven, integrated fridge/freezer, integrated dishwasher, sink unit, door to double garage with electric door, good sized Lounge/Diner, stunning sun room offering a lovely light and airy room with access to rear garden, 3 bedrooms, master with en-suite, family bathroom/WC offering a four piece suite of panelled bath, wash hand basin, low level WC and separate shower enclosure with mains shower. Externally there are landscaped gardens to side and rear with lawn, patio areas for garden furniture, pond and 2 sheds, greenhouse.

Good sized driveway to the front offering off street parking for multiple vehicles, double garage with electric door, range of wall and floor units for extra storage, plumbing for washing machine and wall mounted central heating boiler.

**Entrance lobby**

**Cloaks/wc**

**Lounge/diner**

20'5 x 11'9

**Sun room**

21'0 x 11'10

**Kitchen**

11'6 x 8'6

**Inner Hallway**

**Bedroom 1**

13'8 x 11'0

**En-suite**

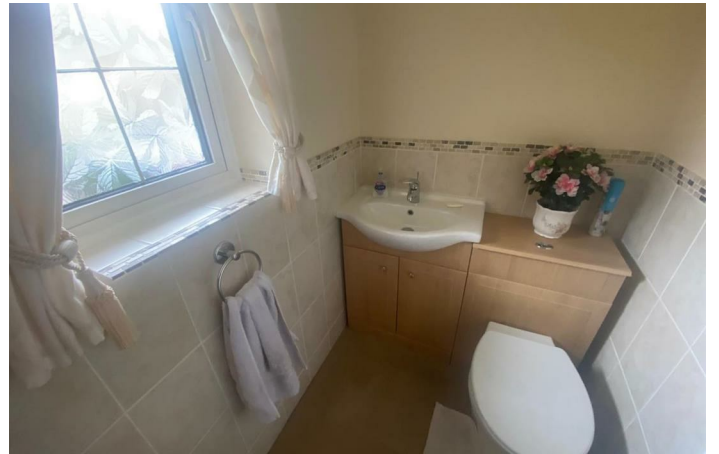
**Bedroom 2**

11'6 x 10'1

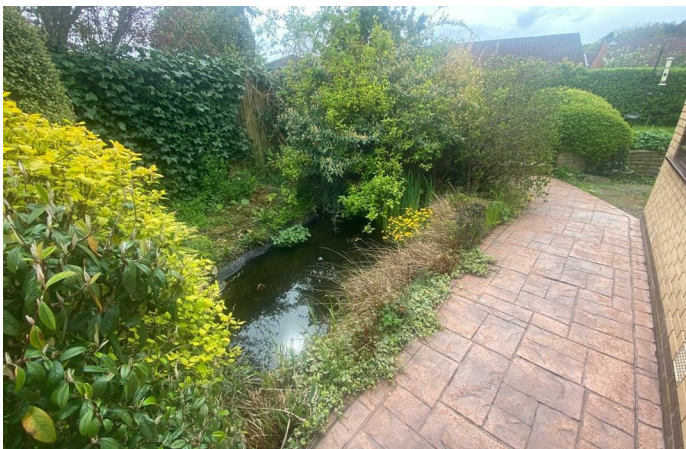
**Bedroom 3**

10'11 x 7'5

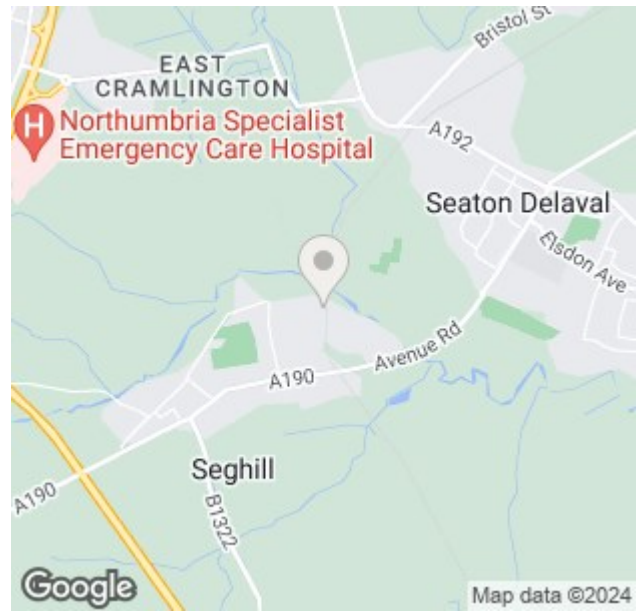
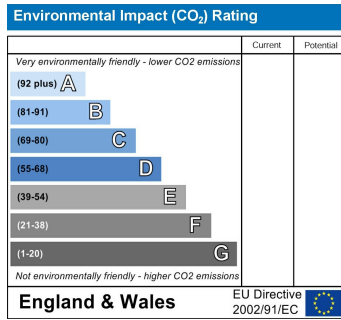
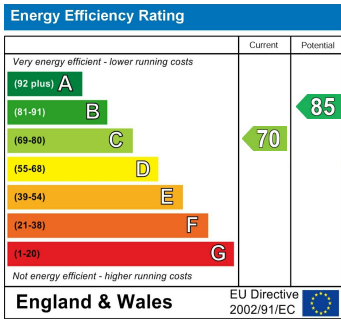
**Bathroom/WC**







**Local Authority** Northumberland County Council  
**Council Tax Band** D  
**EPC Rating** C  
**Tenure** Freehold



**ML Estates Sales Office**

27 Avenue Road, Seaton Delaval, Tyne  
 And Wear, NE25 0DT

**Contact**

0191 237 60 60  
 sd@mlestates.co.uk  
 www.mlestates.co.uk/

Agents Note: Whilst every care has been taken to prepare these particulars, they are for guidance purposes only. All measurements are approximate and for general guidance purposes only and whilst every care has been taken to ensure accuracy, they should not be relied upon and potential buyers/tenants are advised to recheck the measurements.