

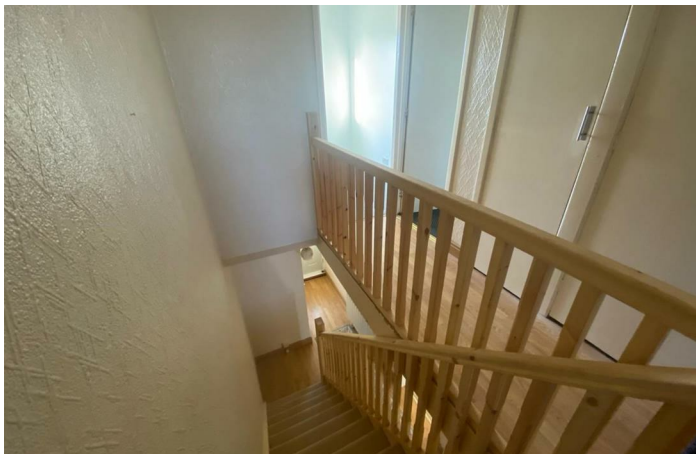


12 Willow Close Hadston NE65 9TD

- Spacious Mid link
 - Popular area
 - Fitted Kitchen
- Lounge through dining room
- Cost effective solar panels
- No upper chain
- Three good size bedrooms
- Bathroom with corner bath
 - Good storage
 - Electric heating

Offers Over £95,000





*****BARGAIN BUY*****

Fantastic opportunity to purchase this spacious three bedroom home, with nice outlook to the front.

Situated in a popular location with all local amenities at hand and also on the coastal road to Amble and further coastal Towns. Druridge Bay Country Park and beach within walking distance.

Approached from the rear leads into Kitchen with built in oven and hob, Hallway with understair storage and front UPVC double glazed door, ground floor WC, 26' Lounge with feature fireplace and Bay window to the front, ample space for Dining room table and chairs and French doors leading out to the yard.

To the first floor are Three good sized bedrooms, two have fitted wardrobes, Bathroom with three piece suite comprising corner bath with shower over, pedestal wash hand basin and WC, two large storage cupboards to the landing.

To the rear is a yard with brick build shed with power and light and open, pedestrianised area to the front.

Electric heating with solar panels (which are owned) to the roof makes the house energy efficient, UPVC double glazing, No upper chain, Viewing strongly recommended.

Rear Entrance

Kitchen

8'6 x 11'0

Hallway

Lounge/Dining room

26' x 11'2

Ground floor Wc

Stairs to the first floor

Bathroom

Bedroom 1

12'3 x 10'4

To the rear

Bedroom 2

10'8 x 9'13

To the front

Bedroom 3

8'1 x 8'1

To the front

Rear yard

Disclaimer

DISCLAIMER:

ML Estates Ltd endeavour to maintain accurate descriptions of properties in Virtual Tours, Brochures, Floor Plans and descriptions, however, these are intended only as a guide and purchasers must satisfy themselves by personal inspection.

All rooms have been measured with electronic laser and are approximate measurements only. None of the services to the above property have been tested by ourselves, and we cannot guarantee that the installations described in the details are in perfect working order.

ML Estates for themselves, the vendors or lessors, produce these brochures in good faith and are a guideline only. They do not constitute any part of a contract and are correct to the best of our knowledge at the time of going to press. Pictures may appear distorted due to enlargement and are not to be used to give an accurate reflection of size. All negotiations and payments are subject to contract.

The Tenure of the property should be clarified by your legal representative prior to exchange of contracts.

Viewing arrangements

OFFICE HOURS:

Monday - Friday 9:00am - 5:00pm

Saturday 9:00am - 2:00pm

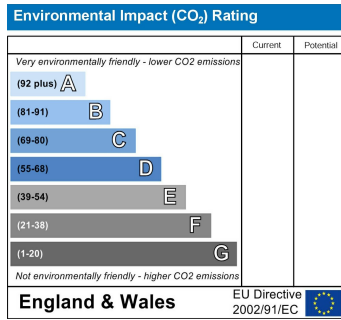
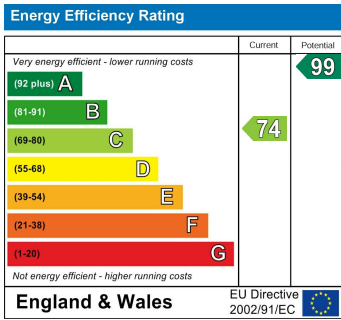
We are contactable after hours on our social media pages and via email sd@mlestates.co.uk

VIEWING: Viewing is strictly by appointment through: - ML Estates, 27 Avenue Road, Seaton Delaval, Tyne & Wear, NE25 0DT





Local Authority Northumberland County Council
Council Tax Band A
EPC Rating TBCC
Tenure Freehold



ML Estates Sales Office

27 Avenue Road, Seaton Delaval, Tyne
 And Wear, NE25 0DT

Contact

0191 237 60 60
 sd@mlestates.co.uk
 www.mlestates.co.uk/

Agents Note: Whilst every care has been taken to prepare these particulars, they are for guidance purposes only. All measurements are approximate and for general guidance purposes only and whilst every care has been taken to ensure accuracy, they should not be relied upon and potential buyers/tenants are advised to recheck the measurements.