



1 Greenlands Court

Seaton Delaval, Whitley Bay NE25 0BU

- Corner sited semi-detached bungalow
 - Extremely well presented
 - 15Ft Lounge
 - 2 Bedrooms (both with fitted robes)
 - Conservatory
- Fabulous position
- Immaculate throughout
- Spacious Dining Kitchen
 - Wet Room/Wc
 - Utility room/Garage

£290,000





Superbly positioned, immaculate semi-detached bungalow which is well worthy of internal inspection to fully appreciate the accommodation on offer.



The property is corner sited with gardens to the front, side and rear. Briefly comprising entrance lobby, spacious reception hallway, living room, dining kitchen with ample space for table and chairs, fitted Welsh dresser and a good range of wall and floor units with contrasting work surfaces, integral dishwasher. Conservatory leading to lovely garden, two bedrooms both with fitted wardrobes. Refitted wet room with walk in shower, vanity wash hand basin and low level w.c. Utility room (converted part of garage), door to remainder of garage with electric door. Externally there is a driveway to garage providing off street parking, well tended gardens to the side and rear with Yorkshire paving, lawn and borders. There is Upvc double glazing and gas central heating.



Entrance Lobby

Reception Hallway

Lounge

15'4 x 10'5

Dining Kitchen

20'4 x 9'7

Conservatory

8'2 x 9'2

Bedroom 1

14'3 x 10'5

Bedroom 2

11'6 x 8'5

Wet Room/WC

8'9 x 5'5

Disclaimer

DISCLAIMER:

ML Estates Ltd endeavour to maintain accurate descriptions of properties in Virtual Tours, Brochures, Floor Plans and descriptions, however, these are intended only as a guide and purchasers must satisfy themselves by personal inspection.

All rooms have been measured with electronic laser and are approximate measurements only. None of the services to the above property have been tested by ourselves, and we cannot guarantee that the installations described in the details are in perfect working order.

ML Estates for themselves, the vendors or lessors, produce these brochures in good faith and are a guideline only. They do not constitute any part of a contract and are correct to the best of our knowledge at the time of going to press. Pictures may appear distorted due to enlargement and are not to be used to give an accurate reflection of size. All negotiations and payments are subject to contract.

The Tenure of the property should be clarified by your legal representative prior to exchange of contracts.

Viewings

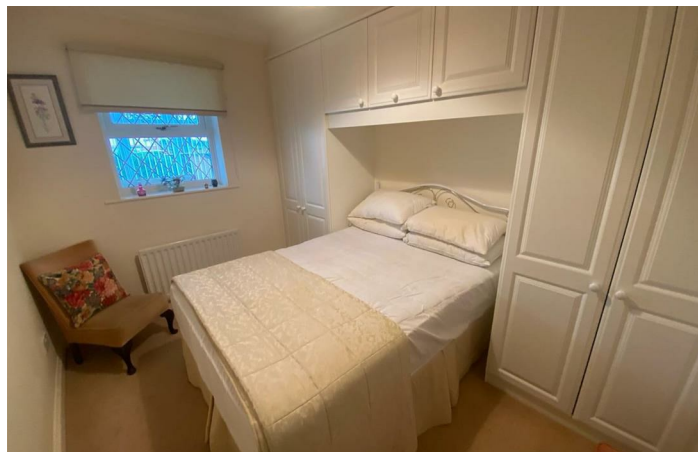
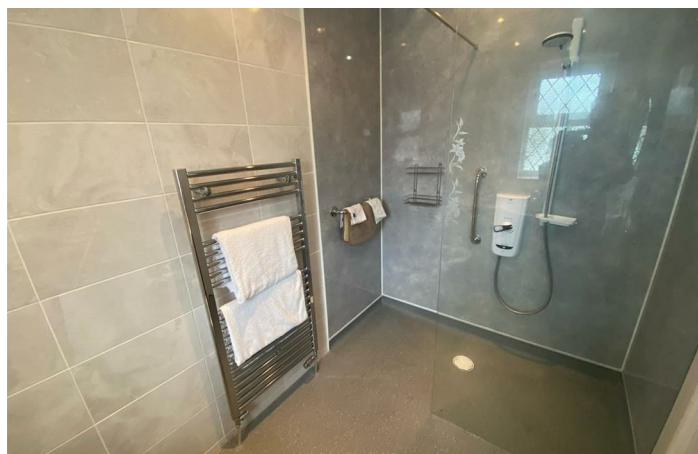
OFFICE HOURS:

Monday - Friday 9:00am - 5:00pm

Saturday 9:00am - 2:00pm

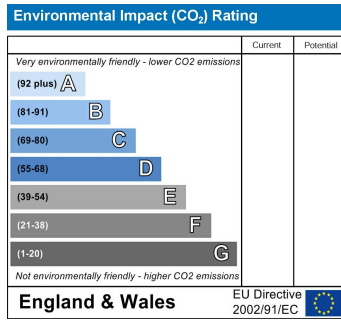
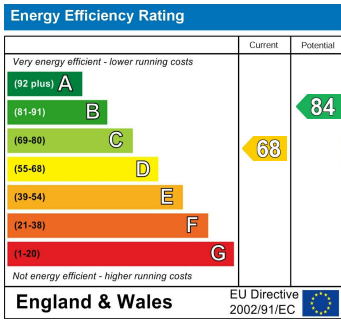
We are contactable after hours on our social media pages and via email sd@mlestates.co.uk

VIEWING: Viewing is strictly by appointment through: - ML Estates, 27 Avenue Road, Seaton Delaval, Tyne & Wear, NE25 0DT





Local Authority
Council Tax Band
EPC Rating D
Tenure Freehold



ML Estates Sales Office

27 Avenue Road, Seaton Delaval, Tyne
 And Wear, NE25 0DT

Contact

0191 237 60 60
 sd@mlestates.co.uk
 www.mlestates.co.uk/

Agents Note: Whilst every care has been taken to prepare these particulars, they are for guidance purposes only. All measurements are approximate and for general guidance purposes only and whilst every care has been taken to ensure accuracy, they should not be relied upon and potential buyers/tenants are advised to recheck the measurements.