



8 Hartley Gardens , Seaton Delaval NE25 0AB

- Outstanding Semi-Detached Home
 - Must be viewed
 - Two Reception rooms
 - Sun room with Bi fold doors
 - Superb Bathroom/Separate WC
- Immaculately presented
 - Pedestrianised Street
 - Luxury Kitchen with appliances
 - 3 Bedrooms
 - Driveway, Garage and Gardens

Offers Over £300,000





An amazing opportunity to purchase this delightful, substantial and spacious semi-detached home, offering excellent family sized accommodation.

Internal viewing is essential to fully appreciate what this property has to offer, retaining many original features, and situated in a quiet pedestrianised street to the front, close to all local amenities, shops, schools, doctors etc

Briefly comprising: Entrance lobby with original stained glass windows, inner door to a lovely welcoming reception hallway with lovely staircase to the first floor. Two reception rooms with coving, ceiling rose and feature fire surround to the rear, modern refitted Kitchen with centre island housing stainless steel sink unit and integrated dishwasher, contrasting work surfaces with integrated fridge, freezer, electric hob and oven and microwave, square arch to Sun room creating extra living space with bifold doors opening out to the side garden, Utility room incorporating ground floor WC and wash hand basin.

To the First floor there are 3 well proportioned bedrooms, master with fitted sliding door wardrobes, re-fitted bathroom with White suite of modern bath, separate walk in shower enclosure with mains shower, double vanity sink unit, separate WC.

Externally there is a large private fenced garden mainly laid to lawn, South facing private side garden area and to the rear is a yard with Resin driveway offering off street parking, single brick garage. Also benefiting from Gas central heating and UPVC double glazing throughout.

Entrance lobby

Reception Hallway

Lounge

17'4 x 14'7

Dining Room/2nd Reception

13'7 x 12'7

Kitchen

11'9 x 10'8

Utility Room

7'5 x 3'7

Sun Room

11'3 x 10'3

First floor landing

Bedroom 1

10'5 exclud robes x 15'1

Bedroom 2

12'7 x 13'6

Bedroom 3

9'9 x 8'0

Bathroom

Separate WC

DISCLAIMER:

ML Estates Ltd endeavour to maintain accurate descriptions of properties in Virtual Tours, Brochures, Floor Plans and descriptions, however, these are intended only as a guide and purchasers must satisfy themselves by personal inspection.

All rooms have been measured with electronic laser and are approximate measurements only. None of the services to the above property have been tested by ourselves, and we cannot guarantee that the installations described in the details are in perfect working order.

ML Estates for themselves, the vendors or lessors, produce these brochures in good faith and are a guideline only. They do not constitute any part of a contract and are correct to the best of our knowledge at the time of going to press. Pictures may appear distorted due to enlargement and are not to be used to give an accurate reflection of size. All negotiations and payments are subject to contract.

The Tenure of the property should be clarified by your legal representative prior to exchange of contracts.

Viewing arrangements

OFFICE HOURS:

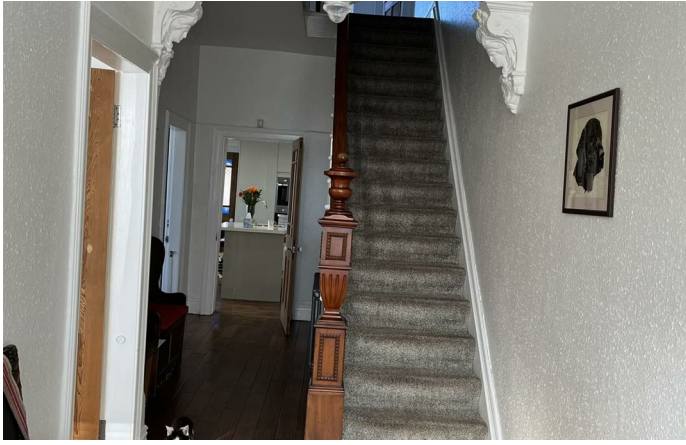
Monday - Friday 9:00am - 5:00pm

Saturday 9:00am - 2:00pm

We are contactable after hours on our social media pages and via email sd@mlestates.co.uk

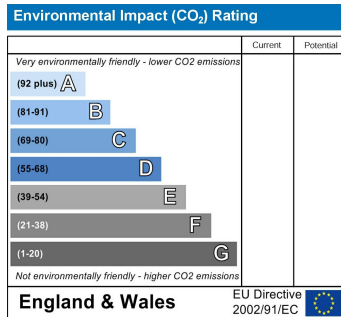
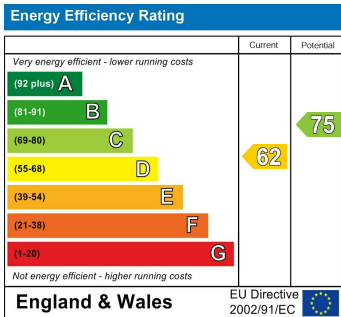
VIEWING: Viewing is strictly by appointment through: - ML Estates, 27 Avenue Road, Seaton Delaval, Tyne & Wear, NE25 0DT







Local Authority
Council Tax Band
EPC Rating D
Tenure Freehold



ML Estates Sales Office

27 Avenue Road, Seaton Delaval, Tyne
 And Wear, NE25 0DT

Contact

0191 237 60 60
 sd@mlestates.co.uk
 www.mlestates.co.uk/

Agents Note: Whilst every care has been taken to prepare these particulars, they are for guidance purposes only. All measurements are approximate and for general guidance purposes only and whilst every care has been taken to ensure accuracy, they should not be relied upon and potential buyers/tenants are advised to recheck the measurements.