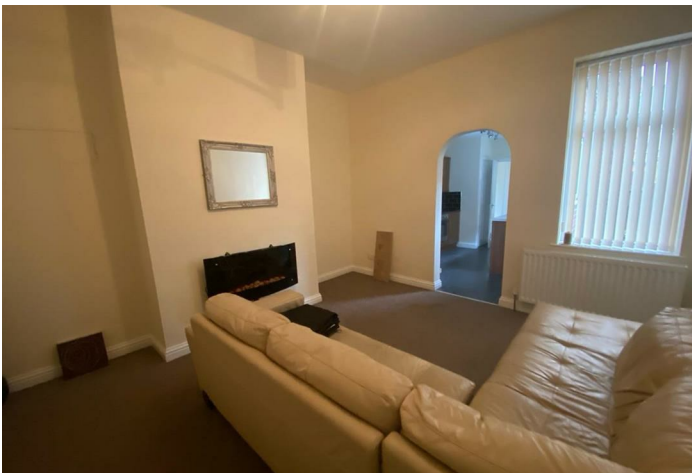




57 Blyth Street
, Seaton Delaval NE25 0DY

- Ground Floor Flat
- Fitted Kitchen
- Bathroom/W.C.
- Viewing Essential
- Gas Central Heating
- Lounge
- Two Bedrooms
- Good First Time Buy
- Private Rear Yard
- UPVC Double Glazing

£79,950





A Two bedroom ground floor flat situated in the heart of Seaton Delaval. The property has recently been maintained to a good standard. Briefly comprising entrance hall, lounge, Fitted kitchen, Bathroom, 2 bedrooms & a PRIVATE yard.



ENTRANCE

LOUNGE

14'8" x 11'4

KITCHEN

12'5" x 7'11

BEDROOM ONE

14'3" x 11'5

Feature fireplace, window

BEDROOM TWO

11'3" x 7'5

BATHROOM

EXTERNALLY

Rear Yard

Disclaimer

DISCLAIMER:

ML Estates Ltd endeavour to maintain accurate descriptions of properties in Virtual Tours, Brochures, Floor Plans and descriptions, however, these are intended only as a guide and purchasers must satisfy themselves by personal inspection.

All rooms have been measured with electronic laser and are approximate measurements only. None of the services to the above property have been tested by ourselves, and we cannot guarantee that the installations described in the details are in perfect working order.

ML Estates for themselves, the vendors or lessors, produce these brochures in good faith and are a guideline only. They do not constitute any part of a contract and are correct to the best of our knowledge at the time of going to press. Pictures may appear distorted due to enlargement and are not to be used to give an accurate reflection of size. All negotiations and payments are subject to contract.

The Tenure of the property should be clarified by your legal representative prior to exchange of contracts.

Viewing Arrangements - Sales

OFFICE HOURS:

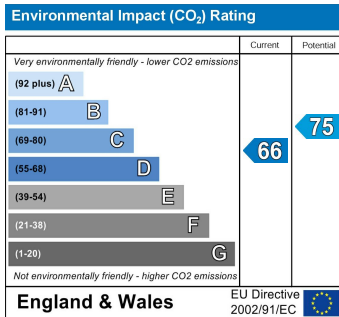
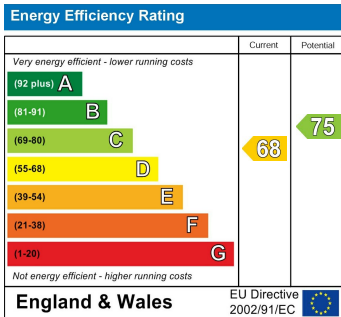
Monday - Friday 9:00am - 5:00pm

Saturday 9:00am - 2:00pm

We are contactable after hours on our social media pages and via email sd@mlestates.co.uk

VIEWING: Viewing is strictly by appointment through: - ML Estates, 27 Avenue Road, Seaton Delaval, Tyne & Wear, NE25 0DT

Local Authority Northumberland County Council
Council Tax Band A
EPC Rating D
Tenure Leasehold



ML Estates Sales Office

27 Avenue Road, Seaton Delaval, Tyne
 And Wear, NE25 0DT

Contact

0191 237 60 60
 sd@mlestates.co.uk
 www.mlestates.co.uk/

Agents Note: Whilst every care has been taken to prepare these particulars, they are for guidance purposes only. All measurements are approximate and for general guidance purposes only and whilst every care has been taken to ensure accuracy, they should not be relied upon and potential buyers/tenants are advised to recheck the measurements.