



House - Terraced (EPC Rating:)

NOSS MAYO

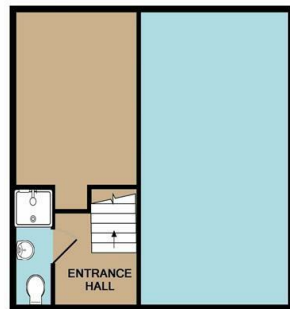
PCM

£895 PCM

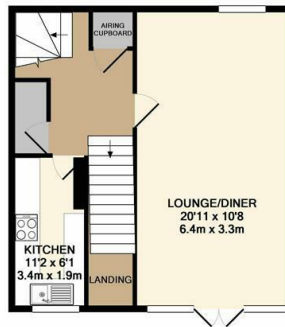


3 Bedroom House - Terraced located in

**** BEAUTIFUL VILLAGE LOCATION**** | FANTASTIC views of the ESTUARY in Noss Mayo | FURNISHED | Separate fully fitted kitchen | WELL MAINTAINED communal gardens | E7 Heating | EPC Rating - E.



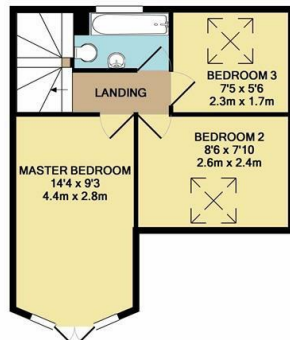
GROUND FLOOR
APPROX. FLOOR
AREA 444 SQ.FT.
(41.2 SQ.M.)



1ST FLOOR
APPROX. FLOOR
AREA 442 SQ.FT.
(41.0 SQ.M.)

TOTAL APPROX. FLOOR AREA 1271 SQ.FT. (118.1 SQ.M.)

Whilst every attempt has been made to ensure the accuracy of the floor plan contained here, measurements of doors, windows, rooms and any other items are approximate and no responsibility is taken for any error, omission, or mis-statement. This plan is for illustrative purposes only and should be used as such by any prospective purchaser. The services, systems and appliances shown have not been tested and no guarantee as to their operability or efficiency can be given.
Made with Metropix (2019)



2ND FLOOR
APPROX. FLOOR
AREA 385 SQ.FT.
(35.8 SQ.M.)

Council Tax Band

Energy Performance Graph

Energy Efficiency Rating		Current	Potential
Very energy efficient - lower running costs			
(92 plus) A			
(81-91) B			
(69-80) C			
(55-68) D			
(39-54) E			
(21-38) F			
(1-20) G			
Not energy efficient - higher running costs			
England & Wales	EU Directive 2002/91/EC		

Call us on

01752 201010

enquiries@langtownandcountry.com

www.langtownandcountry.com

Agents Note: Whilst every care has been taken to prepare these particulars, they are for guidance purposes only. All measurements are approximate and are for general guidance purposes only and whilst every care has been taken to ensure their accuracy, they should not be relied upon and potential buyers are advised to recheck the measurements.