



House - Detached (EPC Rating:)

WARREN PARK, PLYMOUTH

£1,600

3 Bedroom House - Detached located in Plymouth

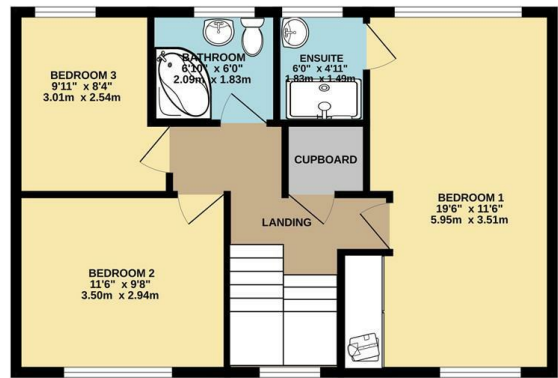
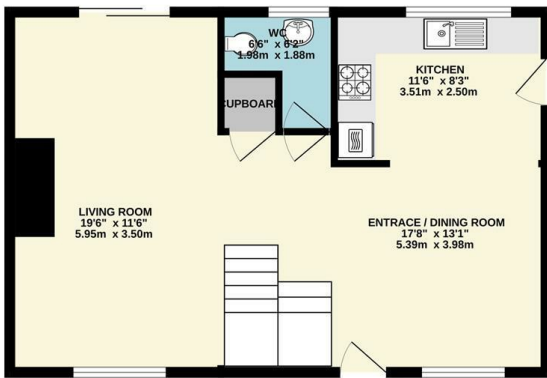
A beautifully presented three bedroom family home situated in the North of Plymouth.

In the popular residential area of Woolwell, this detached house is set back from the road, with a large driveway leading to the property. Inside the home, the impressive open plan layout is perfect for modern family living. With a fitted kitchen, dining area, large living room and downstairs WC, the ground floor is a perfect space for cosy evenings, or entertaining friends and family. The oak staircase leads to the first floor, with two bedrooms on the left hand side, a family bathroom off of the hall and the master bedroom and en-suite shower room to the right.

Externally the property benefits from a wrap around garden, partially laid to lawn and with a covered, decked area. A door leads to the garage. The front drive has space for up to 6 cars.

This property is unfurnished and is managed by the Landlord.

If you wish to apply for this property, please go to our website, lettings, tenants process, read the lettings procedure, download, fill in and return an application form to us. If you do not hear back within 48 hours, please take this as you have unfortunately not been successful.



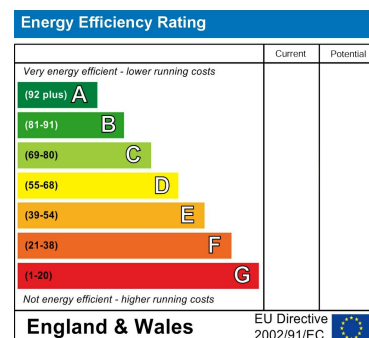
TOTAL FLOOR AREA: 1139 sq.ft. (105.8 sq.m.) approx.

Whilst every attempt has been made to ensure the accuracy of the floorplan contained here, measurements of doors, windows, rooms and any other items are approximate and no responsibility is taken for any error, omission or mis-statement. This plan is for illustrative purposes only and should be used as such by any prospective purchaser. The services, systems and appliances shown have not been tested and no guarantee as to their operability or efficiency can be given.
Made with Metropix ©2024



Council Tax Band

Energy Performance Graph



Call us on

01752 201010

enquiries@langtownandcountry.com

www.langtownandcountry.com

Agents Note: Whilst every care has been taken to prepare these particulars, they are for guidance purposes only. All measurements are approximate and are for general guidance purposes only and whilst every care has been taken to ensure their accuracy, they should not be relied upon and potential buyers are advised to recheck the measurements.