



01452 690553



sales@applebys.estate



www.applebysestateagents.co.uk



4 Park View, Ruardean, GL17 9YW

£315,000

This three-bedroom detached bungalow waiting for the right owner to unlock its full potential, you can truly make this bungalow your own by adding your personal touch.

Don't miss out on this fantastic opportunity to own a home in a village location***CHAIN FREE***

Entrance Hall

Sitting Room 14'7 x 11'1 (4.45m x 3.38m)

Kitchen 11'2 x 8'8 (3.40m x 2.64m)

Bedroom 1 13'7 x 11'1 (4.14m x 3.38m)

Bedroom 2 14'5 x 9'11 (4.39m x 3.02m)

Side Porch 14'5 x 5'7 (4.39m x 1.70m)

Bedroom 3 9'11 x 9'11 (3.02m x 3.02m)

Store Room/Study 7'10 x 7'7 (2.39m x 2.31m)

Shower Room

OUTSIDE

Situated in a Cul-De-Sac driveway leading to the garage and front lawned garden.

The rear garden is all enclosed mainly laid to lawn and various shrubs planted.

Services

Mains drainage, Oil

Forest Of Dean District Council tax band C

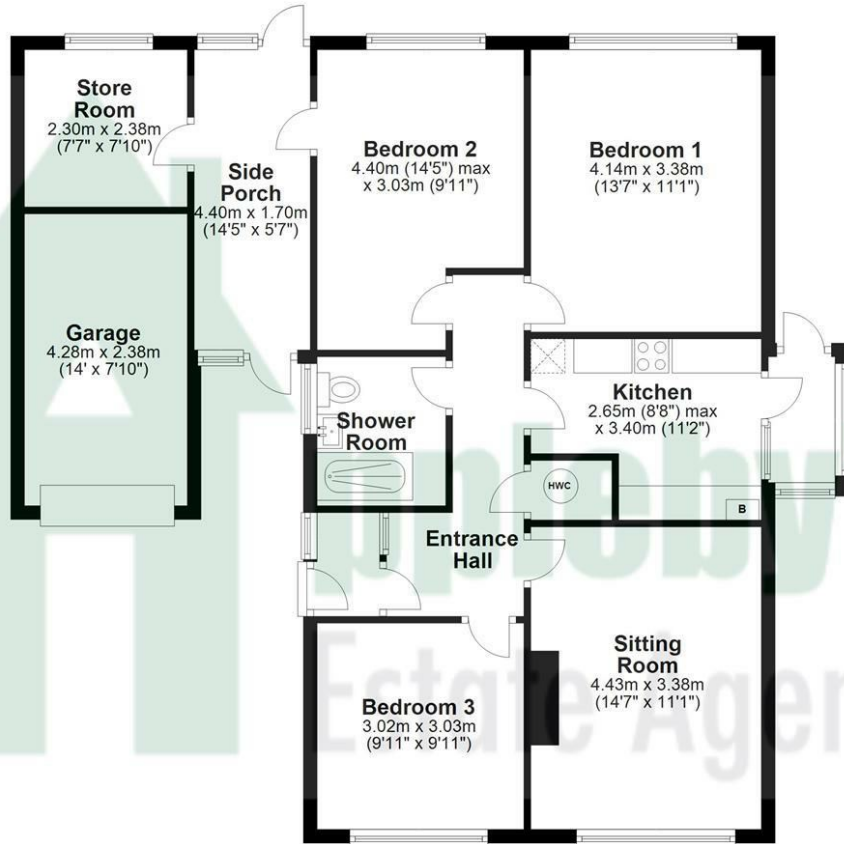
Tenure

Freehold

Floor Plan

Ground Floor

Approx. 90.0 sq. metres (968.7 sq. feet)



Total area: approx. 90.0 sq. metres (968.7 sq. feet)

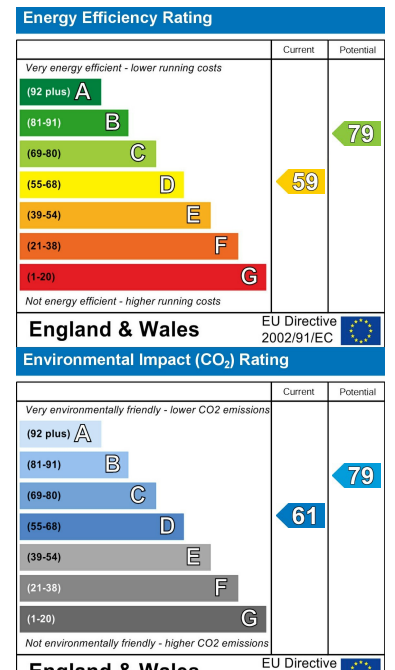
Please note this floor plan is for marketing purposes and is to be used as a guide only. All efforts have been made to ensure its accuracy. Plan produced using PlanUp.

4 Park View, RUARDEAN

Area Map



Energy Efficiency Graph



These particulars, whilst believed to be accurate are set out as a general outline only for guidance and do not constitute any part of an offer or contract. Intending purchasers should not rely on them as statements of representation of fact, but must satisfy themselves by inspection or otherwise as to their accuracy. No person in this firm's employment has the authority to make or give any representation or warranty in respect of the property.