



01452 690553



sales@applebys.estate



www.applebysestateagents.co.uk



3 Vervain Close, Churchdown, GL3 1LT

£265,000

This Three bedroom townhouse that offers versatile living split over three floors, with the option of having a fourth bedroom if required perfect for a growing family or those in need of extra space.

Situated in the popular Churchdown village, this property is positioned perfectly for close access to schools, local shops, newly installed cycle path, bus routes, and the M5.

Entrance Hall

Kitchen/Breakfast Room 16'4 x 8'5 (4.98m x 2.57m)

Dining Room/Study 14'8 x 8'8 (4.47m x 2.64m)

WC

Lounge 16'0 x 14'8 (4.88m x 4.47m)

Bedroom 1 14'8 x 12'1 (4.47m x 3.68m)

Bedroom 2 11'5 x 8'10 (3.48m x 2.69m)

Bedroom 3 9'0 x 8'7 (2.74m x 2.62m)

Bathroom

OUTSIDE

Driveway to the front of the property

The rear garden is all enclosed mainly laid to lawn, patio and garden shed.

Services

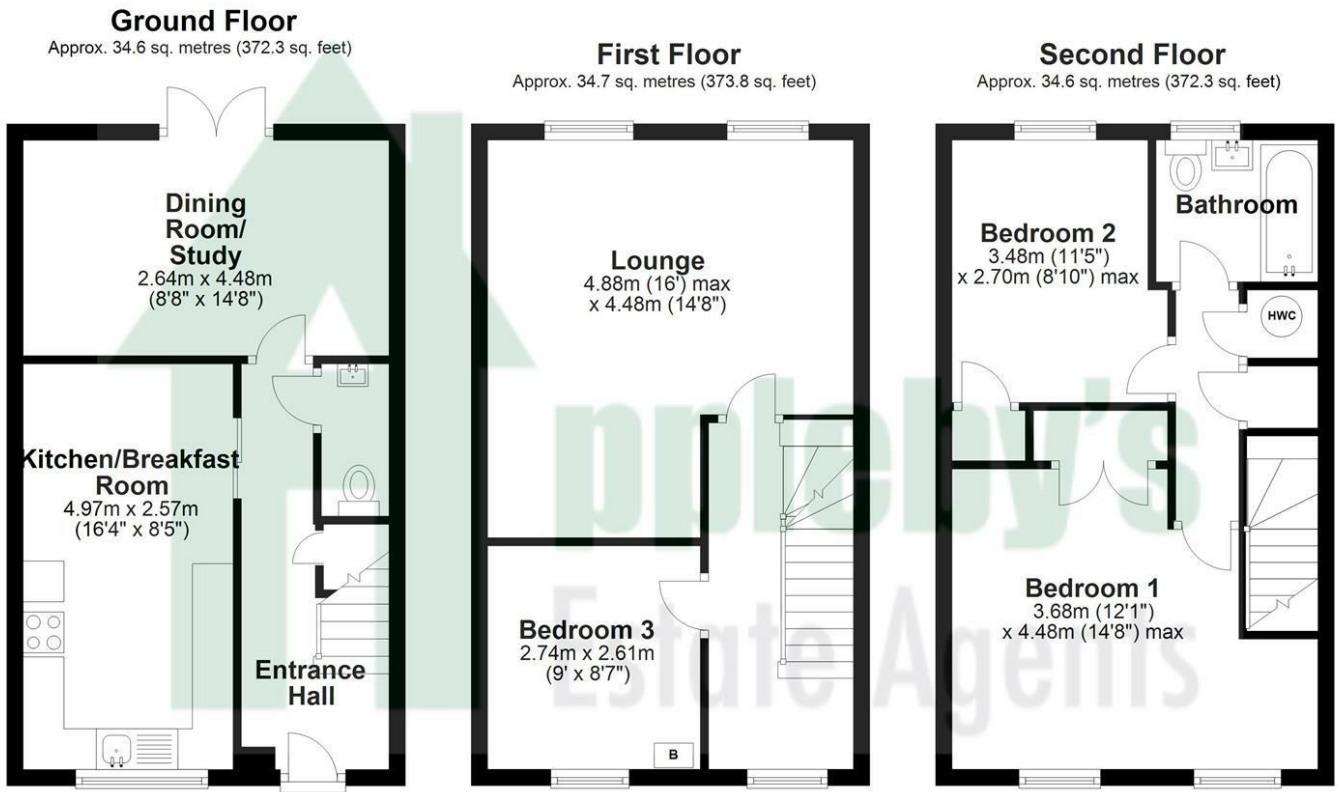
Mains drainage, Gas central heating

Tewkesbury Borough Council tax band C

Tenure

Freehold

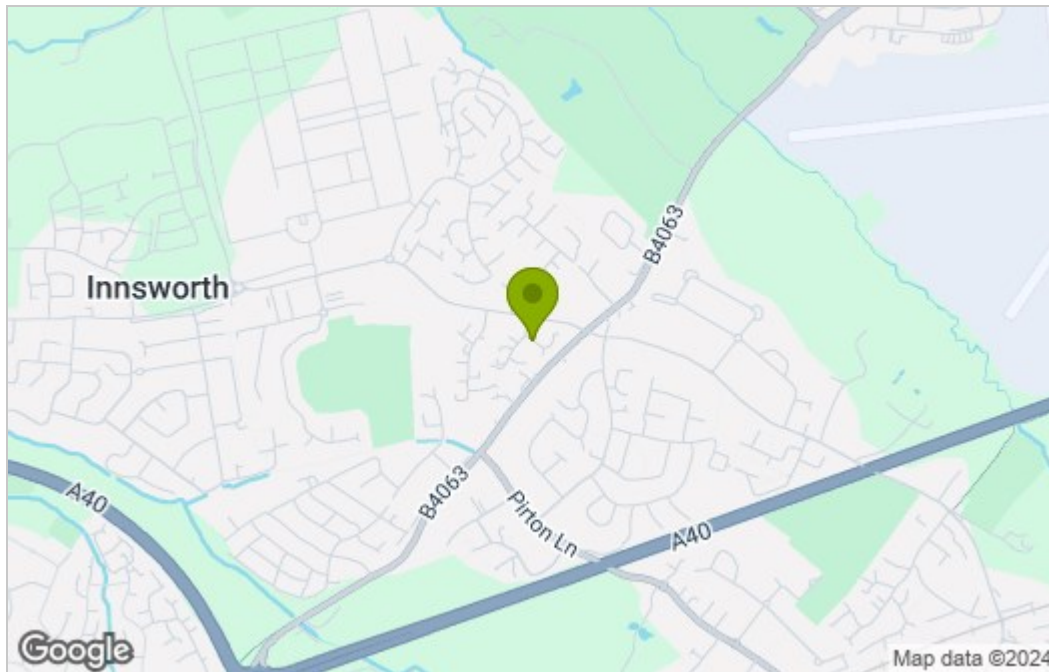
Floor Plan



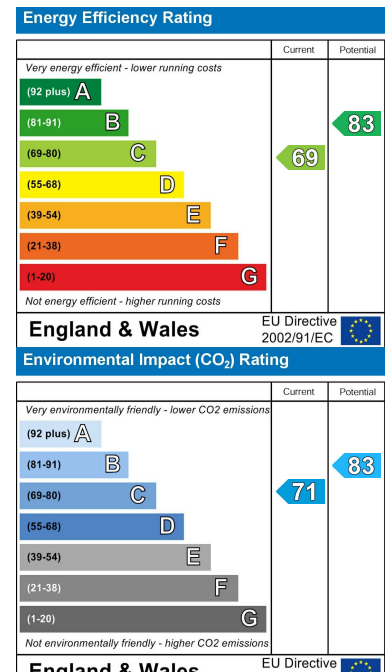
Total area: approx. 103.9 sq. metres (1118.5 sq. feet)

Please note this floor plan is for marketing purposes and is to be used as a guide only. All efforts have been made to ensure its accuracy.
Plan produced using PlanUp.

Area Map



Energy Efficiency Graph



These particulars, whilst believed to be accurate are set out as a general outline only for guidance and do not constitute any part of an offer or contract. Intending purchasers should not rely on them as statements of representation of fact, but must satisfy themselves by inspection or otherwise as to their accuracy. No person in this firm's employment has the authority to make or give any representation or warranty in respect of the property.