



01452 690553



sales@applebys.estate



www.applebysestateagents.co.uk



47 Tuffley Crescent, Gloucester, GL1 5ND

£315,000

This spacious 1930's bay fronted family home is ready for a growing family. Benefitting downstairs WC/UTILITY, OPEN PLAN kitchen/dining and OFF road parking

*****CHAIN FREE*****

Porch

Entrance Hall

Lounge 13'8 x 12'4 (4.17m x 3.76m)

Dining Room 13'0 x 10'6 (3.96m x 3.20m)

Kitchen 9'7 x 7'9 (2.92m x 2.36m)

Utility

Bedroom 1 13'8 x 12'4 (4.17m x 3.76m)

Bedroom 2 13'0 x 10'6 (3.96m x 3.20m)

Bedroom 3 9'7 x 7'9 (2.92m x 2.36m)

Bathroom

OUTSIDE

Resin bound driveway to the front of the property.

The enclosed rear garden is mainly laid to lawn with a large patio to the back of the house

Services

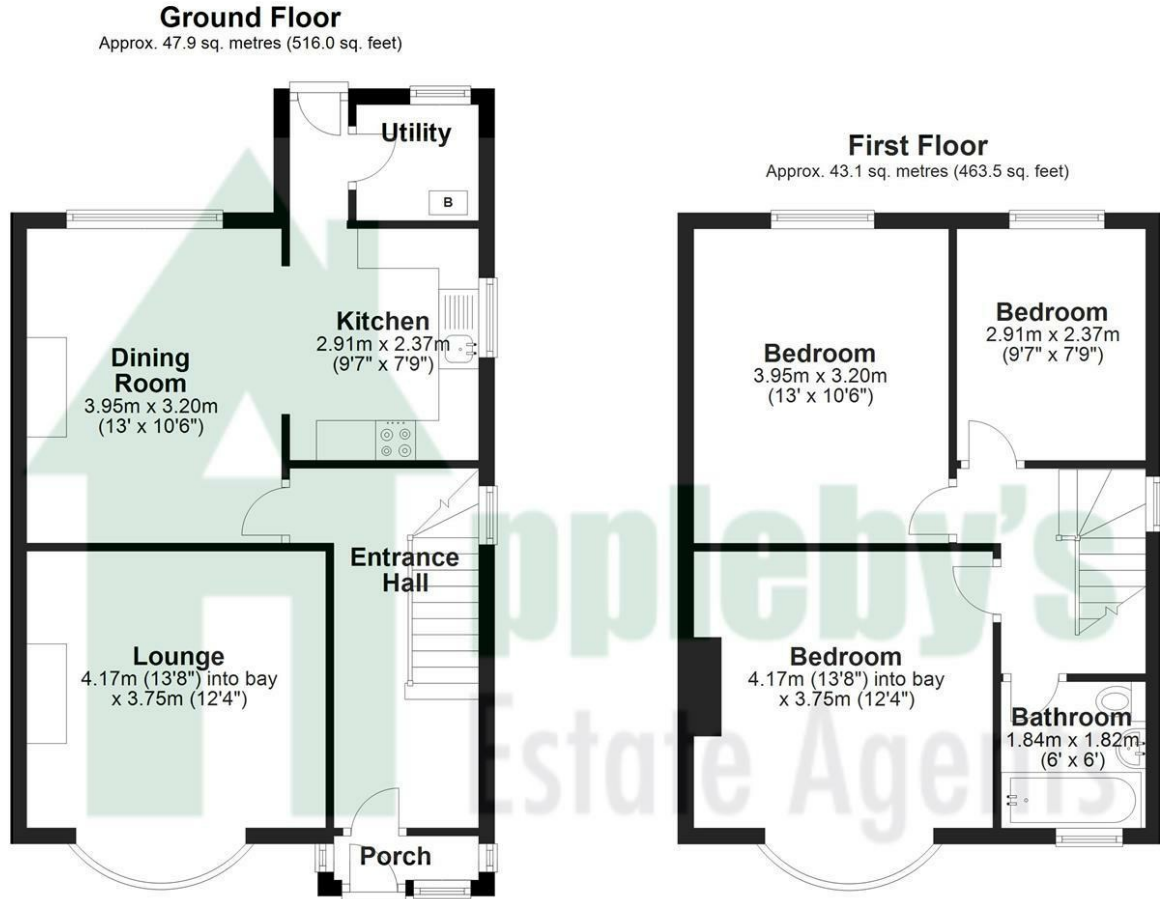
Mains drainage and gas central heating

Gloucester City Council tax band: C

Tenure

Freehold

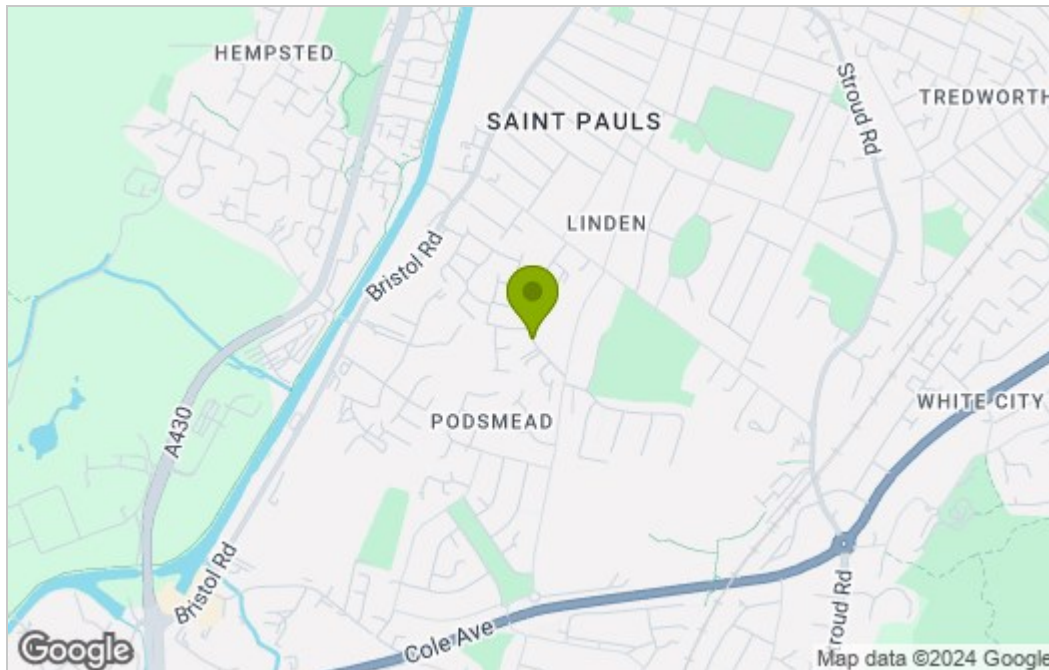
Floor Plan



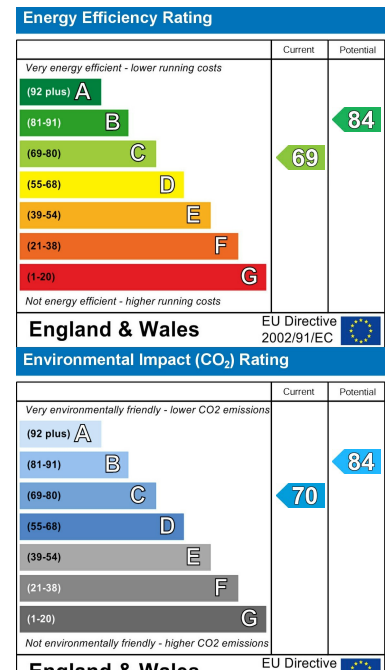
Total area: approx. 91.0 sq. metres (979.5 sq. feet)

Please note this floor plan is for marketing purposes and is to be used as a guide only. All efforts have been made to ensure its accuracy.
Plan produced using PlanUp.

Area Map



Energy Efficiency Graph



These particulars, whilst believed to be accurate are set out as a general outline only for guidance and do not constitute any part of an offer or contract. Intending purchasers should not rely on them as statements of representation of fact, but must satisfy themselves by inspection or otherwise as to their accuracy. No person in this firm's employment has the authority to make or give any representation or warranty in respect of the property.