



Millbrooke
ESTATE AGENTS

92B Leigh Road, Worsley
£175,000

92B Leigh Road

Worsley, Manchester

Millbrooke Estate Agents are delighted to offer for let this immaculate and contemporary apartment in the heart of Boothstown. The property has been renovated throughout to a high specification and is offered chain free!

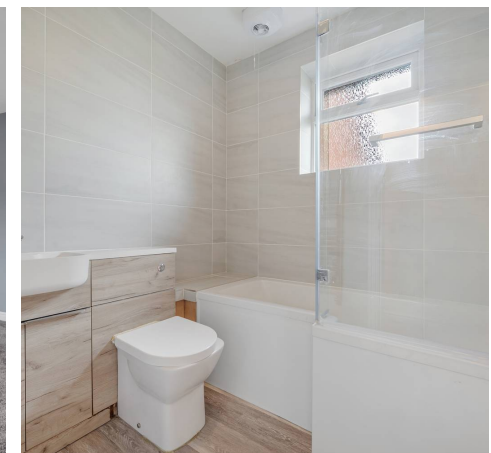
Council Tax band: B

Tenure: Leasehold

EPC Energy Efficiency Rating: C

EPC Environmental Impact Rating: D

- Shops and amenities nearby
- Excellent transport links
- Contemporary Interior
- Allocated parking space
- Two double bedrooms
- Gas central heating (combi boiler)
- Spacious lounge
- Well presented throughout
- First Floor Apartment
- No Onward Chain!



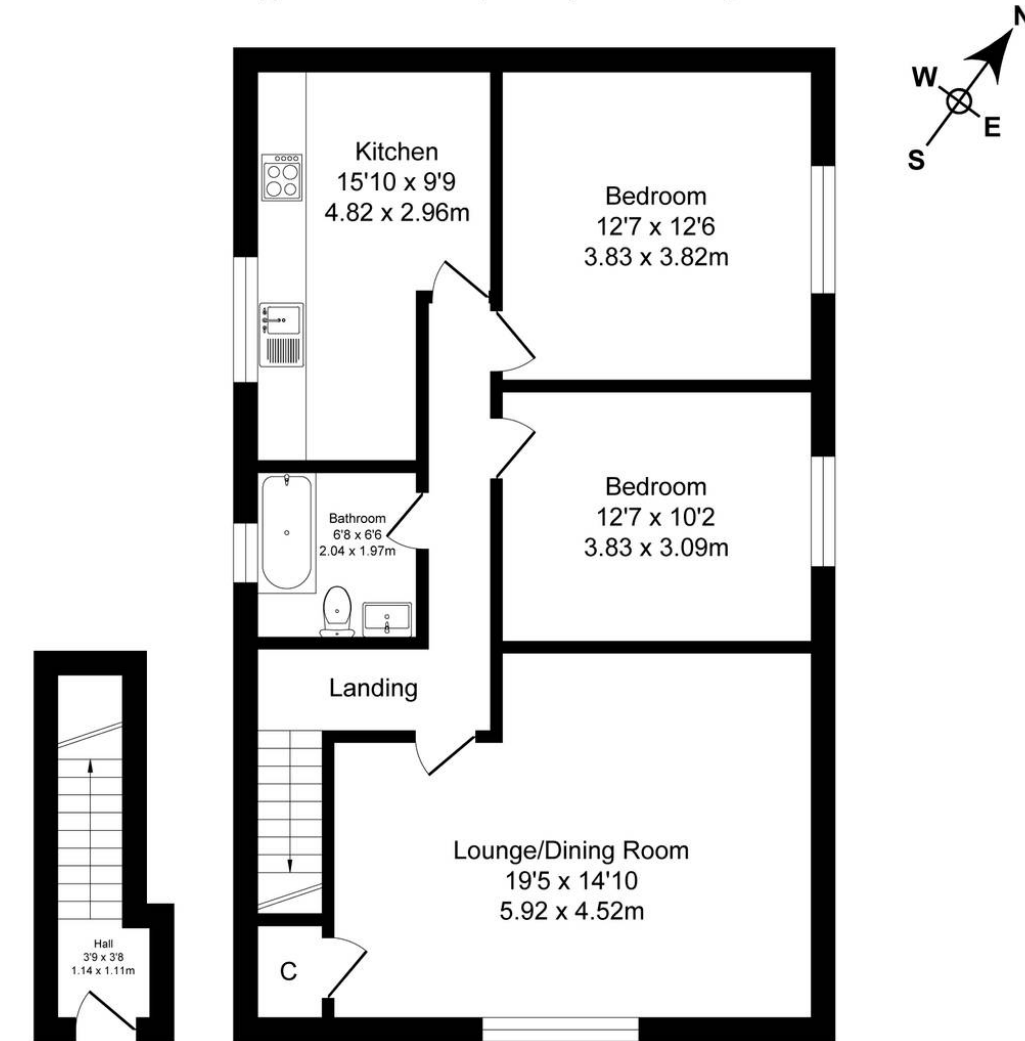




Leigh Road, Worsley

Total Approx. Floor Area 866 Sq.ft. (80.5 Sq.M.)

Surveyed and drawn by Lens Media for illustrative purposes only. Not to scale. Whilst every attempt was made to ensure the accuracy of the floor plan, all measurements are approximate and no responsibility is taken for any error.



Ground Floor

First Floor

Approx. Floor
Area 866 Sq.Ft
(80.5 Sq.M.)



Millbrooke Estate Agents

271 Mosley Common Road, Worsley, Manchester - M28 1BZ

0161 790 5154 • hello@millbrooke.co • millbrooke.co

