



Millbrooke
ESTATE AGENTS

41 Lambert Meadow, Tyldesley
£500,000

41 Lambert Meadow

Tyldesley, Manchester

Millbrooke Estate Agents are thrilled to offer for sale this executive 4-bedroom detached house, nestled in the prime location of the Bridgewater View Development.

Council Tax band: E

Tenure: Freehold

EPC Energy Efficiency Rating: B

EPC Environmental Impact Rating: B

- Four Double Bedrooms
- Ensuite to Master Bedroom
- Detached Double Garage
- Spacious Kitchen / Diner / Living
- Excellent Transport Links
- Shops and Amenities Nearby
- Presented to an Excellent Standard Throughout
- Freehold Property
- Cul-de-sac Location
- Large Gardens and Driveway with Electric Car Charge Point



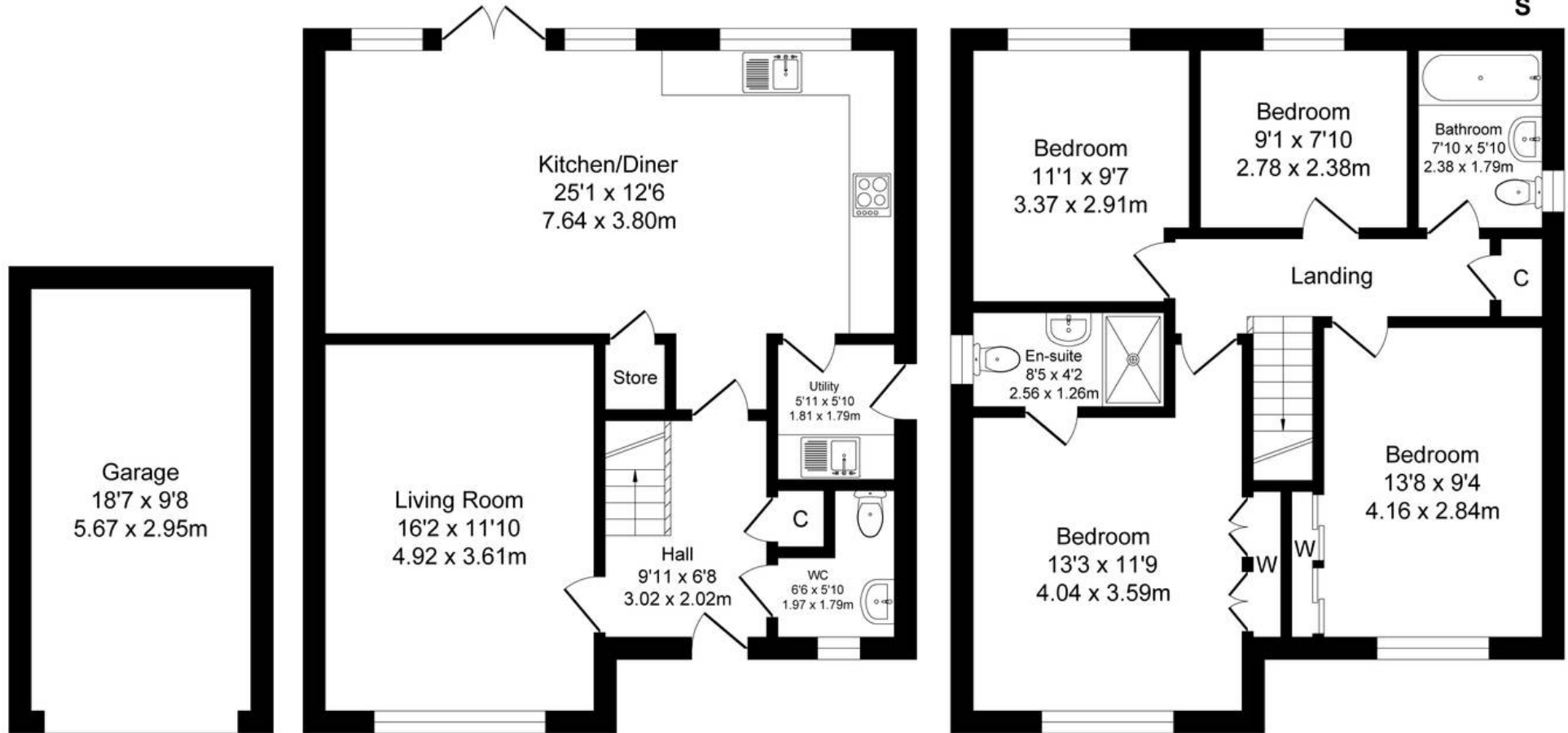
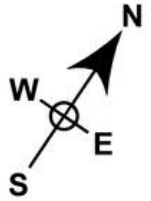




Lambert Meadow, Tyldesley

Total Approx. Floor Area 1552 Sq.ft. (144.1 Sq.M.)

Surveyed and drawn by Lens Media for illustrative purposes only. Not to scale. Whilst every attempt was made to ensure the accuracy of the floor plan, all measurements are approximate and no responsibility is taken for any error.



Garage

Approx. Floor Area 180 Sq.Ft (16.7 Sq.M.)

Ground Floor

Approx. Floor Area 686 Sq.Ft (63.7 Sq.M.)

First Floor

Approx. Floor Area 686 Sq.Ft (63.7 Sq.M.)



Millbrooke Estate Agents

271 Mosley Common Road, Worsley, Manchester - M28 1BZ

0161 790 5154 • hello@millbrooke.co • millbrooke.co

