



6 North Fold Close, Tyldesley
£425,000

6 North Fold Close

Tyldesley, Manchester

Millbrooke Estate Agents are delighted to offer for sale this executive three bedroom detached family home situated on the highly desirable Redrow development in Tyldesley. Sitting on the border of the increasingly popular Mosley Common area, this wonderful home is offered with the benefit of no onward chain!

Council Tax band: D

Tenure: Leasehold

EPC Energy Efficiency Rating: B

EPC Environmental Impact Rating: B

- Executive Family Home
- Stylish Kitchen / Diner
- Three Spacious Bedrooms
- Close to Public Transport Links
- En Suite to Master Bedroom
- Shops and Amenities Nearby
- South Facing Landscaped Garden
- No Onward Chain!
- Finished to a High Standard
- Cul-de-sac Location



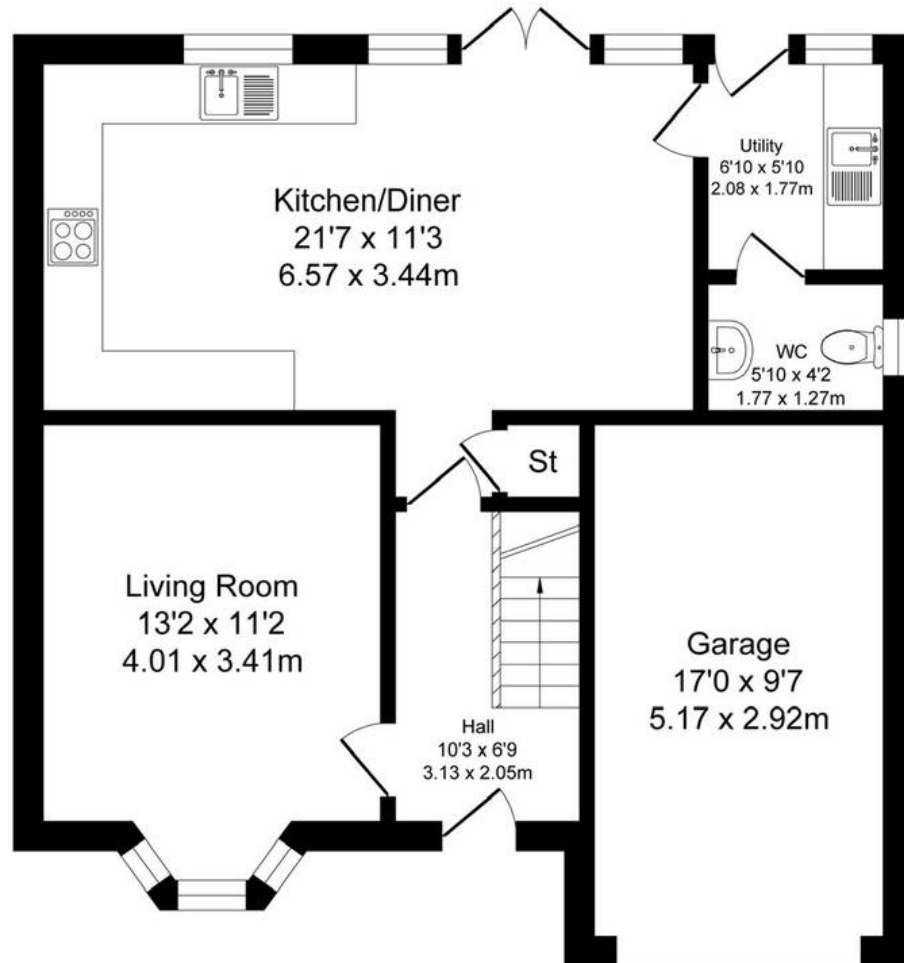




North Fold Close, Tyldesley

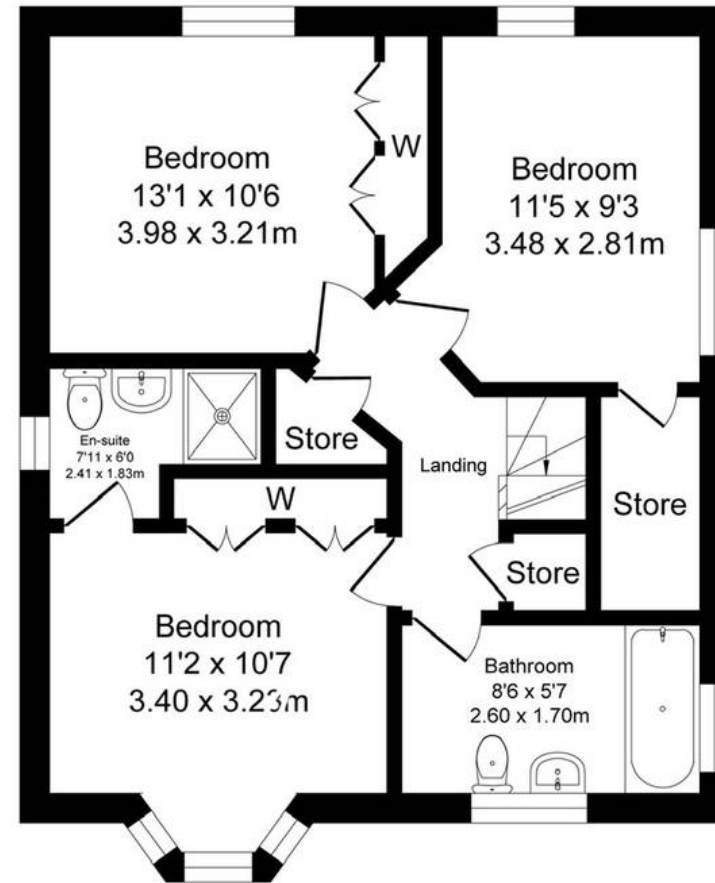
Total Approx. Floor Area 1293 Sq.ft. (120.1 Sq.M.)

Surveyed and drawn by Lens Media for illustrative purposes only. Not to scale. Whilst every attempt was made to ensure the accuracy of the floor plan, all measurements are approximate and no responsibility is taken for any error.



Ground Floor

Approx. Floor Area 744 Sq.Ft (69.1 Sq.M.)



First Floor

Approx. Floor Area 549 Sq.Ft (51.0 Sq.M.)





Millbrooke Estate Agents

271 Mosley Common Road, Worsley, Manchester - M28 1BZ

0161 790 5154 • hello@millbrooke.co • millbrooke.co

