



Millbrooke
ESTATE AGENTS

33 Garrett Meadow, Tyldesley
£350,000

33 Garrett Meadow

Tyldesley, Manchester

Millbrooke Estate Agents are delighted to offer for sale this beautifully presented three bedroom family. Offered for sale with no onward chain and ideally situated in the fabulous Bridgewater View development of Redrow Homes, within a popular and highly convenient setting. Council Tax band: D

Tenure: Freehold

EPC Energy Efficiency Rating: B

EPC Environmental Impact Rating: B

- Shops and amenities nearby
- Excellent transport links
- Private garden to the rear
- Turn key ready
- Three bedrooms and two bathrooms
- Single garage
- Double glazing throughout
- No onward chain!
- Integral fridge/freezer



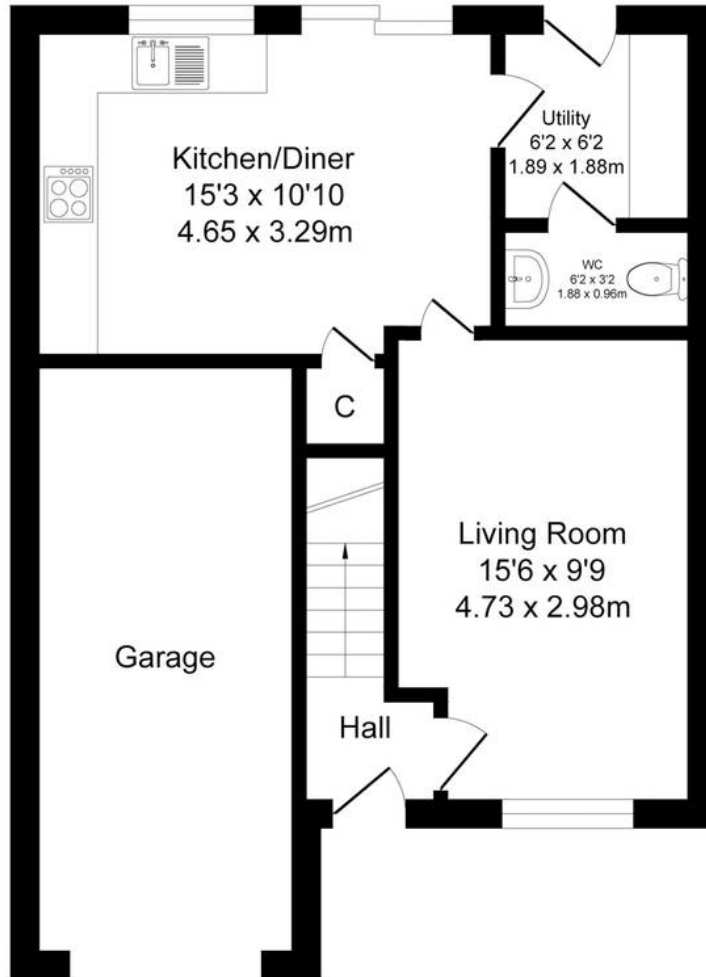




Garrett Meadow, Manchester

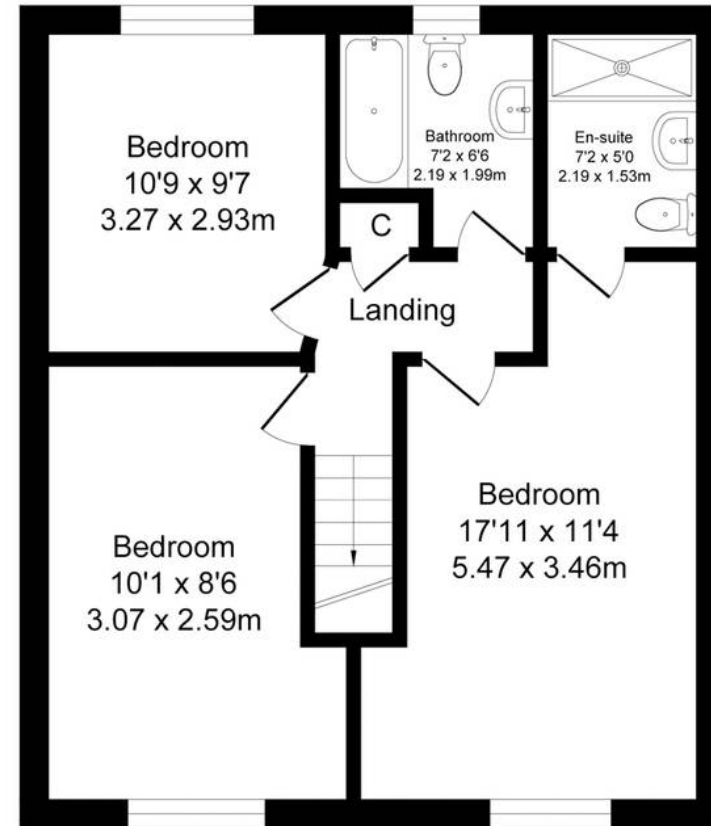
Total Approx. Floor Area 1174 Sq.ft. (109.1 Sq.M.)

Surveyed and drawn by Lens Media for illustrative purposes only. Not to scale. Whilst every attempt was made to ensure the accuracy of the floor plan, all measurements are approximate and no responsibility is taken for any error.



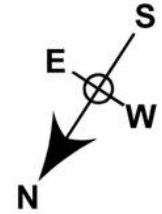
Ground Floor

Approx. Floor Area 609 Sq.Ft (56.6 Sq.M.)



First Floor

Approx. Floor Area 565 Sq.Ft (52.5 Sq.M.)





Millbrooke Estate Agents

271 Mosley Common Road, Worsley, Manchester - M28 1BZ

0161 790 5154 • hello@millbrooke.co • millbrooke.co

