



15 Chapelhill, Kirkcaldy, KY2 6PX

Offers Over £100,000



15 Chapelhill Kirkcaldy KY2 6PX

OFFERS OVER
£100,000

Number 15 is a well-presented terraced bungalow in sought after, quiet residential location. Ideally located close to excellent amenities.

This lovely bungalow offers a fabulous opportunity to have an affordable starter home and will also suit downsizers.

The property is situated in a popular residential location just a short distance from the Fife Central Retail Park and A92, making it ideal for commuting. The town centre is close-by, with excellent shopping facilities, main-line train station, Adam Smith theatre, museum, leisure complex, beaches, parks, Fife College and schools.

Accommodation comprises an entrance porch, bright lounge with a window to the front. Cupboard. A door from the lounge leads into the breakfasting kitchen which is fitted with light base and wall units, stainless steel sink and drainer. Electric hob and oven. Space for washing machine and fridge freezer. Window to the rear. A door leads into the sun room which is glazed on three sides and a door leads to the rear garden. The double bedroom is fitted with ample storage facilities and a window to the rear.

The shower room is fitted with a W.C., wash hand basin and corner shower cubicle with mixer shower. Opaque window.

A Ramsay Type ladder from the hallway leads to the two attic rooms.

There is good storage space throughout.

The gardens to the front and rear are laid out for ease of maintenance with an open aspect to the front. Parking is available close to hand.





- Well-presented Mid Terraced Cottage with open aspect to the front
- Porch
- Hallway
- Lounge
- Sun room
- Breakfasting kitchen
- Double bedroom
- Shower room
- Attic rooms
- Gardens to front & rear. Parking close to hand

INCLUDED

All fitted carpets, fitted floor coverings.

SERVICES

Mains water, drainage and electricity.

VIEWING

By appointment through our Rollos Cupar Office
Telephone: 01334654081

COUNCIL TAX BAND A

EPC RATING: E

FLOOR AREA: 559.00 SQ FT







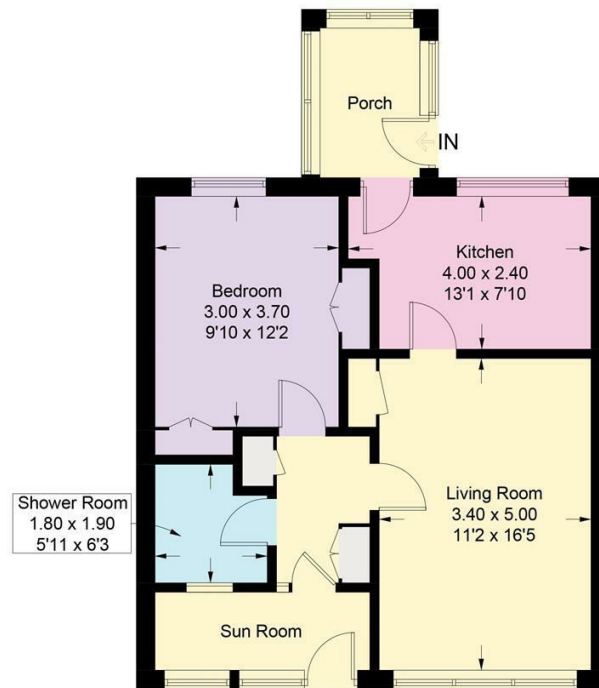
Room Sizes

Approximate measurements

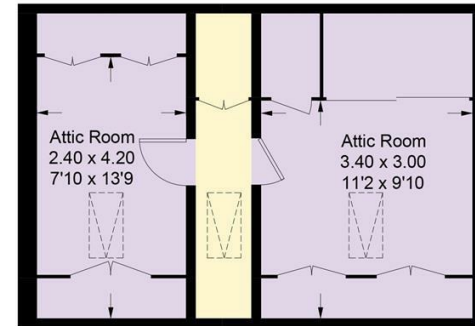
Living room	11'1" x 16'4"
Bedroom	9'10" x 12'1"
Kitchen	13'1" x 7'10"
Shower room	5'10" x 6'2"
Attic room	7'10" x 13'9"
Attic room	11'1" x 9'10"



15 Chapelhill, Kirkcaldy



Ground Floor



Attic Floor

Illustration for identification purposes only, measurements are approximate, not to scale. Fourlabs.co © (ID1267029)



WWW.ROLLOS.CO.UK

24 hour answering service at all our offices

CUPAR

67 Crossgate, Cupar,
Fife KY15 5AS
T: 01334 654081
E: cupar@rollos.co.uk

ST ANDREWS

6 Bell Street, St Andrews,
Fife KY16 9UX
T: 01334 477700
E: standrews@rollos.co.uk

ST ANDREWS

114 South Street, St Andrews,
Fife KY16 9QD
T: 01334 477774
E: propertyletting@rollos.co.uk

GLENROTHES

North House, North Street,
Glenrothes, Fife KY7 5NA
T: 01592 759414
E: glenrothes@rollos.co.uk

We are pleased to offer a
free valuation and quotation
without any obligation.

Contact our Property Department
at any of our offices.