



24 Maitland Drive, Cupar, KY15 5EU

Fixed Asking Price £160,000



24 Maitland Drive
Cupar
KY15 5EU

FIXED ASKING PRICE
£160,000

Number twenty-four is mid terraced villa which is situated within a popular established residential area of the town with communal parking located close to hand.

The property is accessed via a UPVC door into the kitchen which is fitted with white base and wall units, coordinating grey work surfaces and stainless-steel sink and drainer, electric hob and wall mounted oven with microwave above.

Washing machine and fridge freezer. Walk in storage cupboard. The lounge offers a picture window to the front, electric fire set within stone and timber surround. The conservatory is glazed on three sides and a door leads to the rear garden. Perspex pitched roof. A staircase leads to the upper level where a window over looks the garden to the rear from the upper landing.

Bedroom one offers a window to the front and fitted bedroom furniture on one wall. Bedroom two offers a window to the front. The bathroom offers W.C., wash hand basin and bath. Separate shower cubicle with electric shower. Opaque window.

The property offers excellent storage facilities throughout, electric heating and double glazing.

The garden to the front is laid out for ease of maintenance with a storage out shed. To the rear the garden is also laid out for ease of maintenance with access to communal path to the rear.





- Mid terraced villa
- Lounge
- Kitchen
- Conservatory
- Two bedrooms
- Bathroom
- Storage facilities
- Electric heating and Double glazing
- Easy to maintain gardens to the front and rear
- Communal parking close to hand

INCLUDED

All fitted carpets and fitted floor coverings, fridge freezer and washing machine.

SERVICES

Mains water, drainage and electricity.

VIEWING

By appointment through our Rollos Cupar Office
Telephone: 01334654081

COUNCIL TAX BAND B

EPC RATING: E

FLOOR AREA: 947.00 SQ FT







Room Sizes

Approximate measurements

Lounge	10'4" x 15'4"
Kitchen	8'11" x 18'5"
Conservatory	11'11" x 10'6"
Bedroom	9'9" x 15'1"
Bathroom	6'1" x 8'10"



24 Maitland Drive, Cupar

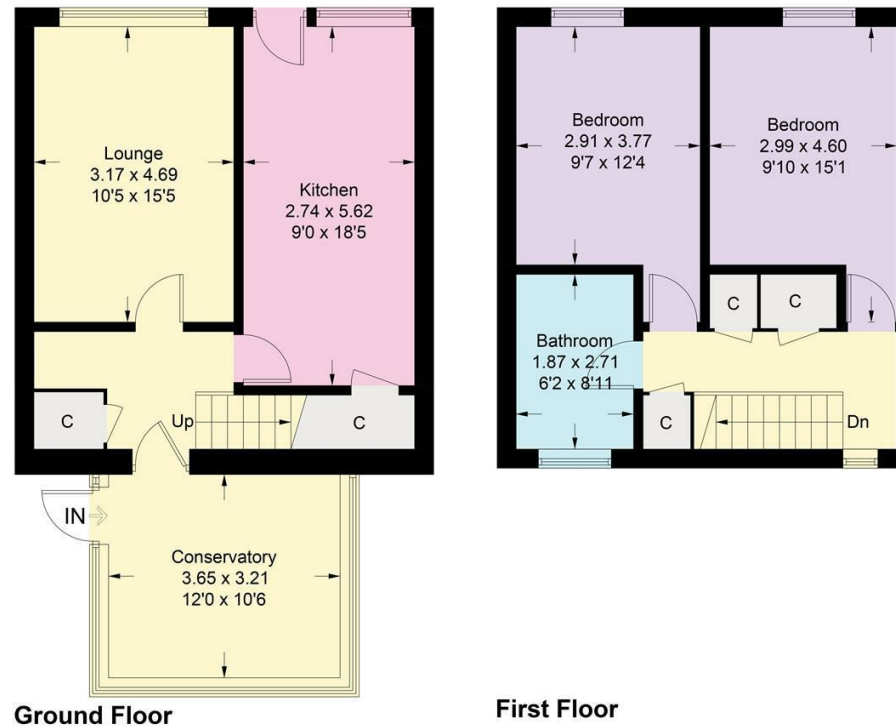


Illustration for identification purposes only, measurements are approximate, not to scale. floorplansUsketch.com © (ID1080741)



WWW.ROLLOS.CO.UK

24 hour answering service at all our offices

CUPAR

67 Crossgate, Cupar,
Fife KY15 5AS
T: 01334 654081
E: cupar@rollos.co.uk

ST ANDREWS

6 Bell Street, St Andrews,
Fife KY16 9UX
T: 01334 477700
E: standrews@rollos.co.uk

ST ANDREWS

114 South Street, St Andrews,
Fife KY16 9QD
T: 01334 477774
E: propertyletting@rollos.co.uk

GLENROTHES

North House, North Street,
Glenrothes, Fife KY7 5NA
T: 01592 759414
E: glenrothes@rollos.co.uk

We are pleased to offer a
free valuation and quotation
without any obligation.

Contact our Property Department
at any of our offices.