



Large garden with countryside views



Plot 61, The Esk - Farries Field, Stainburn

- Last Remaining Bungalow
- Prime location – open views over the fields to the rear of the property
- Master bedroom with en suite shower room
- Utility area and integral garage
- Spacious lounge overlooking rear garden
- South Facing Garden
- Three good-size bedrooms
- Family bathroom with bath and overhead shower
- uPVC anthracite coloured windows and French doors
- 10 Year Warranty

£324,000



Plot 61, The Esk - Farries Field, Stainburn

DESCRIPTION

A stylish and modern 3-bed detached bungalow featuring a well-proportioned hallway, which flows naturally into the main living areas. The property features an open-plan kitchen and dining area with beautiful French doors opening out to the rear patio/garden. The kitchen is fully integrated with appliances as standard. The Esk also boasts a spacious lounge area overlooking the rear garden and filling the property with light.

There are three good-size bedrooms, including a master bedroom with en suite shower room and a family bathroom with bath and overhead shower. A useful utility area and integral garage complete this stylish and spacious bungalow. Externally, there is a Tegula Block paved driveway, turfed gardens to the front and rear and all our homes feature our signature uPVC anthracite coloured windows and French doors.

We are renowned for building stylish properties in desirable areas, and incorporating a high specification. The site is located on the north-eastern edge of Stainburn, 1.5 miles from Workington and allowing easy access to shops, services and amenities. We have committed to providing valuable green spaces, which also includes wildflower meadows and planting.

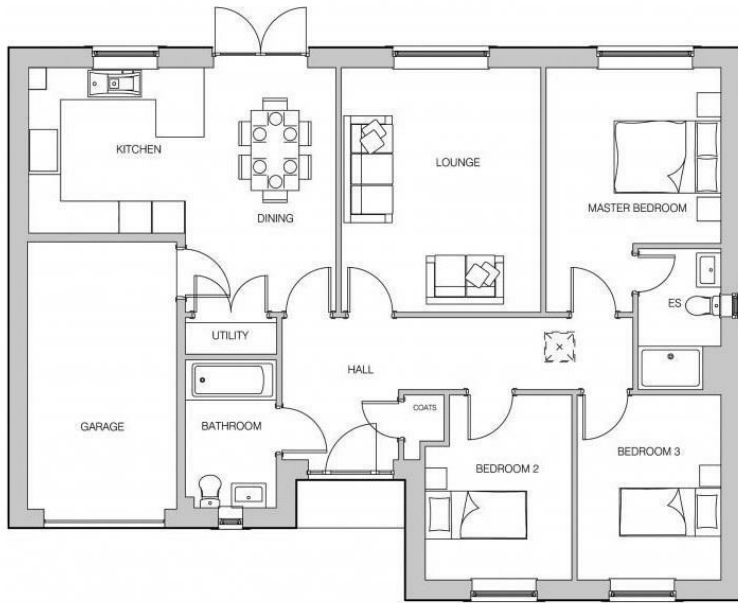
Viewing by Appointment.

For all enquiries or to view, please contact the Farries Field Sales Office, or alternatively contact Hunters Estate Agents.

Please note, the images shown are for illustration purposes based on the floor plans of each house type and may not be an exact representation of the end property.







Ground Floor

Garage	2790 × 5000 [9'-2" × 16'-5"]
Hall	6580 × 2660 [21'-7" × 8'-9"]
Bathroom	1680 × 2740 [5'-6" × 9'-0"]
Kitchen / Dining	5740 × 4580 [18'-10" × 15'-0"]
Lounge	3740 × 4580 [12'-3" × 15'-0"]
Master Bed	3280 × 4580 [10'-9" × 15'-0"]
En-Suite	1530 × 2610 [5'-0" × 8'-7"]
Bed 3	2690 × 3460 [8'-10" × 11'-4"]
Bed 2	2740 × 3460 [9'-0" × 11'-4"]

Viewings

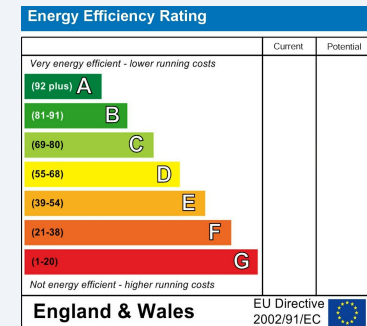
Please contact centralhub@hunters.com, if you wish to arrange a viewing appointment for this property or require further information.

Valuations

For a valuation of your property, please email the team with your property details, contact information and the times you are available.

ENERGY PERFORMANCE CERTIFICATE

The energy efficiency rating is a measure of the overall efficacy of a home. The higher the rating the more energy efficient the home is and the lower the fuel bills will be.



These particulars are intended to give a fair and reliable description of the property but no responsibility for any inaccuracy or error can be accepted and do not constitute an offer or contract. We have not tested any services or appliances (including central heating if fitted) referred to in these particulars and the purchasers are advised to satisfy themselves as to the working order and condition. If a property is unoccupied at any time there may be reconnection charges for any switched off/disconnected or drained services or appliances - All measurements are approximate.

THINKING OF SELLING? If you are thinking of selling your home or just curious to discover the value of your property, Hunters would be pleased to provide free, no obligation sales and marketing advice. Even if your home is outside the area covered by our local offices we can arrange a Market Appraisal through our national network of Hunters estate agents.

