



Carlton Gardens

Stanwix, Carlisle, CA3 9NP

Guide Price £515,000



- Magnificent Semi-Detached Family Home
- Retaining a Wealth of Character and Original Features
- Five Double Bedrooms
- Beautiful Walled Rear Garden with Lawn & Patio
- Gas Central Heating and Double Glazing Throughout

- Peacefully Located within an Exclusive 'North of the River' Location
- Four Reception Rooms, Two with Bay Windows
- Wet Room, Bathroom and Shower Room
- Substantial Detached Garage with EV Charger
- EPC - D

Carlton Gardens

Stanwix, Carlisle, CA3 9NP

Guide Price £515,000



This five bedroom, four reception Edwardian home offers exceptional space for family living and is situated within one of Carlisle's most prestigious addresses. Retaining a wealth of its original features and character, the home offers elegant accommodation with modern comforts including a outstanding fitted kitchen and luxurious bathroom, shower room & wet room. Externally, the rear garden has been beautifully landscaped and greatly improved, creating a perfect space for outdoor entertaining and alfresco dining with the addition of a recently constructed and substantial detached garage incorporating an EV charger. Ideal for those searching for a finer property to call home, a viewing is imperative to appreciate every aspect of 6 Carlton Gardens, Stanwix.

The accommodation briefly comprises entrance vestibule, hallway, lounge, dining room, sitting room, breakfast room, kitchen, rear hall, utility room and wet room to the ground floor with a split-level landing, five double bedrooms, bathroom, shower room and WC on the first floor. Externally the property has a walled garden to the rear, small gardens to the front and side and a detached garage to the rear. Gas central heating and double glazing throughout. EPC - D and Council Tax Band - E.

Situated within Carlton Gardens, a highly sought after location to the North of Carlisle, just off Stanwix Bank & Scotland Road, with local amenities including convenience store, newsagents, public houses, and restaurants all within walking distance. For the little ones, you have the desirable Stanwix Primary School close by and reputable Secondary Schools nearby and within the City Centre. Access to a range of major transport routes including the M6 (J44), A69, A7 and A595 are all within a short drive.

ENTRANCE VESTIBULE

Entrance door from the front with feature glazed door to the hallway and original tiled flooring.

HALLWAY

Internal doors to the lounge, dining room, sitting room and breakfast room, stairs to the first floor split-level landing, under-stairs cupboard with lighting, and radiator. Fitted to the staircase is a Handicare stairlift.

LOUNGE

Double glazed bay window to the front aspect, radiator and gas fire.

DINING ROOM

Double glazed bay window to the side aspect, two radiators and gas stove.

SITTING ROOM

Double glazed window to the front aspect, radiator and gas fire.

BREAKFAST ROOM

Double glazed window to the rear aspect, built-in cupboard beside the chimney breast, feature wine-rack unit, wood-burning stove, wall-mounted gas boiler, radiator, ceiling-mounted wooden clothes airer and internal door to the kitchen.

KITCHEN

A contemporary fitted kitchen comprising a range of base, wall, drawer and tall storage units with stone worksurfaces, matching upstands and tiled splashbacks above. Freestanding Rangemaster stove with Rangemaster extractor hood, integrated NEFF microwave, integrated NEFF dishwasher, Fisher & Paykel American Fridge Freezer, two-bowl Belfast sink with mixer tap, recessed spotlights, three double glazed windows to the rear aspect, tiled flooring, underfloor heating and internal door to the rear hall.

REAR HALL

Internal door to the utility room and external door to the rear garden.

UTILITY ROOM

Fitted base, wall and tall units with wooden worksurface and tiled splashbacks. Bosch washing machine, Bosch tumble drier, one bowl Belfast sink with mixer tap, tiled flooring, two double glazed windows to the rear aspect and internal door to the wet room.

WET ROOM

Three piece suite comprising WC, pedestal wash hand basin and wet room shower with mains powered shower. Fully-tiled walls, tiled flooring, radiator, extractor fan and an obscured double glazed window.

LANDING

With stairs up from the ground floor hallway, with internal doors to four bedrooms and bathroom on the main landing with internal doors to bedroom five, shower room and WC on the split level. One double glazed window to the rear aspect and a feature stain-glazed skylight window.

BEDROOM ONE

Double glazed windows to the side aspect, radiator and exposed floorboards.

BEDROOM TWO

Double glazed window to the front aspect, radiator, retained fireplace and built-in cupboard.

BEDROOM THREE

Double glazed window to the front aspect, radiator, retained fireplace and built-in cupboard.

BEDROOM FOUR

Double glazed window to the rear aspect, radiator and retained fireplace.

BATHROOM

Three piece suite comprising WC with high-level cistern, pedestal wash hand basin and roll-top bath with hand shower attachment. Part-tiled walls, tiled flooring, chrome towel radiator, recessed spotlights, extractor fan and an obscured double glazed window.

BEDROOM FIVE

Double glazed window to the rear aspect and radiator.

SHOWER ROOM

Two piece suite comprising vanity wash hand basin and Matki step-in shower enclosure with mains powered shower and rainfall shower head. Part-tiled walls, tiled flooring, chrome towel radiator, recessed spotlights, extractor fan and an obscured double glazed window.

WC

Comprising WC, part-tiled walls, tiled flooring, recessed spotlights and an obscured double glazed window.

EXTERNAL

To the front of the property is a small front and side garden area which benefits from mature trees, shrubs, lawn and hedging. An access pathway from the pavement through double brick gateposts provides access down the side of the property towards the front door and beyond to the rear garden. To the rear of the property is a beautifully landscaped walled garden complete with a lawn, vegetable patches, paved seating area and concrete pathways. A gate at the bottom of the garden provides access to the rear lane. Further to the rear elevation is a cold water tap with outdoor sink. Directly in-front of the property within Carlton Gardens is a generous tarmac area allowing parking for multiple vehicles however this does not form part of the title.

GARAGE

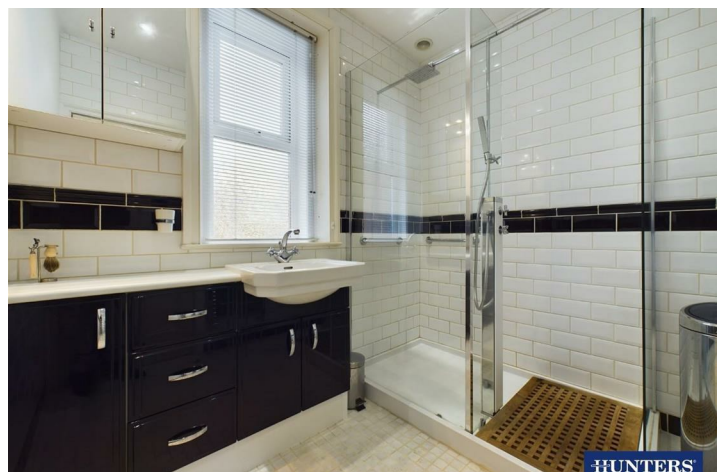
A recently constructed detached garage complete with an electric roller garage door from the rear lane, with a pedestrian access door from the rear garden. Internally the garage benefits from a generous number of power sockets, lighting, EV charger and three double glazed windows.

WHAT3WORDS

For the location of this property please visit the What3Words App and enter - drill.after.career

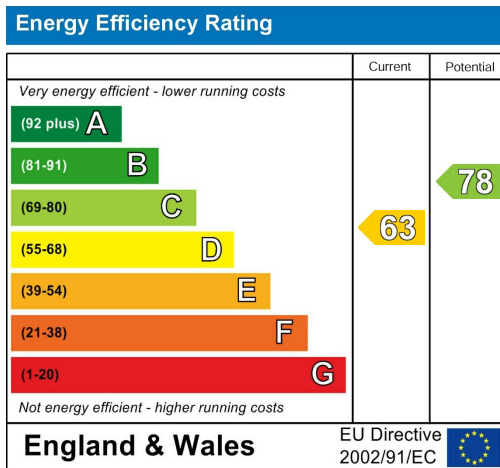
Floorplan







Energy Efficiency Graph

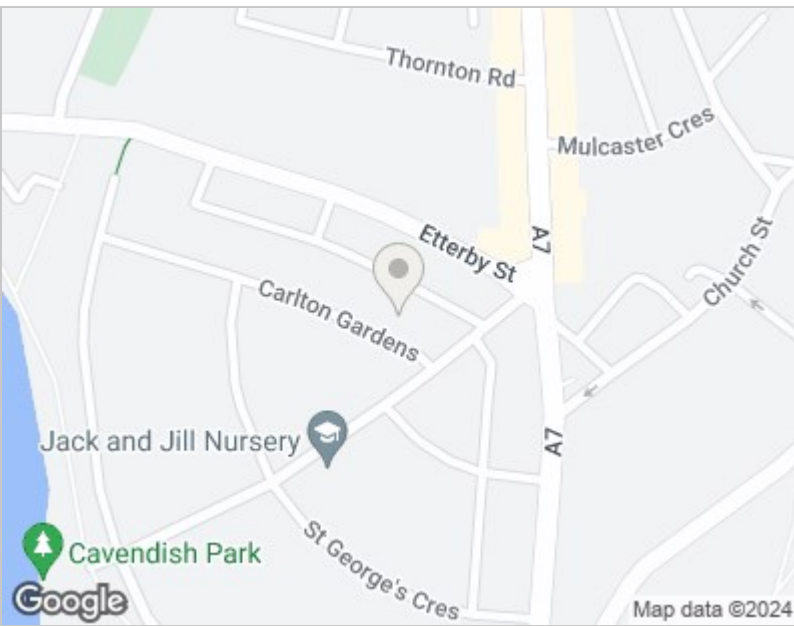


Viewing

Please contact our Hunters Carlisle Office on 01228 584249 if you wish to arrange a viewing appointment for this property or require further information.

Road Map

Hybrid Map



HUNTERS
HERE TO GET YOU THERE

Tel: 01228 584249



These particulars are intended to give a fair and reliable description of the property but no responsibility for any inaccuracy or error can be accepted and do not constitute an offer or contract. We have not tested any services or appliances (including central heating if fitted) referred to in these particulars and the purchasers are advised to satisfy themselves as to the working order and condition. If a property is unoccupied at any time there may be reconnection charges for any switched off/disconnected or drained services or appliances - All measurements are approximate. THINKING OF SELLING? If you are thinking of selling your home or just curious to discover the value of your property, Hunters would be pleased to provide free, no obligation sales and marketing advice. Even if your home is outside the area covered by our local offices we can arrange a Market Appraisal through our national network of Hunters estate agents.

56 Warwick Road, Carlisle, Cumbria, CA1 1DR
Tel: 01228 584249 Email: centralhub@hunters.com
<https://www.hunters.com>

