

JOHN BRAY & SONS



Ground Floor, 13 St Helens Crescent
, Hastings, TN34 2EN

Offers In Excess Of £250,000



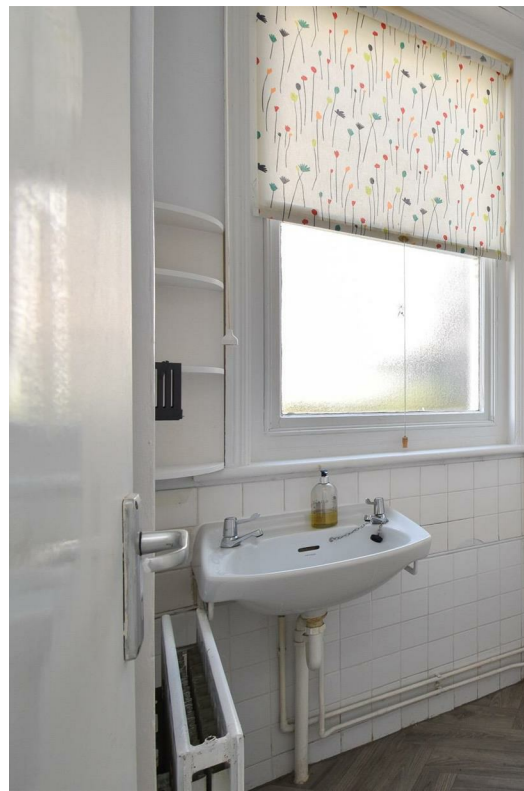
Ground Floor, 13 St Helens

Hastings, TN34 2EN

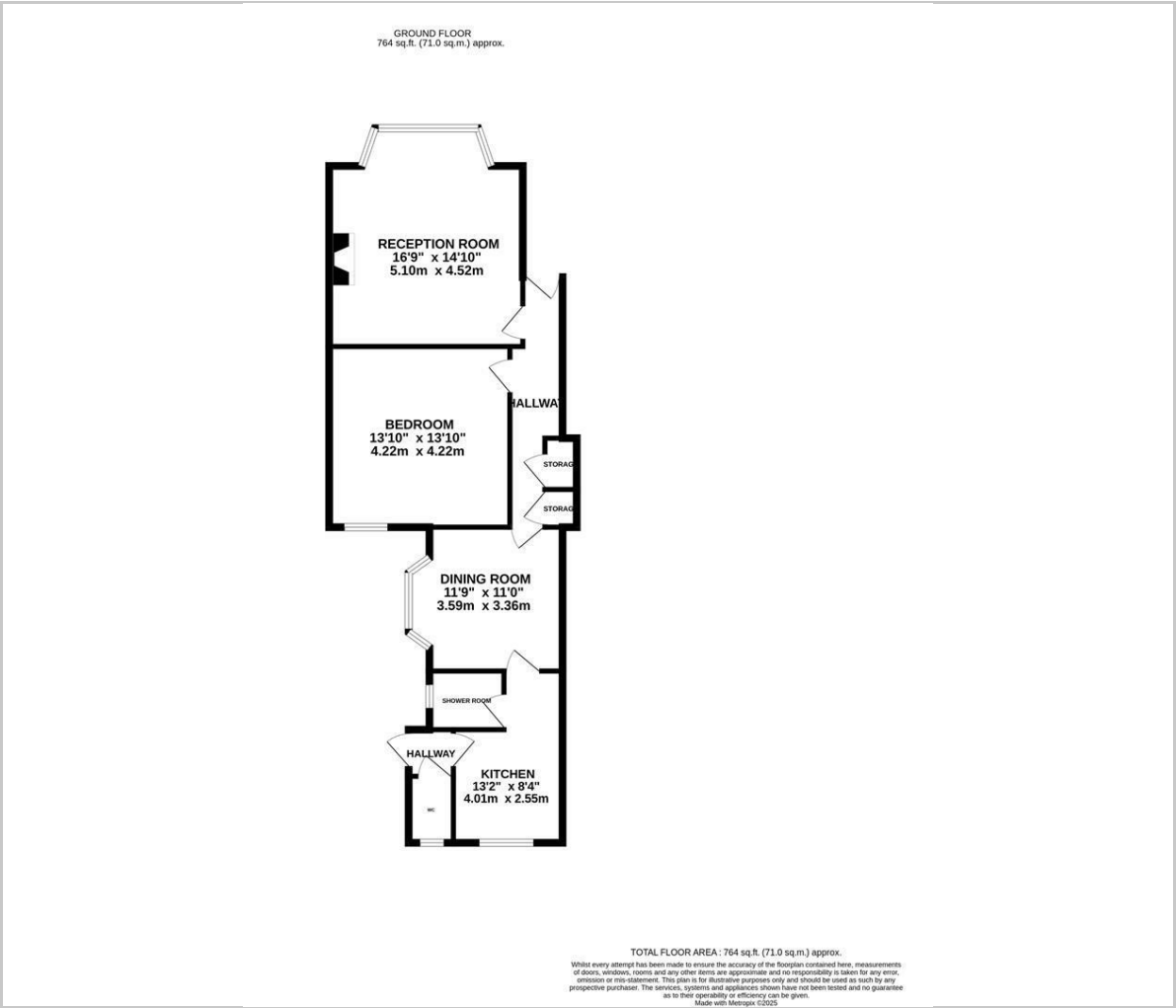
The property: a bright and spacious one bedroom garden apartment spanning the ground floor of this period residence. The accommodation comprises a large bay fronted living room measuring an impressive 16'9 x 14'10 while the fitted kitchen and separate dining room are positioned at the rear of the property. There is a double bedroom which overlooks the rear garden together with a shower room and separate cloakroom. The private rear garden offers the perfect space to dine al-fresco with an area of patio and shingle bordered by mature shrubs.

The location: positioned in a quiet street within a popular Blacklands location it's within easy reach of good transport links and within walking distance of St Helens Woods, Alexandra Park and Hastings Town centre where there is a mainline railway station with connections to London.





Floor Plan



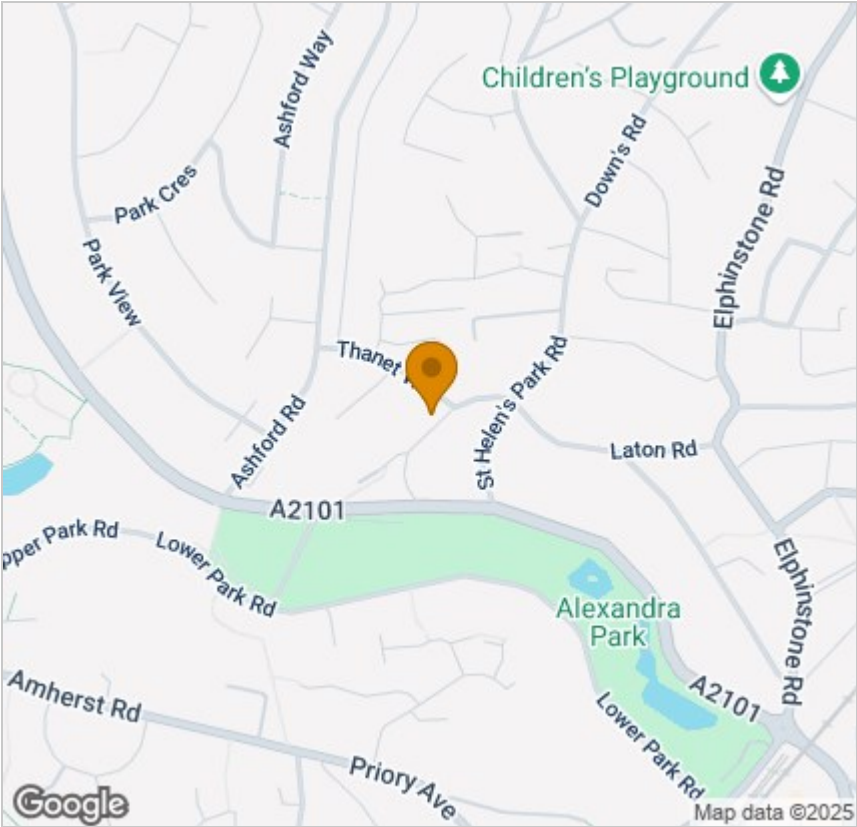
Viewing

Please contact our John Bray Hastings Sales Office on 01424 421544 if you wish to arrange a viewing appointment for this property or require further information.

These particulars, whilst believed to be accurate are set out as a general outline only for guidance and do not constitute any part of an offer or contract. Intending purchasers should not rely on them as statements of representation of fact, but must satisfy themselves by inspection or otherwise as to their accuracy. No person in this firms employment has the authority to make or give any representation or warranty in respect of the property.

72 High Street, Hasting, East Sussex, TN34 3EL
Tel: 01424 421544 Email: enquiries@johnbrayandsons.com www.johnbrayandsons.com

Area Map



Energy Efficiency Graph

