

JOHN BRAY & SONS



6a Holmesdale Gardens
Hastings, TN34 1LY

Offers In Excess Of £145,000

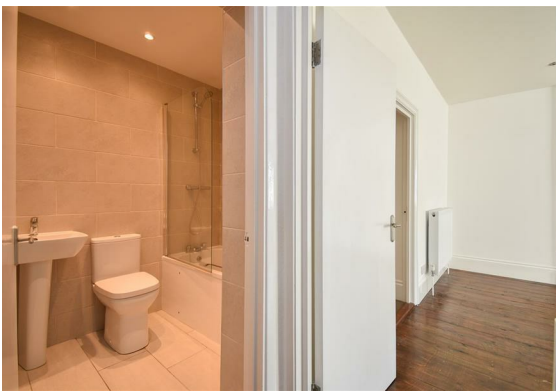


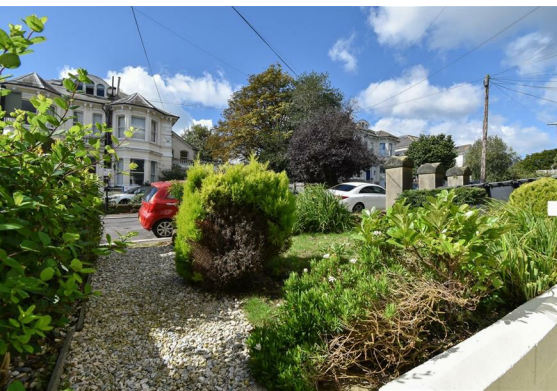
6a Holmesdale Gardens

, Hastings, TN34 1LY

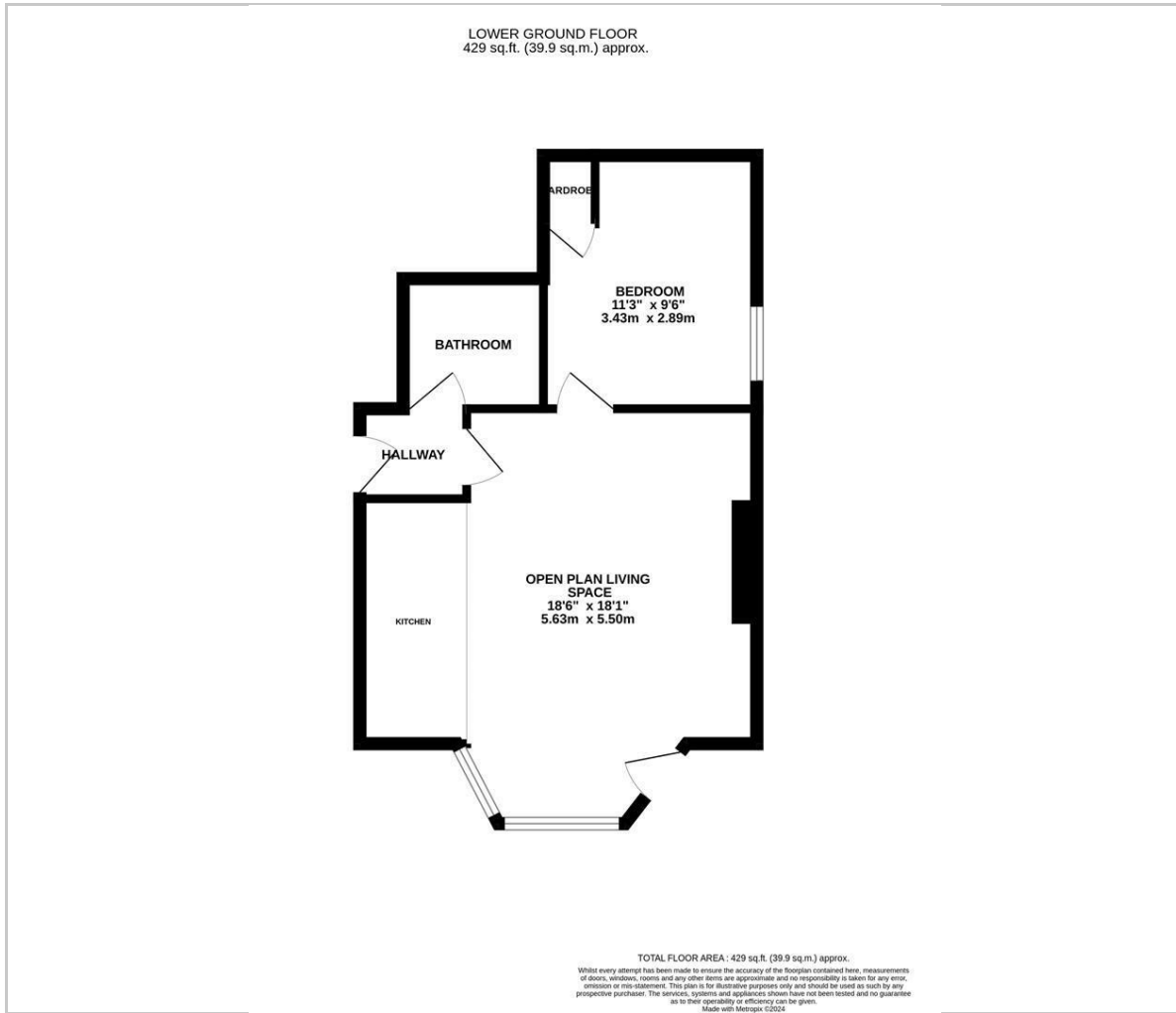
The property: a bright and spacious one bedroom apartment spanning the lower ground floor of this period residence. The accommodation is accessed via a private entrance and comprises an open plan living space which measures 18'6 x 18'1 with a large bay window and fitted kitchen providing ample storage space. There is a double bedroom with built-in storage to the rear of the property and a bathroom where there is a bath with shower and screen over. Externally there is an area of courtyard perfect for catching the sun followed by a raised level of garden with mature shrubs and plants.

The location: situated in a convenient location in Hastings town centre within immediate walking distance of the mainline railway station, shops, restaurants and the beach.





Floor Plan



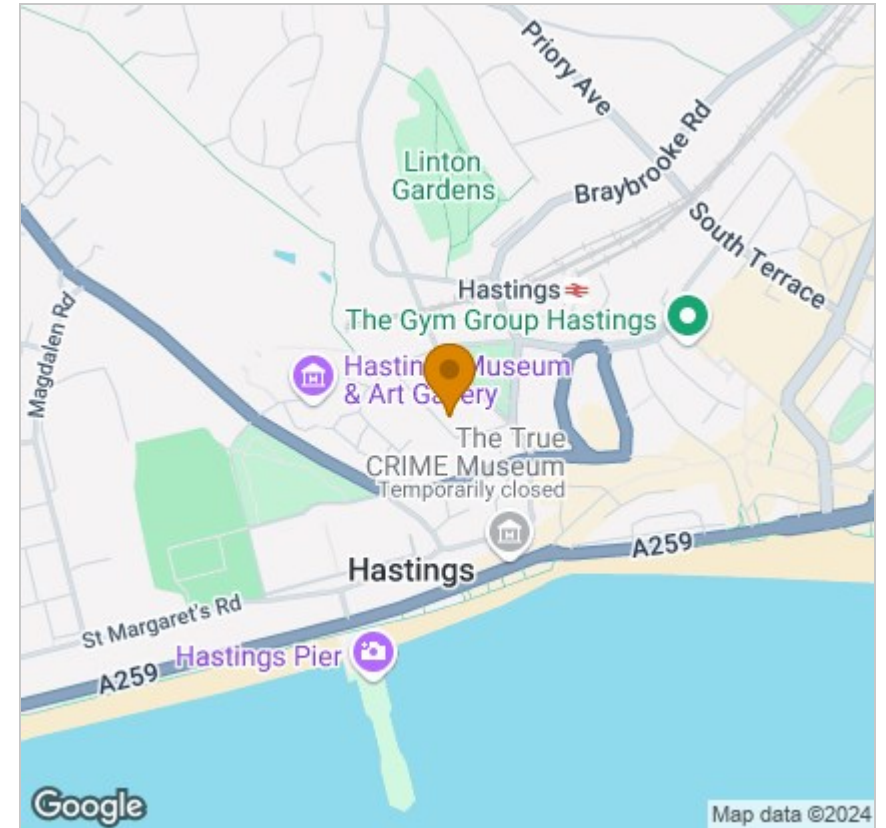
Viewing

Please contact our John Bray Hastings Sales Office on 01424 421544 if you wish to arrange a viewing appointment for this property or require further information.

These particulars, whilst believed to be accurate are set out as a general outline only for guidance and do not constitute any part of an offer or contract. Intending purchasers should not rely on them as statements of representation of fact, but must satisfy themselves by inspection or otherwise as to their accuracy. No person in this firm's employment has the authority to make or give any representation or warranty in respect of the property.

72 High Street, Hasting, East Sussex, TN34 3EL
Tel: 01424 421544 Email: enquiries@johnbrayandsons.com www.johnbrayandsons.com

Area Map



Energy Efficiency Graph

