

JOHN BRAY & SONS



108 Emmanuel Road
, Hastings, TN34 3LF

Offers In Excess Of £330,000



108 Emmanuel Road

, Hastings, TN34 3LF

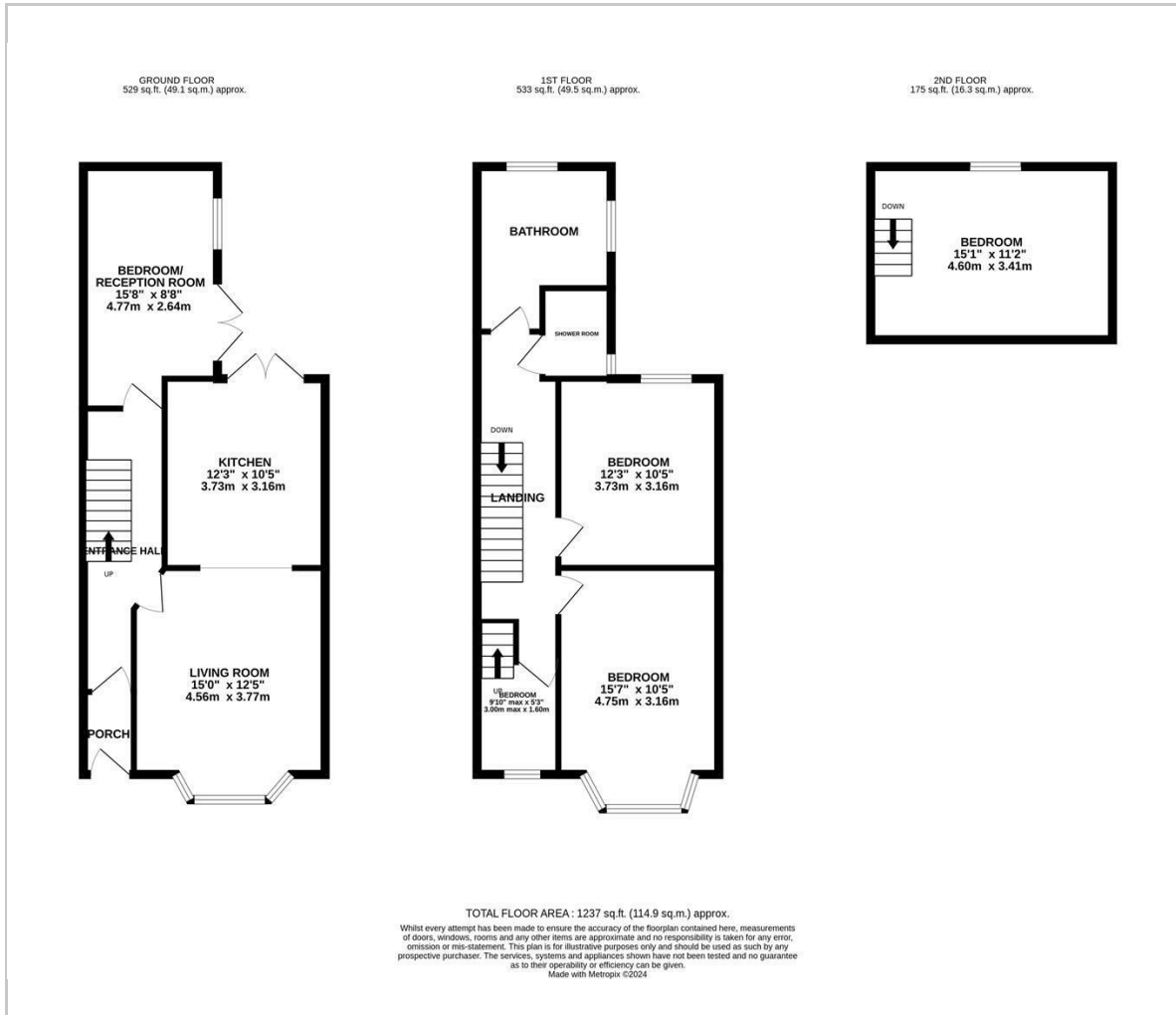
The property: a newly refurbished three / four bedroom house situated in a favoured position on the West Hill. The accommodation is well presented throughout and has been decorated with a neutral palette, the accommodation spans three storeys comprising a bay fronted living room which is open to the newly fitted kitchen. There is an additional room positioned on the ground floor at the rear of the property which could be used as an additional reception room or a fourth bedroom. On the first floor there are two double bedrooms along with a family bathroom and an additional shower room while the upper floor houses the principal bedroom, accessed via a further room on the first floor. Externally the tiered rear garden provides the perfect space to dine outdoors. Being sold with no onward chain.

The location: positioned in a sought after location on the West Hill within walking distance to both Hastings Old Town and Hastings Town centre where there is a mainline railway station. There is also a local shop just a short stroll away and easy access to Ore railway station.





Floor Plan



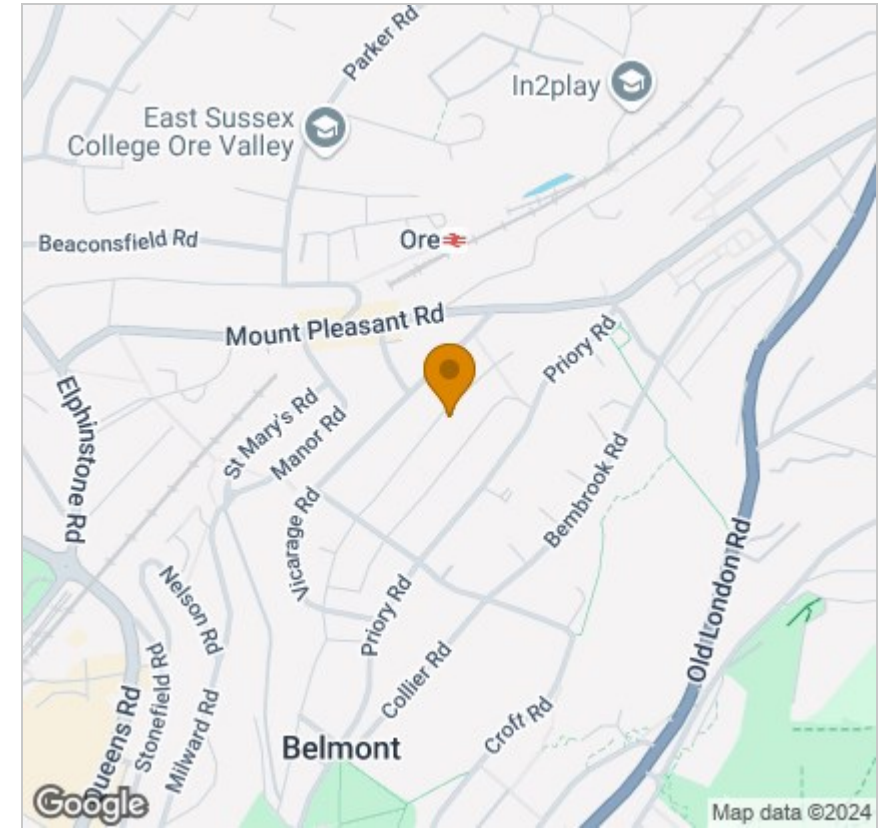
Viewing

Please contact our John Bray Hastings Sales Office on 01424 421544 if you wish to arrange a viewing appointment for this property or require further information.

These particulars, whilst believed to be accurate are set out as a general outline only for guidance and do not constitute any part of an offer or contract. Intending purchasers should not rely on them as statements of representation of fact, but must satisfy themselves by inspection or otherwise as to their accuracy. No person in this firm's employment has the authority to make or give any representation or warranty in respect of the property.

72 High Street, Hasting, East Sussex, TN34 3EL
 Tel: 01424 421544 Email: enquiries@johnbrayandsons.com www.johnbrayandsons.com

Area Map



Energy Efficiency Graph

