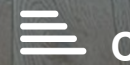


# JOHN BRAY & SONS



122 Emmanuel Road  
, Hastings, TN34 3LF

£1,200 Per Month



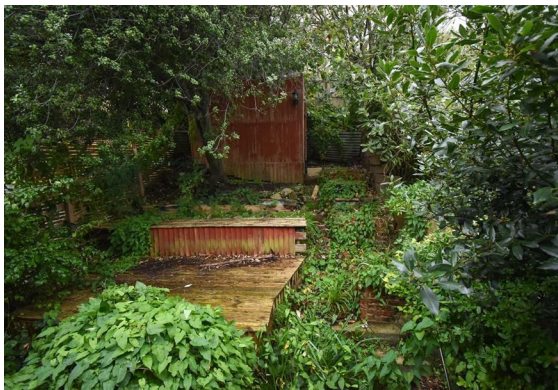


## 122 Emmanuel Road

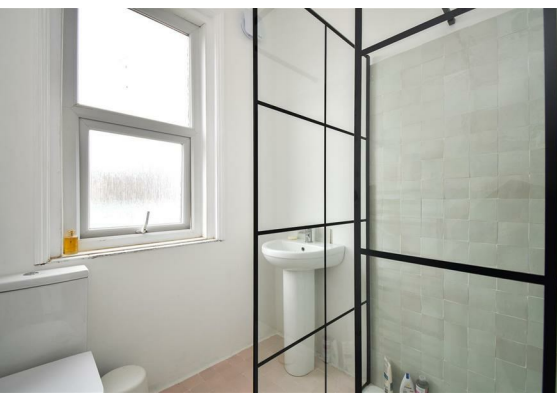
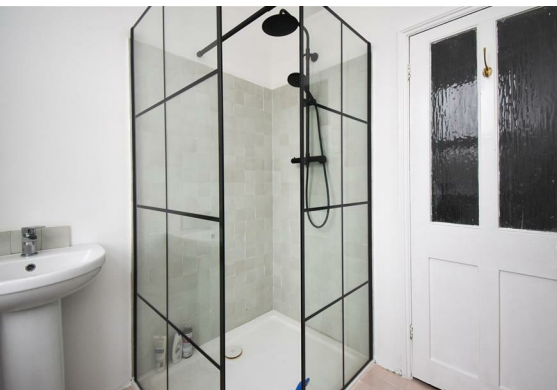
, Hastings, TN34 3LF

The property: a stylish three bedroom terraced house situated in a sought after West Hill location, set back from the road being just a short stroll from Hastings old town, the beach and Hastings Town centre. Ore railway station is also within immediate reach. Having been refurbished the accommodation here enjoys an open plan layout on the ground floor, the living area spans the rear of the property with bi-folding doors leading out to the tiered rear garden and the kitchen enjoys a sleek design fitted with contemporary pastel units housing integrated appliances and large bay window facing front aspect. On the first floor there are three bedrooms, two of which are generous double rooms along with a modern shower room with enclosed shower unit. Neutrally decorated throughout. Available September.

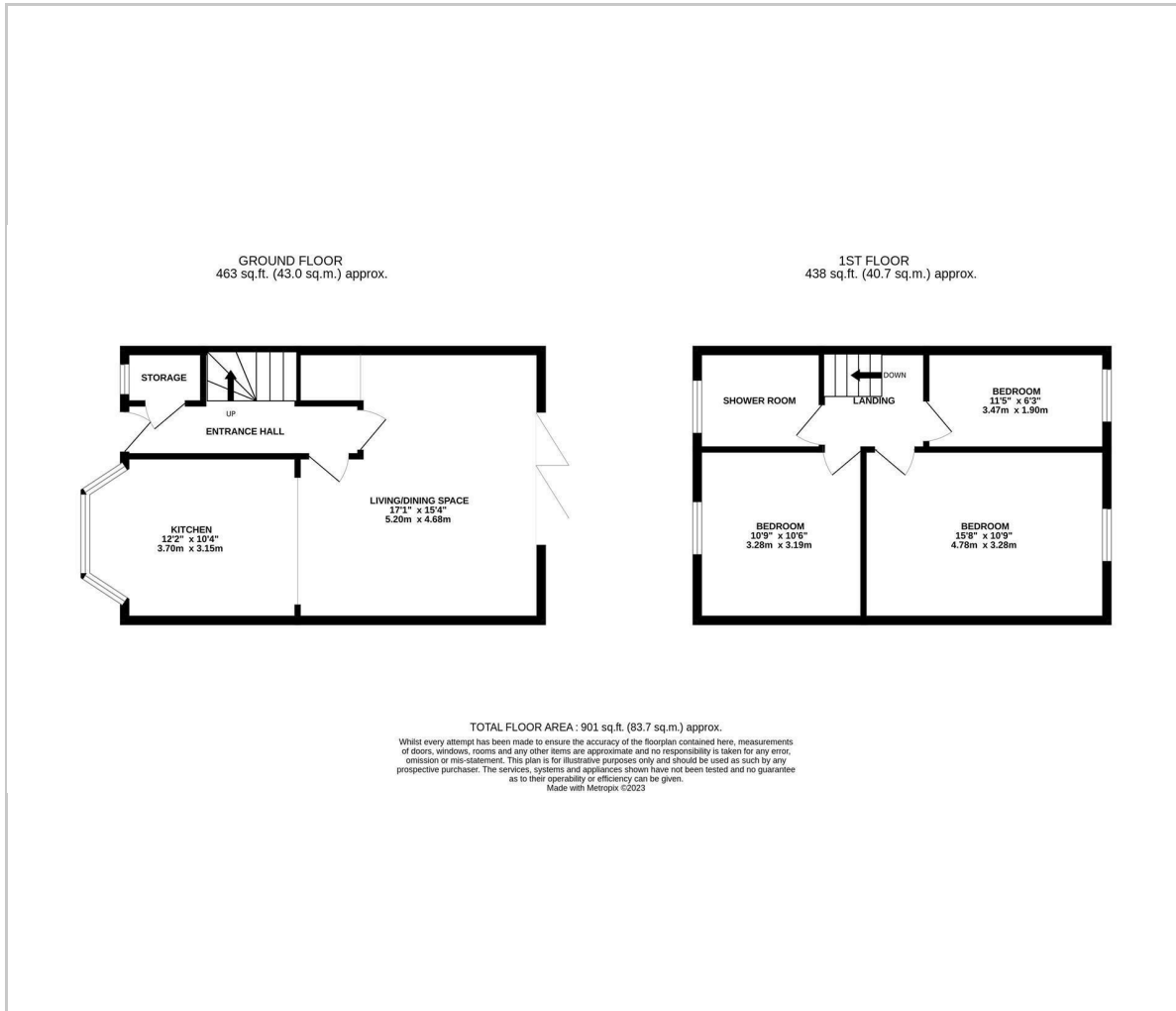
The location: The West Hill is equidistant to both Hastings Old Town and Town centre where there is a mainline railway station, it's positioned within easy walking distance of the beach, local shops and Ore railway station.







## Floor Plan



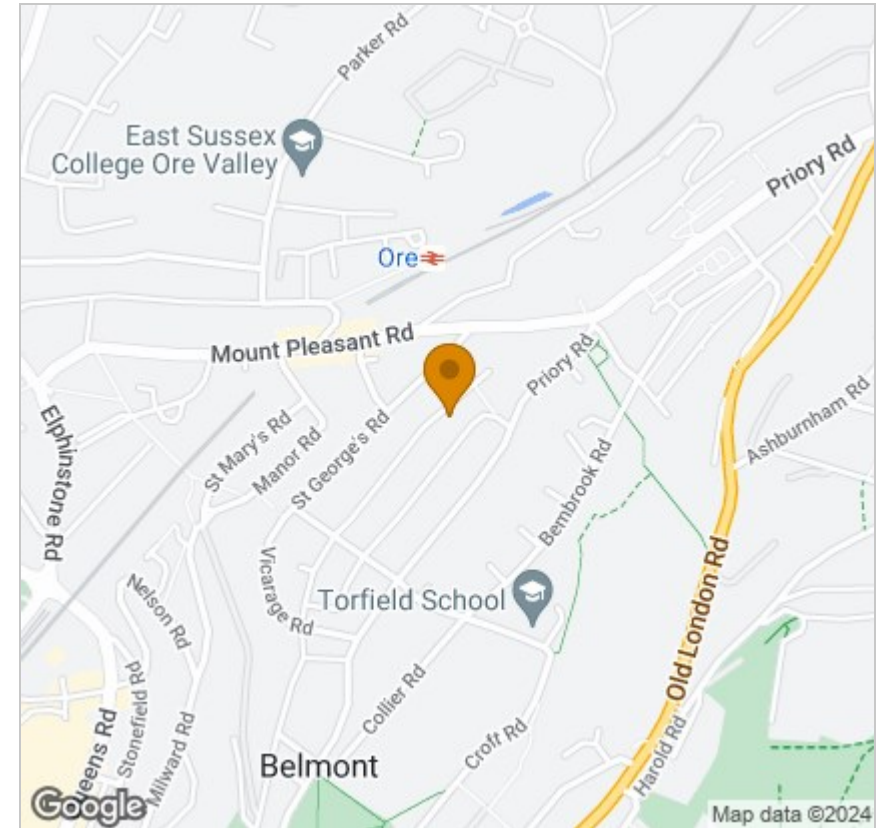
## Viewing

Please contact our John Bray Hastings Lettings Office on 01424 421544 if you wish to arrange a viewing appointment for this property or require further information.

These particulars, whilst believed to be accurate are set out as a general outline only for guidance and do not constitute any part of an offer or contract. Intending purchasers should not rely on them as statements of representation of fact, but must satisfy themselves by inspection or otherwise as to their accuracy. No person in this firm's employment has the authority to make or give any representation or warranty in respect of the property.

72 High Street, Hastings, East Sussex, TN34 3EL  
Tel: 01424 421544 Email: enquiries@johnbrayandsons.com www.johnbrayandsons.com

## Area Map



## Energy Efficiency Graph

