

JOHN BRAY & SONS



Smugglers Cottage, 9 East Parade
, Hastings, TN34 3AL

£1,600 Per Month

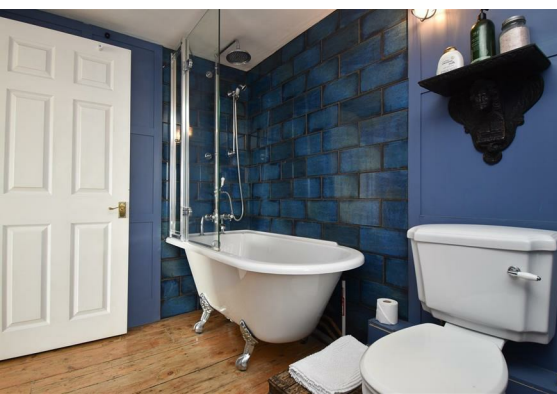


Smugglers Cottage, 9 East Hastings, TN34 3AL

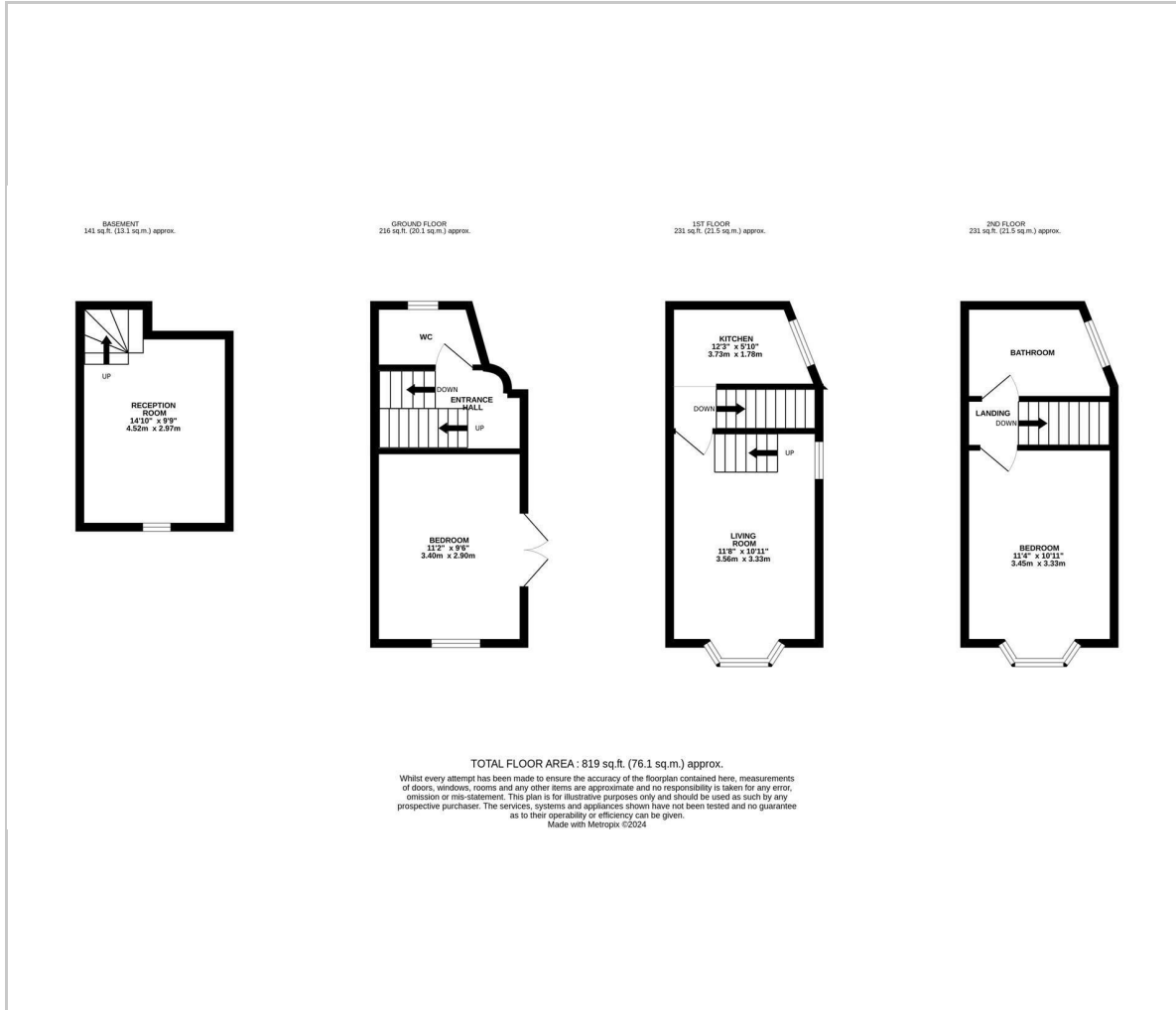
The property: a Grade II listed two/three bedroom fully furnished semi-detached house offering accommodation over four storeys. The accommodation comprises a living room with a bay window framing panoramic views of the beach and the boating lake, there is a modern fitted kitchen with integrated appliances and a second reception room which could be used as a third bedroom if needed. One of the double bedrooms is situated on the ground floor, enjoying a dual aspect with patio doors leading out to an area of raised patio, together with a downstairs cloakroom while the main bedroom is housed on the upper floor along with a family bathroom fitted with a roll top bath and a shower over. Available in August for short or long term let.

The location: situated in a sought after position on the seafront in the heart of Hastings Old Town, within immediate reach of independent shops and restaurants on George Street and the High street. Hastings Town centre is also just a short distance away offering shopping and leisure facilities and a mainline railway station with connections to London.





Floor Plan



Viewing

Please contact our John Bray Hastings Sales Office on 01424 421544 if you wish to arrange a viewing appointment for this property or require further information.

These particulars, whilst believed to be accurate are set out as a general outline only for guidance and do not constitute any part of an offer or contract. Intending purchasers should not rely on them as statements of representation of fact, but must satisfy themselves by inspection or otherwise as to their accuracy. No person in this firm's employment has the authority to make or give any representation or warranty in respect of the property.

72 High Street, Hasting, East Sussex, TN34 3EL
Tel: 01424 421544 Email: enquiries@johnbrayandsons.com www.johnbrayandsons.com

Area Map



Energy Efficiency Graph

