

HUNTERS[®]

EXCLUSIVE

The Bronte Collection Halifax Road, Blackstone Edge, Littleborough, OL15 0JG

£850,000

Property Images



HUNTERS[®]

EXCLUSIVE

Property Images



HUNTERS[®]

EXCLUSIVE

Property Images

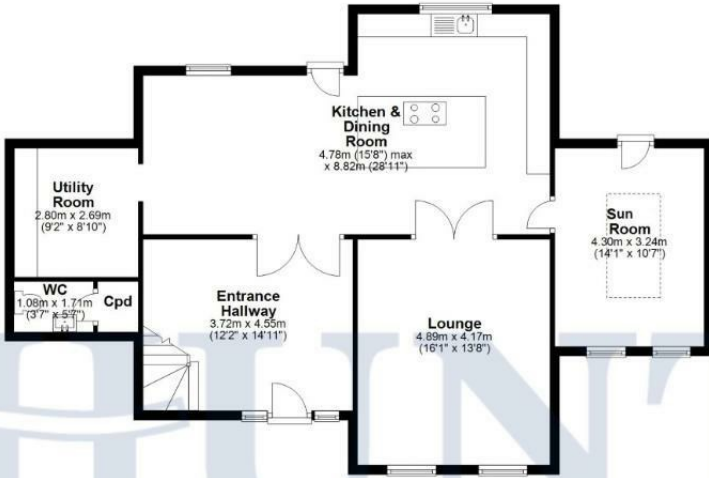


HUNTERS®

EXCLUSIVE

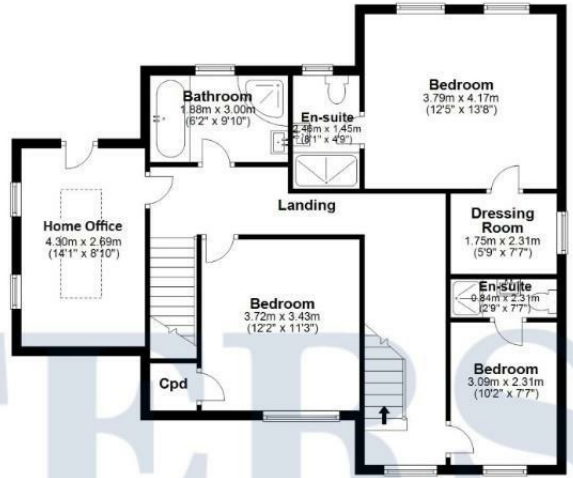
Ground Floor

Approx. 100.0 sq. metres (1076.5 sq. feet)



First Floor

Approx. 86.6 sq. metres (931.7 sq. feet)



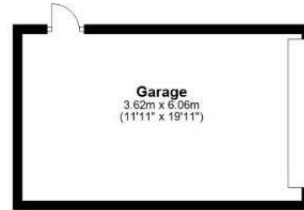
Second Floor

Approx. 51.1 sq. metres (550.6 sq. feet)



Third Floor

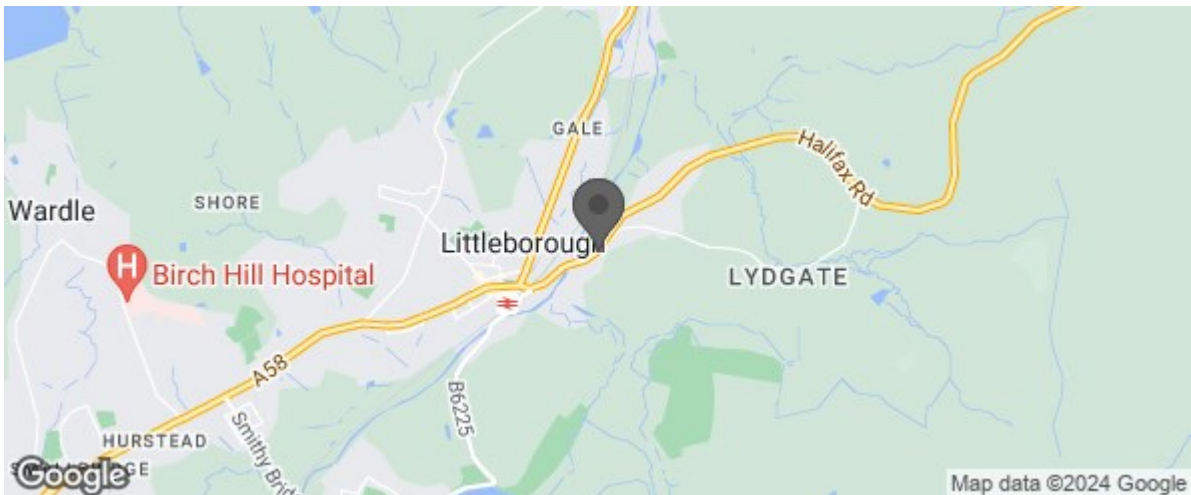
Approx. 21.9 sq. metres (236.2 sq. feet)



Total area: approx. 259.7 sq. metres (2795.0 sq. feet)

Disclaimer: This floorplan is for illustrative purposes only. All measurements are approximate and not guaranteed to be exact or to scale. Whilst all efforts have been made to ensure its accuracy we make no guarantee, warranty or representation and any buyer should confirm measurements using their own source.
 Created by EveryCloud Photography on behalf of Hunters Littleborough
 Plan produced using PlanUp.

Map



Summary

A stunning gated development approached by a sweeping driveway which will open up to reveal these truly stunning bespoke homes. Surrounding the historical former Honresfeld Library which was famous for their collection of original works by the Brontë sisters, which these houses will be named after. Built in 1873 and now fully restored as a private dwelling, the development has great historical significance. This property in particular is unique and one of a kind within this development and benefits from its own private driveway shared with the Honresfeld residents. Fabulous and generous accommodation, which will be finished to an exceptional standard throughout whilst boasting the most idyllic of settings with stunning viewings over the neighbouring fields. This development presents a statement of both character and grandeur; sympathetically designed and taking full advantage of the plots they sit on, resulting in spacious, light and quality accommodation. The versatile layout, includes a welcoming entrance hall, magnificent living open plan dining kitchen, separate lounge, a fabulous garden room, boot room utility, a home office with the most idyllic outlook, generous five double bedrooms and five and half bespoke bathroom facilities and a dressing room to the master suite. Externally there is a detached garage with landscaped gardens with different seating areas all cleverly landscaped to benefit from the open neighbouring fields as the backdrop.

Location

The Bronte Collection is nestled in the foothills of the picturesque south Pennines. Littleborough is one of the larger settlements in the borough, yet retains its village atmosphere with many local independent shops, cafes and restaurants. The town has a history of both wool and cotton weaving and the stone built heart of the town is a designated conservation area because of its special architectural qualities, including the Coach House Heritage Centre and the circular wheatsheaf buildings. Furthermore, the surrounding countryside and the tourist attractions of Hollingworth Lake and Watergrove Reservoir boast beautiful natural landscapes, perfect for days out. This desirable development is set within this idyllic location, yet still within walking distance to the centre of the village and the main line train station for Leeds and Manchester, with further easy access to the M62 Motorway, making this an ideal destination for commuters.

Material Information - Littleborough

Tenure Type; FREEHOLD

Council Tax Banding: TBC