



## Cobalt Point, Lanterns Court, Canary Wharf, E14

Price **£495 per week** | Furnished



# Cobalt Point, Lanterns Court, Canary Wharf, E14



1 Bedroom



1 Bathroom



1 Reception



Private Balcony



Gym



Near Canary Wharf Amenities



24-Hour Concierge



0.3 MI South Quay

A one bedroom apartment set in a modern development located close to Millwall Inner Dock and the local shops and amenities of Millharbour, Canary Wharf E14.

Features include a living room with full-height windows, recessed spot lighting, wood flooring and an open plan kitchen with fully integrated appliances. Good sized bedroom with built in wardrobes and the bathroom has a white suite and contemporary fittings.

Residents of Cobalt Point have the benefit of 24-hour concierge and a gym.

The development is located close to South Quay DLR and only 0.5 miles from Canary Wharf's jubilee line station, Jubilee Place and the main shopping areas.

**Local Authority:**

Tower Hamlets

**Council Tax Band:**

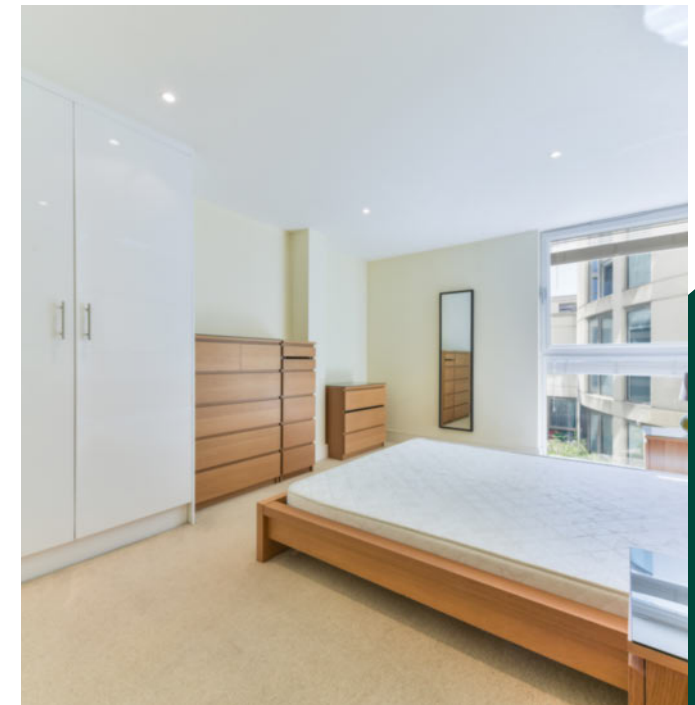
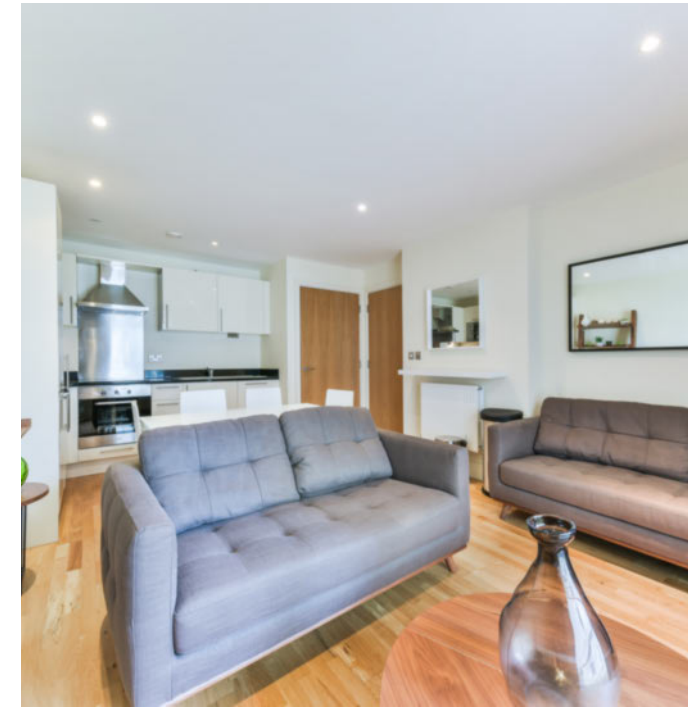
D

**EPC:**

C

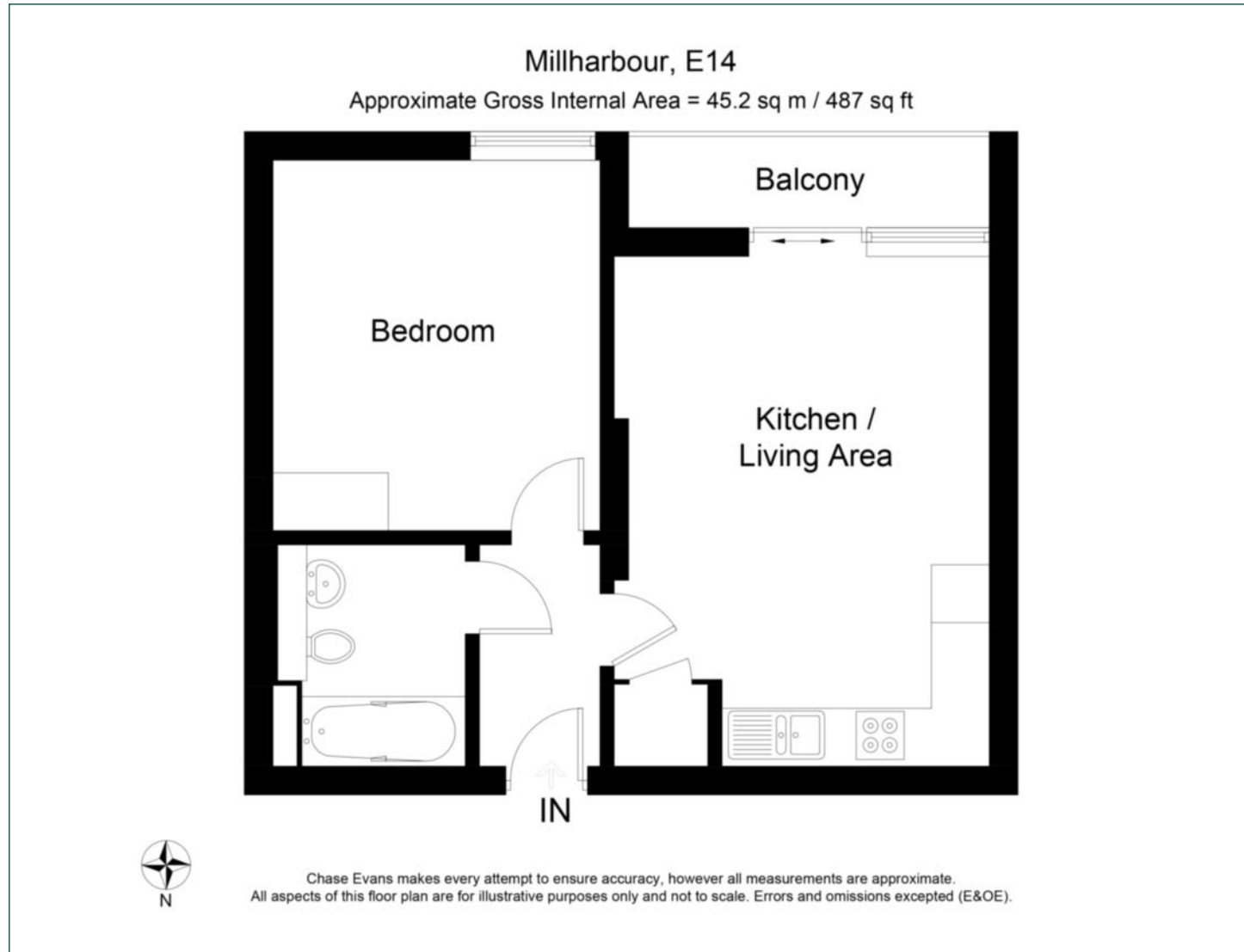
**Security deposit:**

equivalent to 5 weeks' rent



# Floorplan

487 sq ft | 45.2 sq m



## Pan Peninsula

Pan Peninsula, 1 Millharbour, London, E14 9XP

## Lettings

020 7536 7901 | [panp.lettings@chaseevans.com](mailto:panp.lettings@chaseevans.com)

## We're here to help.

IMPORTANT NOTICE - These particulars have been prepared in good faith and they are not intended to constitute part of an offer or contract. We have not performed a structural survey on this property and the services, appliances and specific fittings have not been tested. All photographs, measurements, floor plans and distances referred to are given as a guide and should not be relied upon.

[chaseevans.com](https://www.chaseevans.com)