



Cobalt Point, Lanterns Court, Millharbour, Canary Wharf, E14

Price **£515 per week** | Furnished



Cobalt Point, Lanterns Court, Millharbour, Canary Wharf, E14



1 Bedroom



1 Bathroom



1 Reception



Balcony



Gymnasium



Local Amenities



24-Hour Concierge



0.3 MI South Quay

A contemporary one bedroom apartment with balcony set in Cobalt Point, Canary Wharf, E14.. The property is located within easy access of South Quay DLR station and Canary Wharf Jubilee line tube station. Features include a living room with full-height windows, fitted kitchen with integrated appliances, wood flooring, double bedroom with build-in wardrobes and a bright tiled bathroom.

The property is offered furnished and benefits from a secure entry system. Residents of Cobalt Point have the benefit of 24-hour concierge and a gym. The development is located near DLR transport

links and Underground services from Canary Wharf. There are several amenities located nearby including restaurants, bars and shops. Local green spaces also provide ideal locations for leisure activities and riverside walks.



Local Authority:

Tower Hamlets

Council Tax Band:

D

EPC:

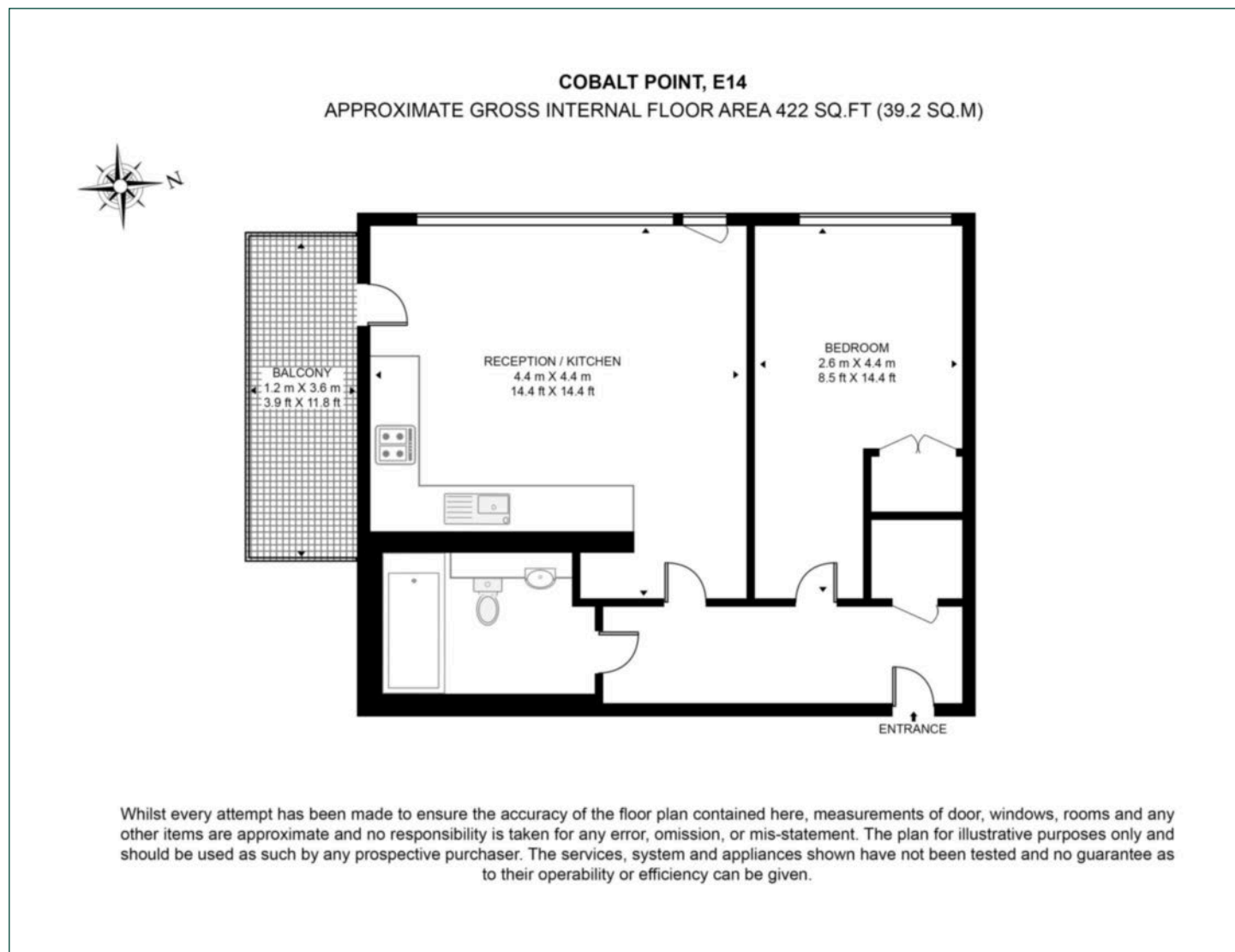
C

Security deposit:

equivalent to 5 weeks' rent

Floorplan

422 sq ft | 39.2 sq m



Pan Peninsula

Pan Peninsula, 1 Millharbour, London, E14 9XP

Lettings

020 7536 7900 | panp.lettings@chaseevans.co.uk

We're here to help.

IMPORTANT NOTICE - These particulars have been prepared in good faith and they are not intended to constitute part of an offer or contract. We have not performed a structural survey on this property and the services, appliances and specific fittings have not been tested. All photographs, measurements, floor plans and distances referred to are given as a guide and should not be relied upon.

chaseevans.com

 Chase Evans