



Waterford Court, Turnberry Quay, Canary Wharf, E14

Asking price **£390,000** | Leasehold



Waterford Court, Turnberry Quay, Canary Wharf, E14



1 Bedroom



1 Bathroom



1 Reception



Dockside Development



Local Amenities



Concierge Service



0.1 MI Crossharbour

A one bedroom apartment set on the 4th floor of a modern development located by Millwall Dock and within easy reach of Canary Wharf. Features include a living room with wood flooring, recessed spot lighting and an open plan kitchen with integrated appliances. The bedroom is double in size and the bathroom has contemporary fittings.

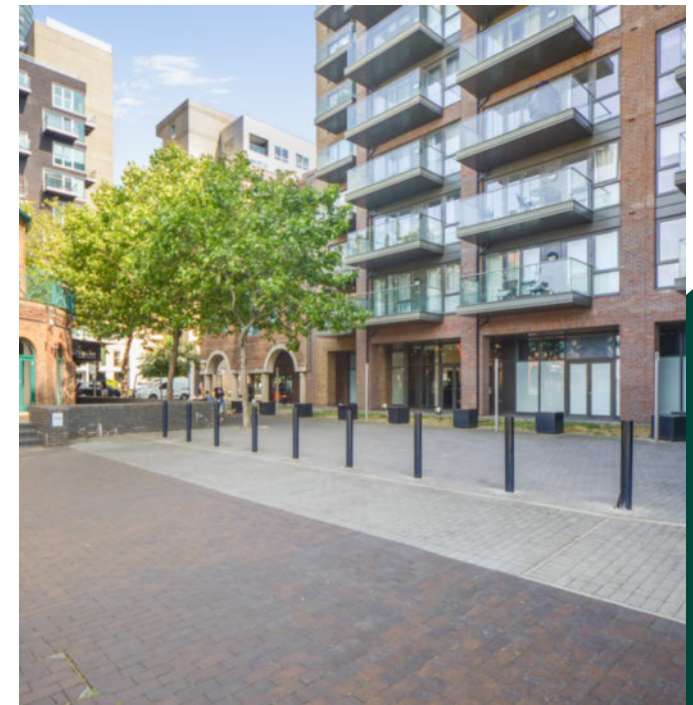
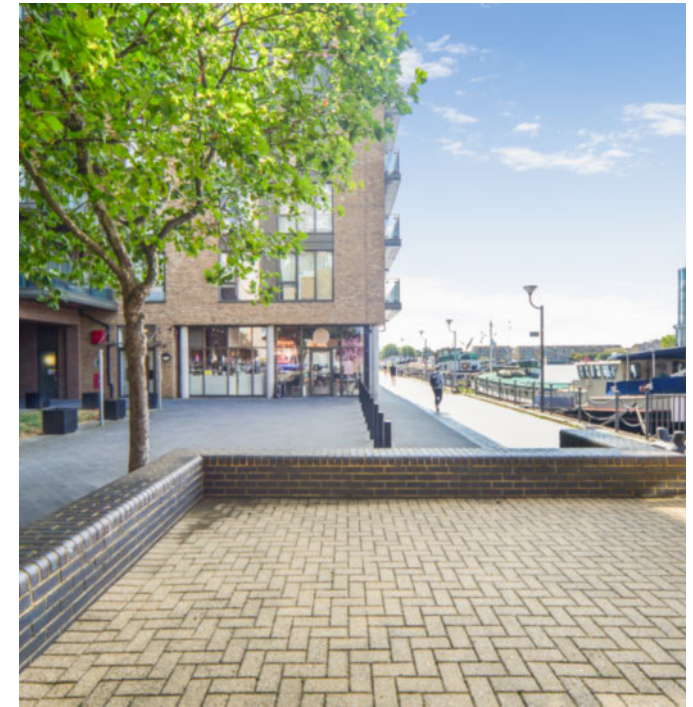
Turnberry Quay is located only 0.1 miles to Crossharbour DLR station and close to the local eateries and amenities on Pepper St. The property is approx. 0.7 miles from the centre of Canary Wharf with its plethora of shops, bars & eateries and

excellent transport links with its Jubilee and Elizabeth line stations.

Tenure: Leasehold (190 years remaining) **Local Authority:** Tower Hamlets

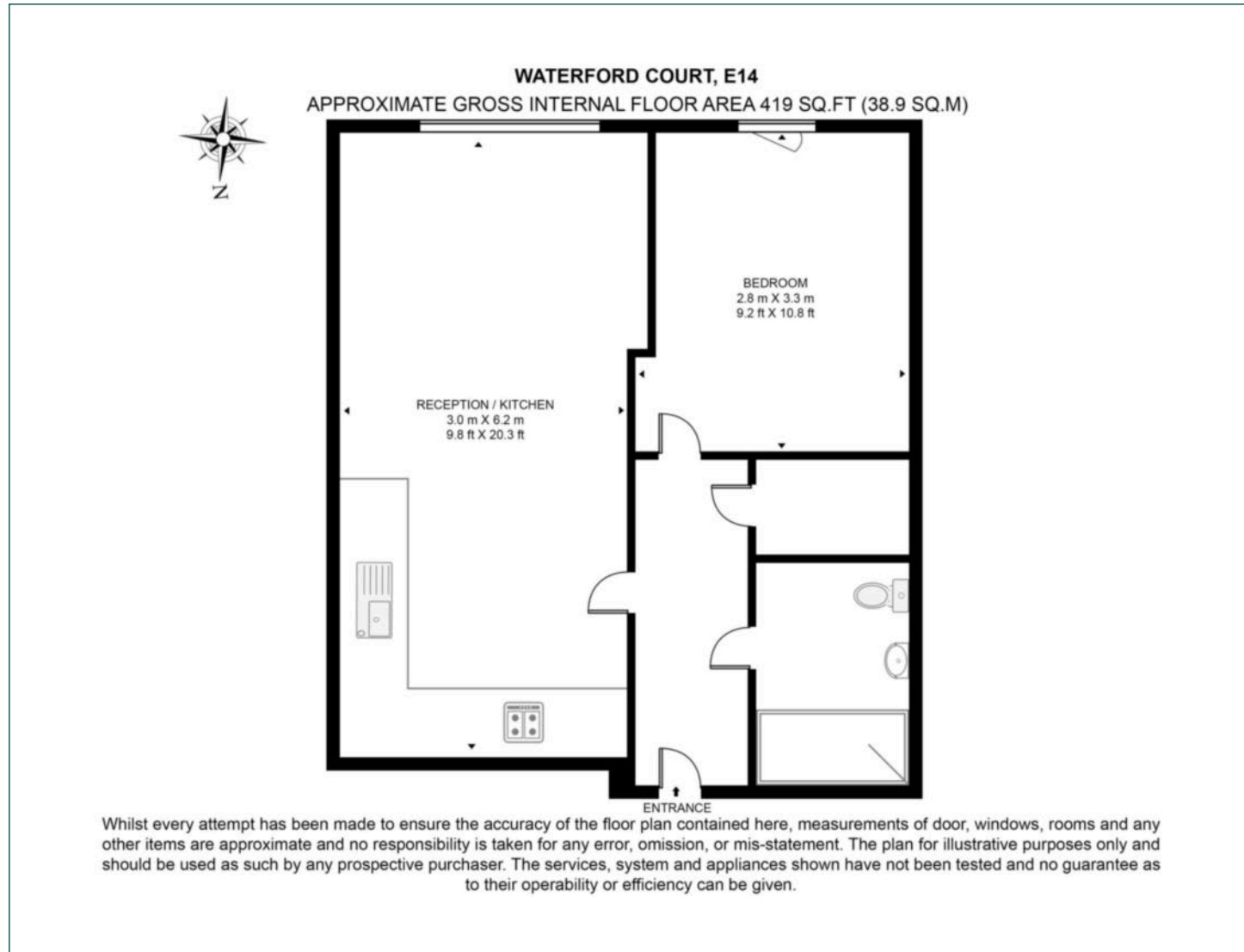
Ground Rent: £410 p.a. **Council Tax Band:** D

Service Charge: £2,500 p.a. **EPC:** B



Floorplan

419 sq ft | 38.9 sq m



Pan Peninsula

Pan Peninsula, 1 Millharbour, London, E14 9XP

Sales

020 7536 7901 | panp.sales@chaseevans.com

We're here to help.

IMPORTANT NOTICE - These particulars have been prepared in good faith and they are not intended to constitute part of an offer or contract. We have not performed a structural survey on this property and the services, appliances and specific fittings have not been tested. All photographs, measurements, floor plans and distances referred to are given as a guide and should not be relied upon.

chaseevans.com

 Chase Evans