



## Duckman Tower, Lincoln Plaza, Canary Wharf, E14

Price **£450 per week** | Furnished



# Duckman Tower, Lincoln Plaza, Canary Wharf, E14



Studio



1 Bathroom



1 Reception



Balcony



24-Hour Concierge



Fitness Suite



Communal Roof Garden



Winter Garden Sky Lounge



0.4 MI South Quay

Good-quality studio apartment with a balcony set within the Lincoln Plaza development in Canary Wharf. The property benefits from furnishings, a generous open-plan living room leading out to a balcony, fully integrated kitchen, wood flooring throughout, a spacious bedroom, generous built-in storage, a modern bathroom with a bathtub, comfort cooling and recessed lighting.

Lincoln plaza offers residents first class living in a location of international status and provides one of the most sophisticated landmarks on Canary Wharf's skyline. Boasting full leisure facilities

including a gym, swimming pool, jacuzzi, steam room, sauna and residents cinema as well as 24-hour concierge, a communal roof garden and winter garden sky lounge.

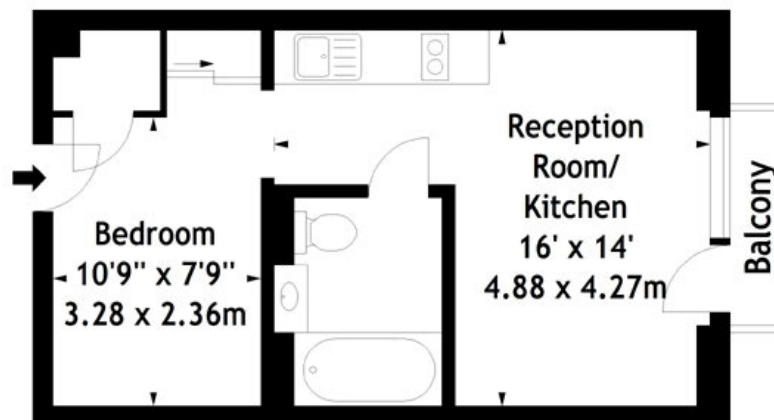
Locally, there is a good selection of restaurants, bars and supermarkets. Situated just 7mins walk from South Quay DLR station which makes commutes to Areas such as Bank achievable in just 14mins. Canary Wharf is walkable in just 12mins with it's array of amenities and Elizabeth Line services which see's Tottenham Court Road and Heathrow Airport reached in 11 and 39mins respectively.

<b>Local Authority:</b>	Tower Hamlets
<b>Council Tax Band:</b>	E
<b>EPC:</b>	B
<b>Security deposit:</b>	equivalent to 5 weeks' rent

# Floorplan

340 sq ft | 31.59 sq m

Lincoln Plaza,  
Duckman Tower, E14  
Approx. Gross Internal Area  
340 Sq Ft - 31.59 Sq M



## Sevntheenth Floor

Measured in accordance with RICS guidelines. Every attempt is made to ensure accuracy, however all measurements are approximate. This floor plan is for illustrative purposes only and is not to scale.

© Datography Ltd 2016

Photographs \* Floorplans \* Virtual Tours  
Tel: 0845 643 4401 [www.datography.com](http://www.datography.com)

### Pan Peninsula

Pan Peninsula, 1 Millharbour, London, E14 9XP

### Lettings

020 7536 7900 | [panp.lettings@chaseevans.com](mailto:panp.lettings@chaseevans.com)

## We're here to help.

IMPORTANT NOTICE - These particulars have been prepared in good faith and they are not intended to constitute part of an offer or contract. We have not performed a structural survey on this property and the services, appliances and specific fittings have not been tested. All photographs, measurements, floor plans and distances referred to are given as a guide and should not be relied upon.

[chaseevans.com](http://chaseevans.com)

 Chase Evans