

East Tower, Pan Peninsula Square, Canary Wharf, E14

Price **£700 per week** | Furnished



East Tower, Pan Peninsula Square, Canary Wharf, E14



2 Bedrooms



2 Bathrooms



1 Reception



Balcony



Gymnasium



Local Amenities



24-Hour Concierge

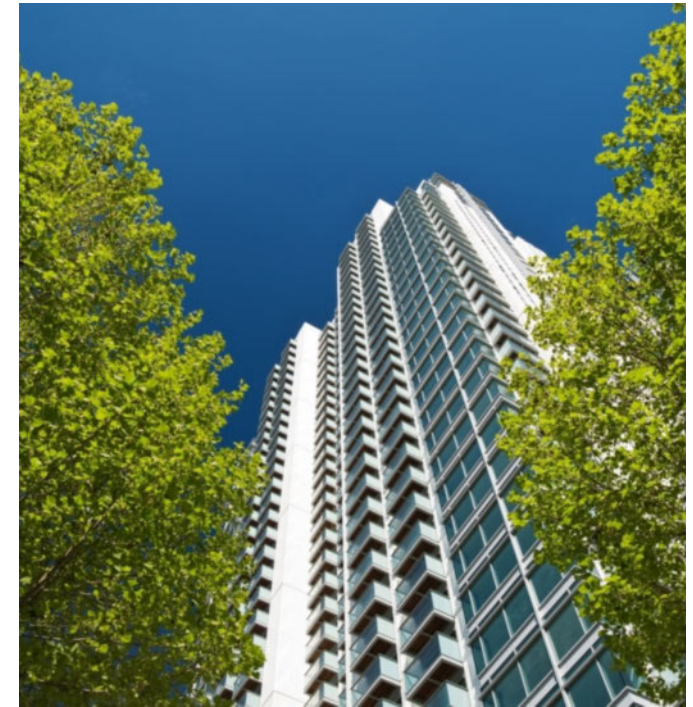


0.2 MI South Quay

A two bedroom, two bathroom apartment in Pan Peninsula's East Tower, Canary Wharf E14. This furnished apartment includes an inviting living space with dual-aspect views and unparalleled natural light, a fitted kitchen with integrated appliances, wood flooring, floor-to-ceiling windows, fitted wardrobe space, modern bathroom suite and a private west facing balcony offering views of the Canary Wharf skyline.

Residents will also have access to a 24-hour concierge, an onsite private cinema, residents' gymnasium and swimming pool.

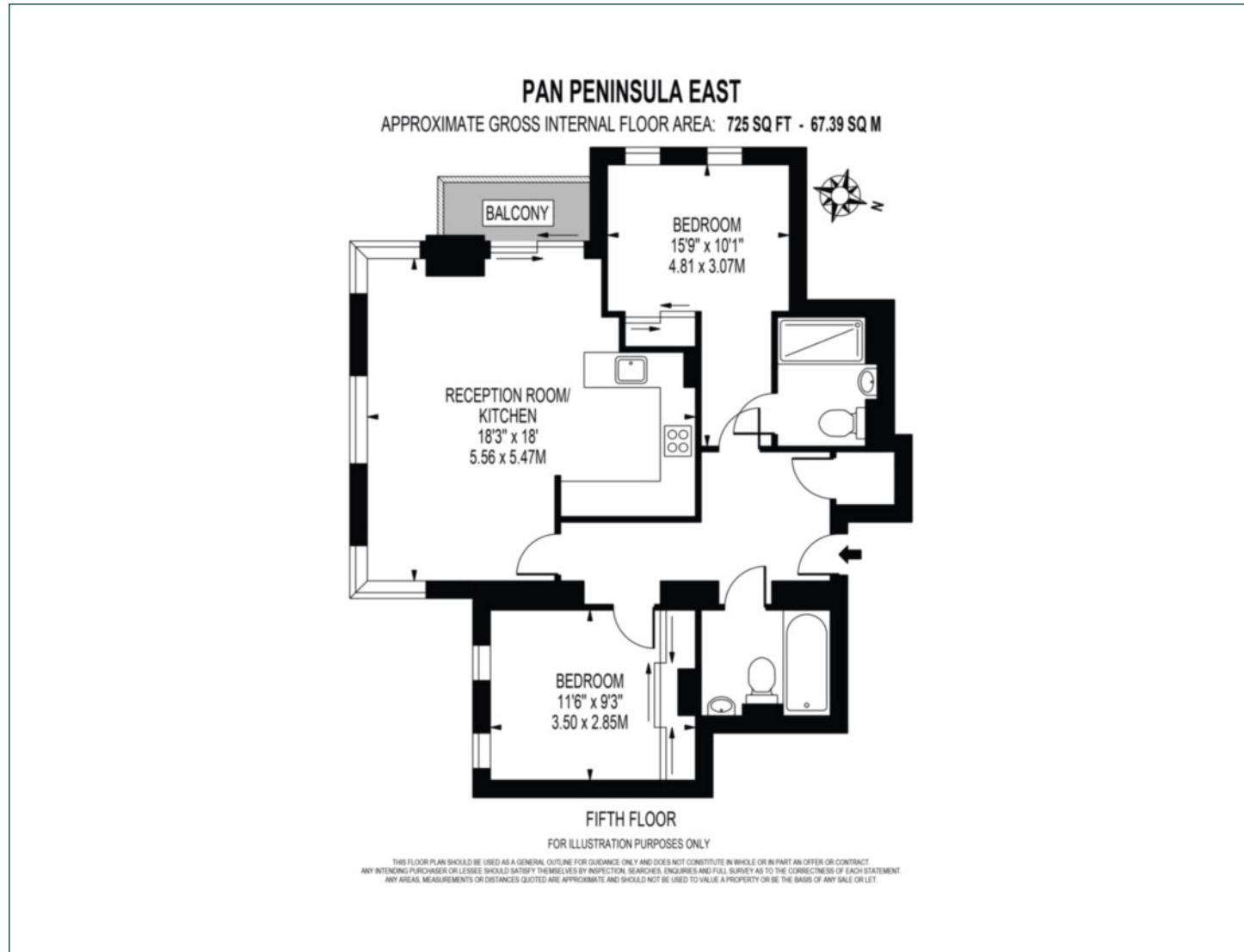
The development is within walking distance of Canary Wharf, providing access to transport links and a great selection of amenities including the Canary Wharf Shopping Centre. Situated just a 2-mins walk from South Quay DLR station which makes commutes to areas such as Bank achievable in just 14-mins. The development is also within walking distance of Canary Wharf Underground and the Elizabeth Line service for high-speed connection pan throughout the Capital.



Local Authority:	Tower Hamlets
Council Tax Band:	G
EPC:	B
Security deposit:	equivalent to 5 weeks' rent

Floorplan

688 sq ft | 67.39 sq m



Pan Peninsula

Pan Peninsula, 1 Millharbour, London, E14 9XP

Lettings

020 7536 7900 | panp.lettings@chaseevans.co.uk

We're here to help.

IMPORTANT NOTICE - These particulars have been prepared in good faith and they are not intended to constitute part of an offer or contract. We have not performed a structural survey on this property and the services, appliances and specific fittings have not been tested. All photographs, measurements, floor plans and distances referred to are given as a guide and should not be relied upon.

chaseevans.com

 Chase Evans