



Discovery Dock Apartments East, South Quay Square, Canary Wharf, E14

Asking price **£615,000** | Leasehold



Discovery Dock Apartments East, South Quay Square, Canary Wharf, E14



2 Bedrooms



2 Bathrooms



1 Reception



Balcony



Local Amenities



24-Hour Concierge



0.2 MI South Quay

A well presented two bedroom, two bathroom property set in a modern development with a balcony and parking located by South Dock and within easy reach of Canary Wharf.

Features include a large living room with wood flooring, recessed lighting, a semi open plan kitchen and a private balcony. The main bedroom benefits from a walk in wardrobe and an en suite and there is a family bathroom with contemporary fittings.

Residents have the benefit of 24-hour concierge

and a gymnasium and swimming pool. The property is close to the many eateries and amenities of South Quay and only 0.5 miles from Canary Wharf and its excellent selection of shops and services. The local area has excellent transport links with South Quay DLR being only 0.2 miles away and Canary Wharf Jubilee and Elizabeth line station 0.5 miles.

Tenure: Tower Hamlets

Local Authority: Tower Hamlets

Ground Rent: £500 p.a.

Council Tax Band: E

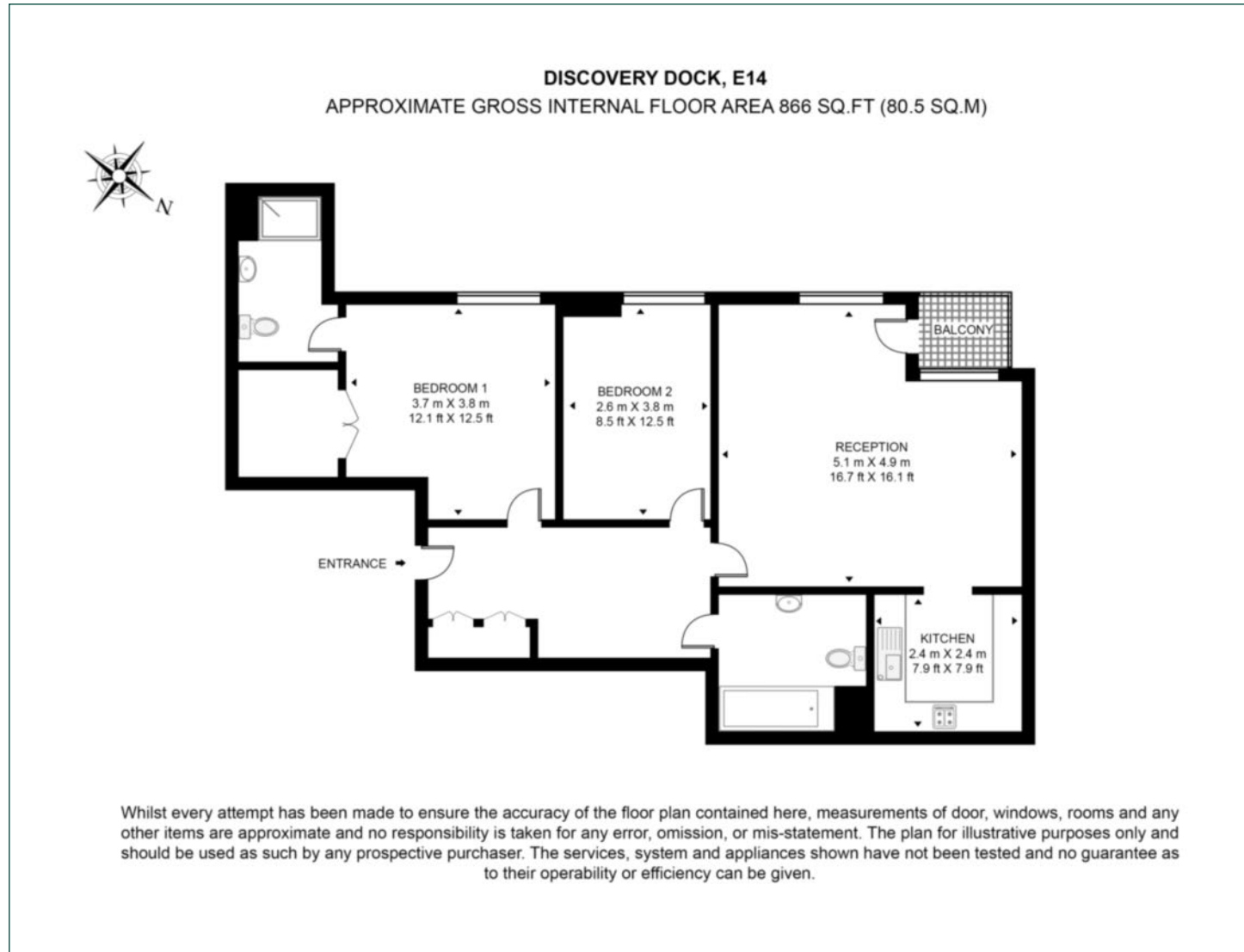
Service Charge: £8,000 p.a.

EPC: B



Floorplan

866 sq ft | 80.5 sq m



Pan Peninsula

Pan Peninsula, 1 Millharbour, London, E14 9XP

Sales

020 7536 7901 | panp.sales@chaseevans.com

We're here to help.

IMPORTANT NOTICE - These particulars have been prepared in good faith and they are not intended to constitute part of an offer or contract. We have not performed a structural survey on this property and the services, appliances and specific fittings have not been tested. All photographs, measurements, floor plans and distances referred to are given as a guide and should not be relied upon.

chaseevans.com

 Chase Evans