



Landmark East Tower, Canary Wharf, E14

Asking price **£439,950** | Leasehold



Landmark East Tower, Canary Wharf, E14

-  1 Bedroom
-  1 Bathroom
-  1 Reception
-  Balcony
-  Dock Views
-  Local Amenities
-  Fitness Facilities
-  24-Hour Concierge
-  0.1 MI Heron Quays

A large one bedroom apartment with docks views and a private balcony set in a modern development located within easy reach of Canary Wharf E14.

The accommodation comprises a dual-aspect living area extending onto a generous balcony with views towards Canary Wharf's South dock, an open-plan kitchen with integrated appliances, a sizable bedroom with a built-in wardrobe and a family-size bathroom. The interior features wood flooring, comfort cooling, floor-to-ceiling glazing, modern appliances and bathroom ware and plenty of storage space.

The Landmark is a sought-after development with 24-hour concierge and onsite fitness facilities and is well positioned for access into Canary Wharf. There are excellent transport options close by: Heron Quays DLR (0.3 miles), Canary Wharf Jubilee line station (0.4 miles) and Canary Wharf Elizabeth line station (0.6 miles)

Tenure:	Leasehold (985 years remaining)	Local Authority:	Tower Hamlets
Ground Rent:	£500	Council Tax Band:	E
Service Charge:	£4,300	EPC:	B

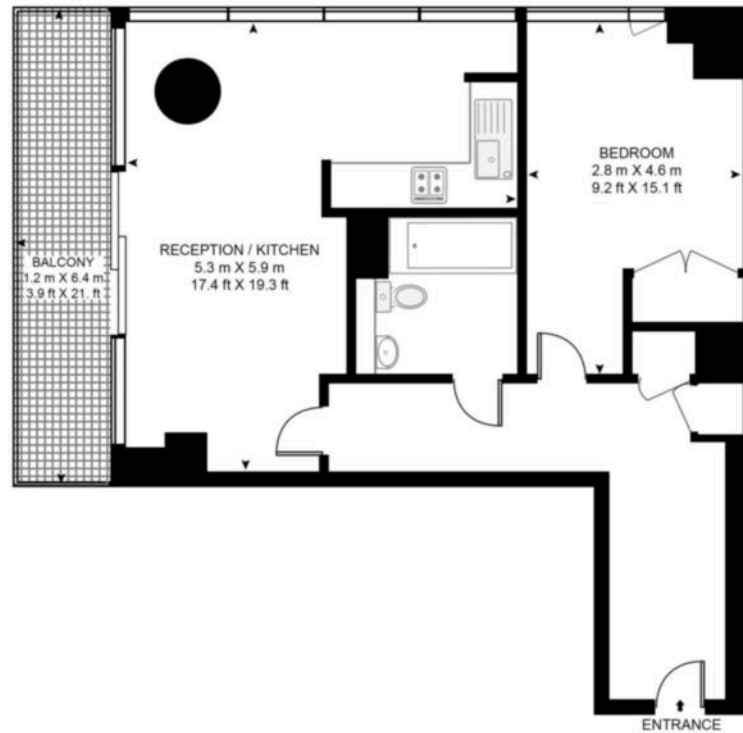


Floorplan

562 sq ft | 52.2 sq m



LANDMARK EAST, 24 MARSH WALL, E14
APPROXIMATE GROSS INTERNAL FLOOR AREA 562 SQ.FT (52.2 SQ.M)



Whilst every attempt has been made to ensure the accuracy of the floor plan contained here, measurements of door, windows, rooms and any other items are approximate and no responsibility is taken for any error, omission, or mis-statement. The plan for illustrative purposes only and should be used as such by any prospective purchaser. The services, system and appliances shown have not been tested and no guarantee as to their operability or efficiency can be given.

Sales

We're here to help.

IMPORTANT NOTICE - These particulars have been prepared in good faith and they are not intended to constitute part of an offer or contract. We have not performed a structural survey on this property and the services, appliances and specific fittings have not been tested. All photographs, measurements, floor plans and distances referred to are given as a guide and should not be relied upon.

chaseevans.com

 Chase Evans