



## East Tower, Pan Peninsula Square, Canary Wharf, E14

Asking price **£425,000** | Leasehold





# East Tower, Pan Peninsula Square, Canary Wharf, E14



1 Bedroom



1 Bathroom



1 Reception



Balcony



Gymnasium



Local Amenities



24-Hour Concierge



0.1 MI South Quay

A stunning one bedroom apartment with dock views set on the 32nd floor of Pan Peninsula's East Tower. Features include a private balcony accessed from the living room & a well equipped stylish kitchen, wood flooring, floor to ceiling glazing, a large double bedroom with an integrated wardrobe and a luxurious bathroom with contemporary fittings.

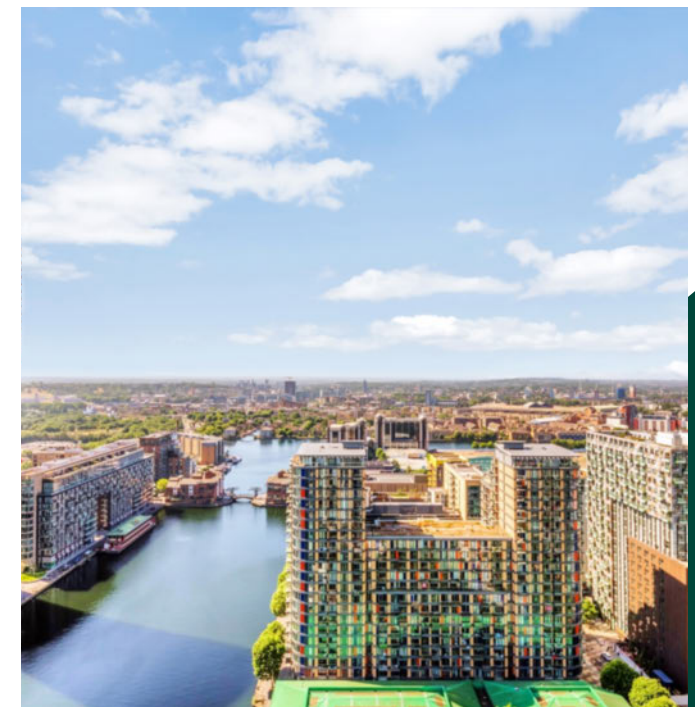
Residents benefit from an on-site 24-hour concierge service, an extensive leisure complex including a 16m swimming pool and split level gym plus exclusive use of a designer cinema. This

property is also situated 8mins walk from both South Quay DLR which makes commutes to Areas such as Bank achievable in just 14mins. Canary Wharf Underground, which operate a range of services across the capital which currently include DLR and Jubilee line and the high speed Elizabeth Line is also just 8mins away.

**Tenure:** Leasehold (982 years remaining) **Local Authority:** Tower Hamlets

**Ground Rent:** £500 p.a. **Council Tax Band:** F

**Service Charge:** £6,300 p.a. **EPC:** B

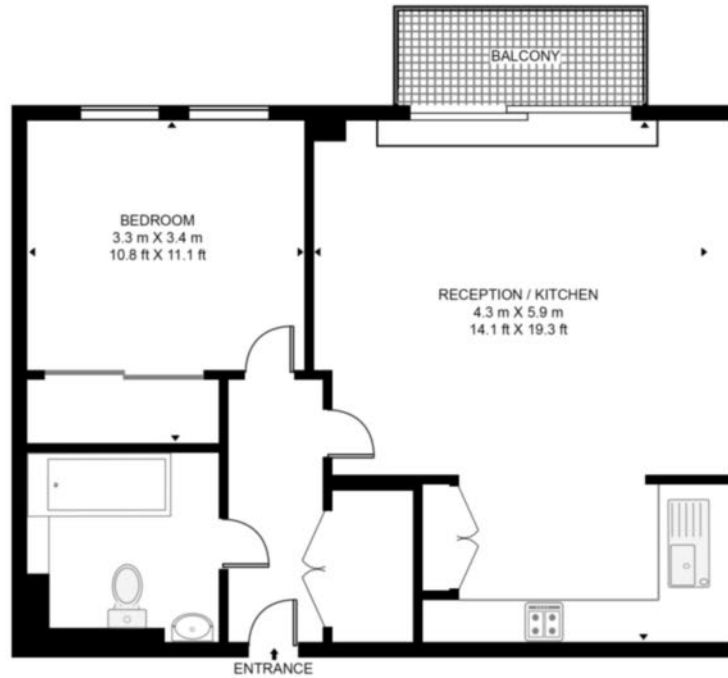


# Floorplan

482 sq ft | 44.8 sq m



**EAST TOWER PAN PENINSULA, E14**  
APPROXIMATE GROSS INTERNAL FLOOR AREA 482 SQ.FT (44.8 SQ.M)



Whilst every attempt has been made to ensure the accuracy of the floor plan contained here, measurements of door, windows, rooms and any other items are approximate and no responsibility is taken for any error, omission, or mis-statement. The plan for illustrative purposes only and should be used as such by any prospective purchaser. The services, system and appliances shown have not been tested and no guarantee as to their operability or efficiency can be given.

Sales

We're here to help.

IMPORTANT NOTICE - These particulars have been prepared in good faith and they are not intended to constitute part of an offer or contract. We have not performed a structural survey on this property and the services, appliances and specific fittings have not been tested. All photographs, measurements, floor plans and distances referred to are given as a guide and should not be relied upon.

[chaseevans.com](http://chaseevans.com)

 Chase Evans