

## Cobalt Point, Lantern's Court, Canary Wharf, E14

Asking price **£389,950** | Leasehold



# Cobalt Point, Lantern's Court, Canary Wharf, E14



1 Bedroom



1 Bathroom



1 Reception



Parking



Private Balcony



Residents' Gym



24-Hour Concierge



Walking to Canary Wharf Shopping Centre



0.3 MI South Quay

A one bedroom apartment with a balcony and parking set in Cobalt Point, a modern development located in the heart of Canary Wharf E14. The property comprises a bright living area with wood flooring, recessed spot lighting and full-height window opening onto a private balcony, an open plan kitchen with fully integrated appliances, a spacious bedroom with built-in wardrobes and a family bathroom with bathtub.

Residents of Cobalt Point benefit from a gymnasium and a 24-hour concierge service. The property is situated close to Millwall Dock, providing

the convenience of local shops and amenities of Millharbour and Canary Wharf. It locates only 0.3 miles from South Quay station and 0.5 miles from Canary Wharf underground station served by DLR, Jubilee and Elizabeth lines, facilitating commutes to areas such as Bank, Tottenham Court Road and Heathrow Airport.



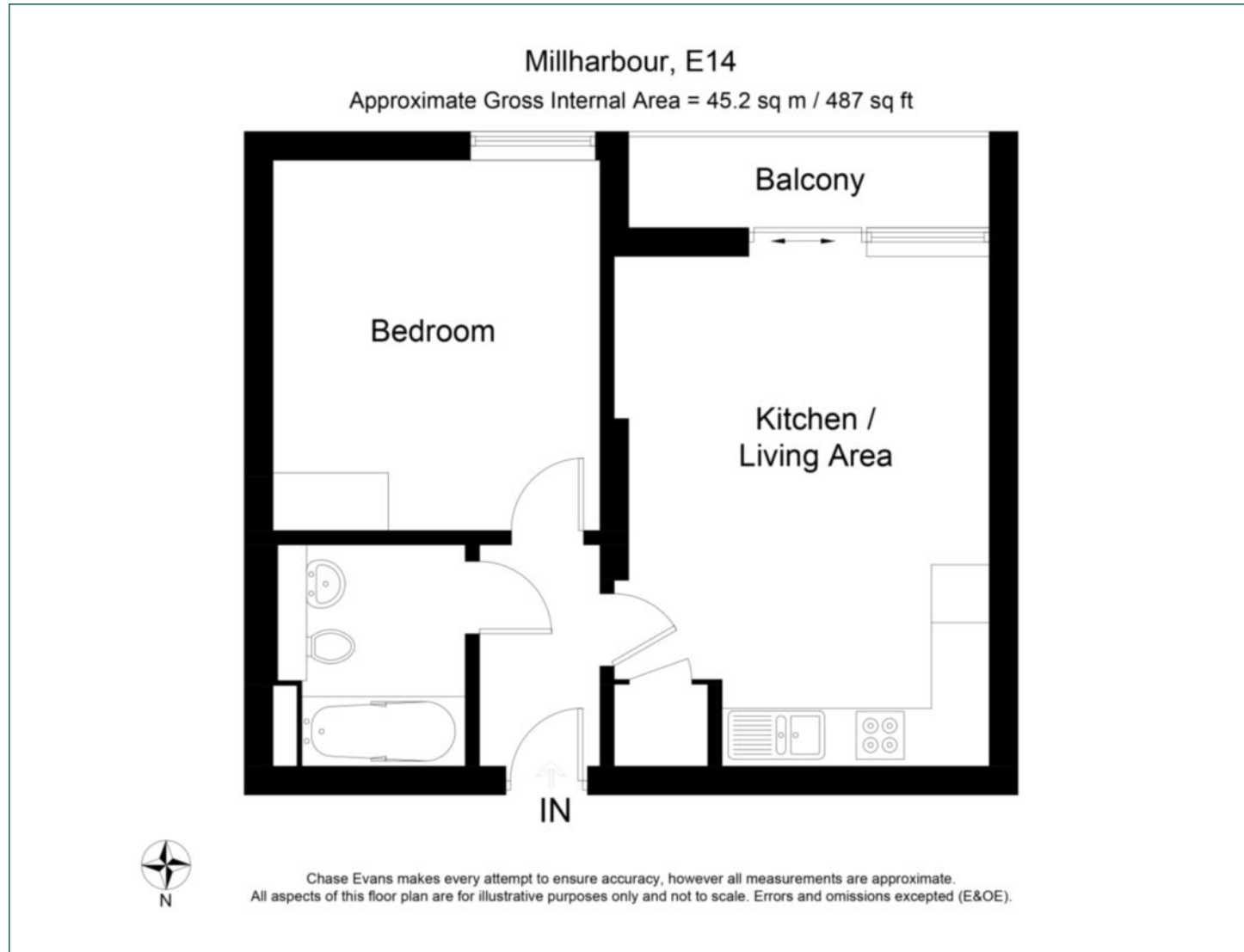
**Tenure:** Leasehold (982 years remaining) **Local Authority:** Tower Hamlets

**Ground Rent:** £350 p.a. **Council Tax Band:** D

**Service Charge:** Approx. £2,800 p.a. **EPC:** B

# Floorplan

487 sq ft | 45.2 sq m



## Pan Peninsula

Pan Peninsula, 1 Millharbour, London, E14 9XP

## Sales

020 7536 7901 | [panp.sales@chaseevans.com](mailto:panp.sales@chaseevans.com)

## We're here to help.

IMPORTANT NOTICE - These particulars have been prepared in good faith and they are not intended to constitute part of an offer or contract. We have not performed a structural survey on this property and the services, appliances and specific fittings have not been tested. All photographs, measurements, floor plans and distances referred to are given as a guide and should not be relied upon.

[chaseevans.com](https://www.chaseevans.com)