












North Boulevard, Baltimore Wharf, Canary Wharf, E14

Price **£525 per week** | Furnished



North Boulevard, Baltimore Wharf, Canary Wharf, E14

-  1 Bedroom
-  1 Bathroom
-  1 Reception
-  Balcony
-  Gymnasium
-  Swimming Pool
-  Communal Gardens
-  24-Hour Concierge
-  0.2 MI Crossharbour DLR

Modern one bedroom apartment set within Baltimore Wharf development, features a fully integrated open plan kitchen, full length windows wooden flooring, spacious bedroom with built in wardrobe, marble effect bathroom and a private balcony over looking communal grounds.

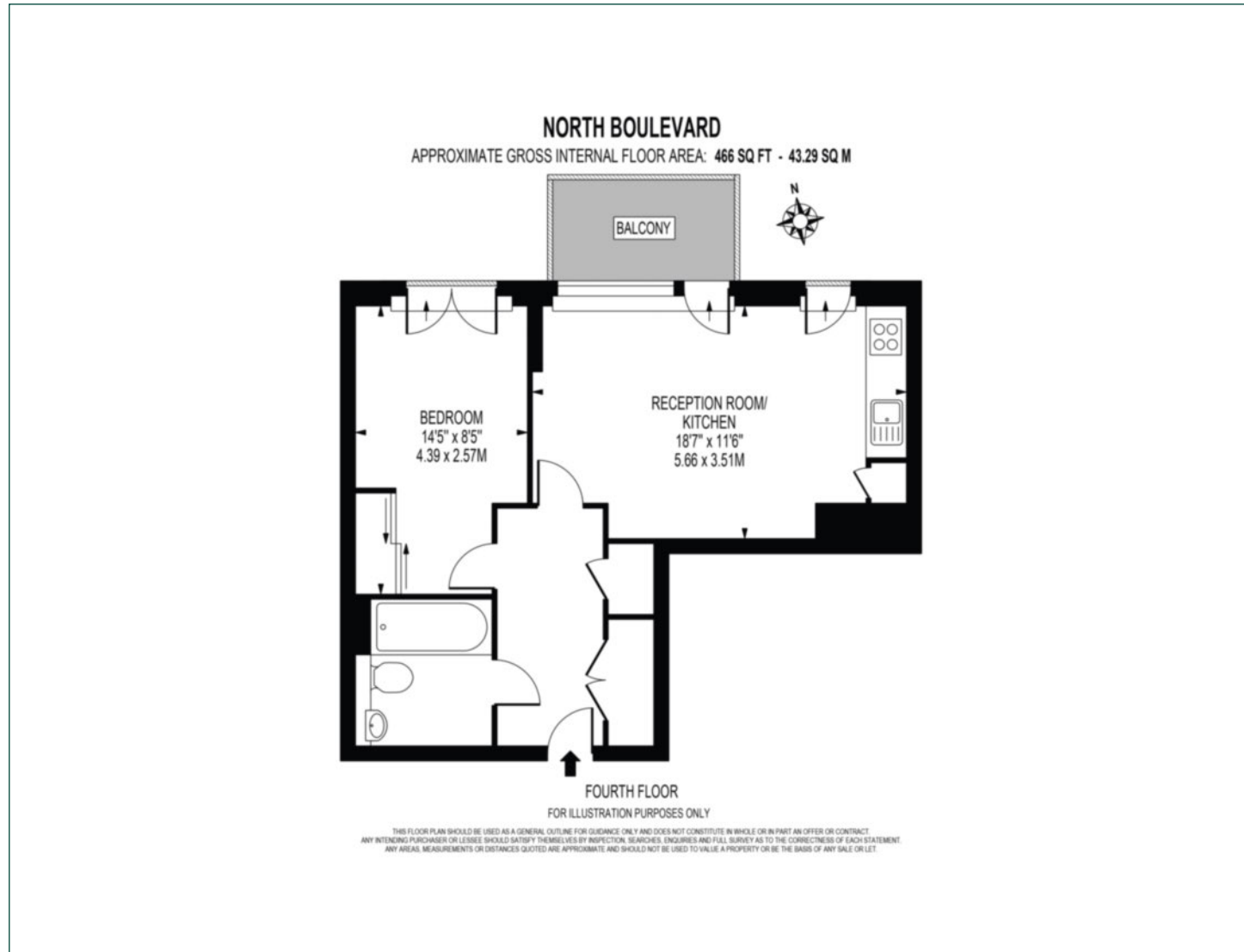
within walking distance of Canary Wharf's Underground station for DLR and Jubilee line services.

Residents will also have access to a 24-hour concierge service and an on-site gymnasium & swimming pool. There are several amenities located nearby including restaurants, bars and the Canary Wharf Shopping Centre. Baltimore Wharf is located 2 minutes walk from Crossharbour DLR stop and

Local Authority:	Tower Hamlets
Council Tax Band:	G
EPC:	C
Security deposit:	equivalent to 5 weeks' rent

Floorplan

458 sq ft | 42.6 sq m



Pan Peninsula

Pan Peninsula, 1 Millharbour, London, E14 9XP

Lettings

020 7536 7900 | panp.lettings@chaseevans.co.uk

We're here to help.

IMPORTANT NOTICE - These particulars have been prepared in good faith and they are not intended to constitute part of an offer or contract. We have not performed a structural survey on this property and the services, appliances and specific fittings have not been tested. All photographs, measurements, floor plans and distances referred to are given as a guide and should not be relied upon.

[chaseevans.com](https://www.chaseevans.com)