



Landmark Pinnacle, Marsh Wall, Canary Wharf, E14

Price **£950 per week** | Furnished



Landmark Pinnacle, Marsh Wall, Canary Wharf, E14



2 Bedrooms



2 Bathrooms



1 Reception



Gymnasium



Local Amenities



24-Hour Concierge



0.2 MI Heron Quays

Beautifully presented two bedroom, two bathroom, north west-facing riverside apartment with fantastic views of The Thames and the City within Landmark Pinnacle, a recent addition to the Canary Wharf's dramatic cityscape. The light-filled, open-plan kitchen/living area features floor to ceiling glazing, modern kitchen cabinetry, herringbone wood floors and a stylish breakfast island unit. The master bedroom has an en suite bathroom, and there is a further double bedroom and a family bathroom with smart fittings and fixtures. The apartment has generous storage with both bedrooms affording ample wardrobe space. Landmark Pinnacle offers a great range of facilities -

concierge services as well as access to a media room, private cinema, secluded and landscaped seating areas, gym and exercise studio, private dining room and a library. On the 75th floor is the fantastic roof terrace offering uninterrupted views of London. The apartment is close to Heron Quays DLR. Landmark Pinnacle is located a short walk away from a wealth of amenities and transport links at Canary Wharf including the Canary Wharf Shopping Centre, Canary Wharf Pier, Canary Wharf Underground Station (Jubilee Line) and Canary Wharf Station for the high-speed Elizabeth line.

Local Authority:

Tower Hamlets

Council Tax Band:

F

EPC:

B

Security deposit:

equivalent to 5 weeks' rent

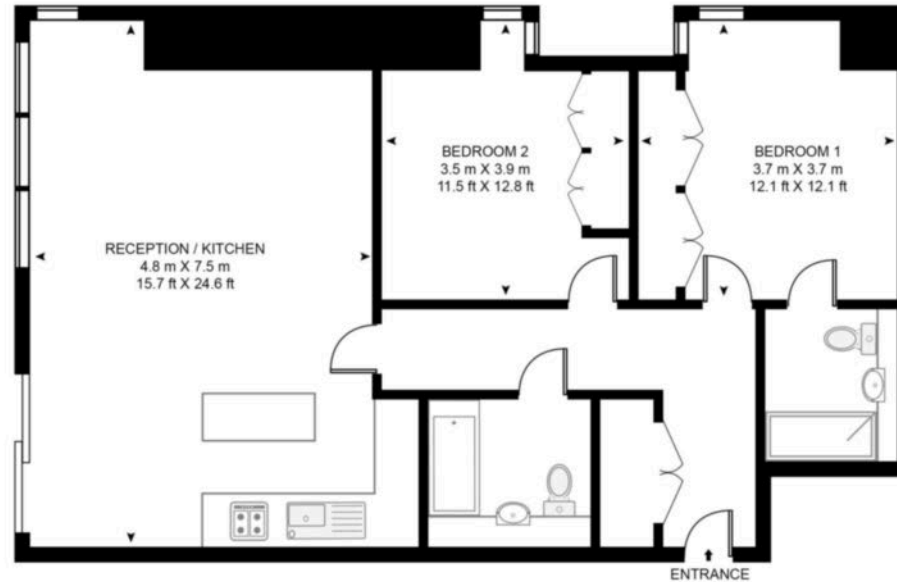


Floorplan

880 sq ft | 81.8 sq m



LANDMARK PINNACLE, 10 MARSH WALL, E14
APPROXIMATE GROSS INTERNAL FLOOR AREA 880 SQ.FT (81.8 SQ.M)



Whilst every attempt has been made to ensure the accuracy of the floor plan contained here, measurements of door, windows, rooms and any other items are approximate and no responsibility is taken for any error, omission, or mis-statement. The plan for illustrative purposes only and should be used as such by any prospective purchaser. The services, system and appliances shown have not been tested and no guarantee as to their operability or efficiency can be given.

Pan Peninsula

Pan Peninsula, 1 Millharbour, London, E14 9XP

Lettings

020 7536 7900 | panp.lettings@chaseevans.com

We're here to help.

IMPORTANT NOTICE - These particulars have been prepared in good faith and they are not intended to constitute part of an offer or contract. We have not performed a structural survey on this property and the services, appliances and specific fittings have not been tested. All photographs, measurements, floor plans and distances referred to are given as a guide and should not be relied upon.

chaseevans.com