



East Tower, Pan Peninsula Square, Canary Wharf, E14

Asking price **£425,000** | Leasehold



East Tower, Pan Peninsula Square, Canary Wharf, E14



1 Bedroom



1 Bathroom



1 Reception



Balcony



Cinema Room



Local Amenities



24-Hour Concierge



0.2 MI South Quay

A one bedroom apartment set on the 11th floor of the East Tower of Pan Peninsula, Canary Wharf E14.

Features include a dual aspect living room with wood flooring and full height glazing, a private balcony, an open plan kitchen, a double bedroom with integrated wardrobes and a bathroom with marble fittings.

Residents have access to a 24-hour concierge, an onsite private cinema, residents' gymnasium and swimming pool. The development is within walking distance of Canary Wharf, providing access to

transport links and a great selection of amenities including the Canary Wharf Shopping Centre.

Situated just a 2-mins walk from South Quay DLR station which makes commutes to areas such as Bank achievable in just 14-mins. The development is also within walking distance of Canary Wharf Underground and the Elizabeth Line service for high-speed connection pan throughout the Capital.

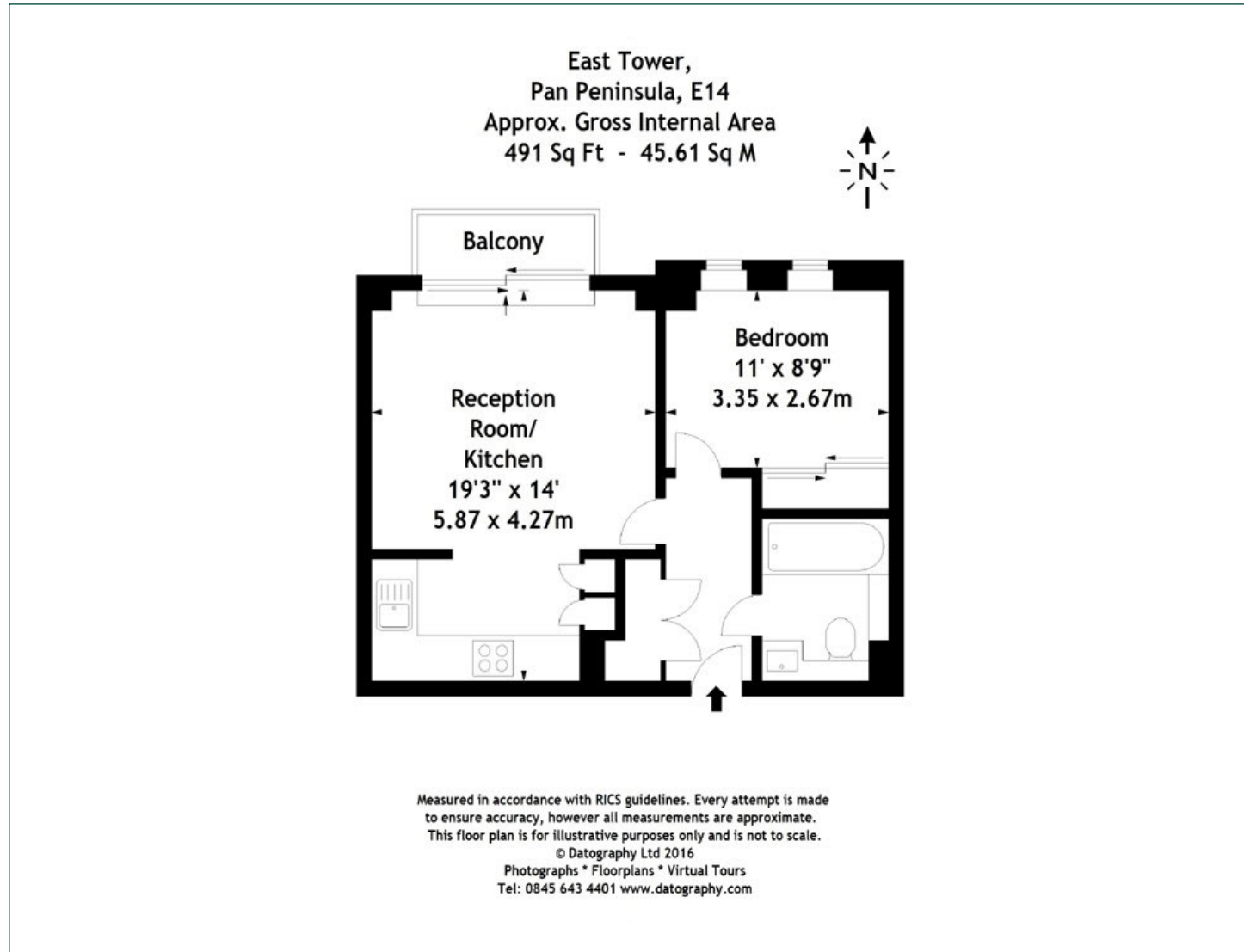
Tenure: Leasehold (982 years remaining) **Local Authority:** Tower Hamlets

Ground Rent: £500 p.a. **Council Tax Band:** F

Service Charge: £6,250 p.a. **EPC:** B

Floorplan

491 sq ft | 45.61 sq m



Pan Peninsula

Pan Peninsula, 1 Millharbour, London, E14 9XP

Sales

020 7536 7900 | panp.lettings@chaseevans.co.uk

We're here to help.

IMPORTANT NOTICE - These particulars have been prepared in good faith and they are not intended to constitute part of an offer or contract. We have not performed a structural survey on this property and the services, appliances and specific fittings have not been tested. All photographs, measurements, floor plans and distances referred to are given as a guide and should not be relied upon.

chaseevans.com

 Chase Evans