



Landmark West, Marsh Wall, Canary Wharf, E14

Price **£675 per week** | Furnished



Landmark West, Marsh Wall, Canary Wharf, E14



2 Bedrooms



2 Bathrooms



1 Reception



Balcony



Gymnasium



Local Amenities



24-Hour Concierge



0.5 MI Canary Wharf

A spacious two bedroom, two bathroom apartment in the modern Landmark development. This apartment includes a spacious living and dining area with dual-aspect views, fitted kitchen with integrated appliances, wood flooring, floor-to-ceiling windows, fitted bedroom storage, master en suite, stylish bathroom suite and a private balcony.

Residents have the benefit of 24-hour concierge, cycle storage and a gymnasium. The development is located close to the heart of Canary Wharf, providing access to a huge range of attractions and amenities including the Canary Wharf Shopping

Centre, supermarkets, bars and restaurants.

This property is also situated only 11 minutes walk from Canary Wharf Underground and South Quay DLR stations which operates a range of services across the capital.

Local Authority:

Tower Hamlets

Council Tax Band:

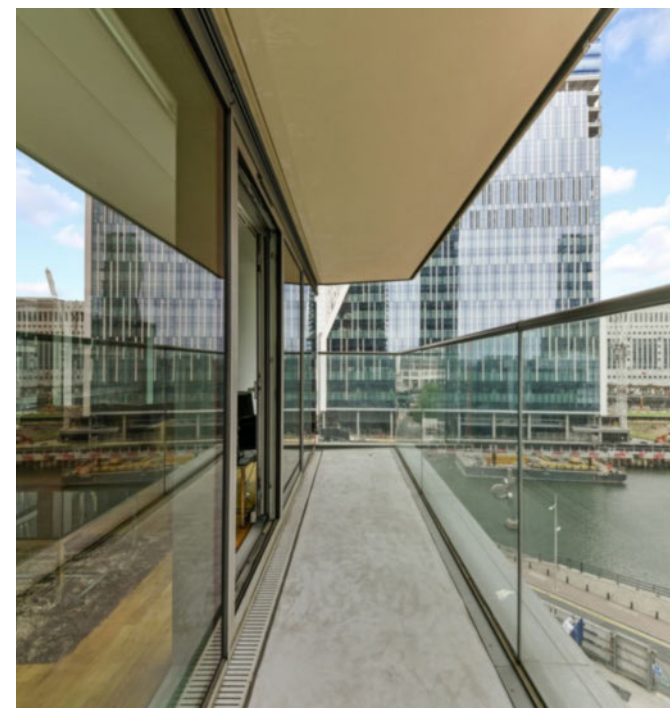
E

EPC:

G

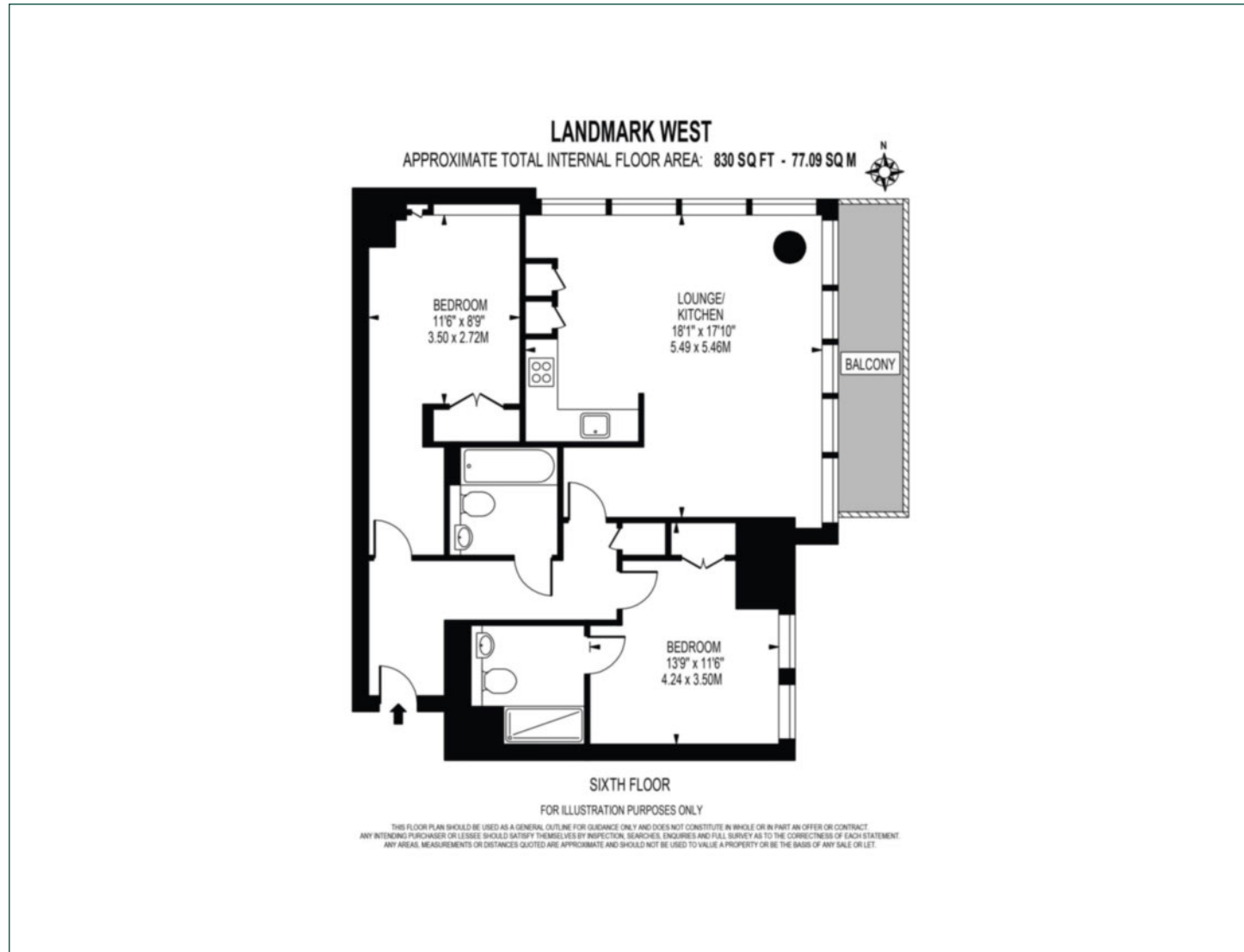
Security deposit:

equivalent to 5 weeks' rent



Floorplan

830 sq ft | 77.09 sq m



Pan Peninsula

Pan Peninsula, 1 Millharbour, London, E14 9XP

Lettings

020 7536 7900 | panp.lettings@chaseevans.com

We're here to help.

IMPORTANT NOTICE - These particulars have been prepared in good faith and they are not intended to constitute part of an offer or contract. We have not performed a structural survey on this property and the services, appliances and specific fittings have not been tested. All photographs, measurements, floor plans and distances referred to are given as a guide and should not be relied upon.

[chaseevans.com](https://www.chaseevans.com)