



## Horizons Tower, Yabsley Street, Canary Wharf, E14

Price **£770 per week** | Furnished



# Horizons Tower, Yabsley Street, Canary Wharf, E14



3 Bedrooms



2 Bathrooms



1 Reception



Gymnasium



24-Hour Concierge



0.3 MI Blackwall

A stunning three bedroom, two bathroom apartment within Horizons Tower, a modern development near the heart of Canary Wharf, E14. The apartment comprises a spacious open plan living area, fitted kitchen with integrated Siemens appliances, wood flooring, floor-to-ceiling windows, fitted bedroom storage, master en suite, modern bathroom décor, and a spacious private balcony with an amazing view of the River Thames and the O2.

Residents also have access to a 24-hour concierge service and a private gymnasium. There are several

amenities located nearby including restaurants, shops, and a bar. The development is located 0.3 miles from Blackwall DLR station and 0.7 miles from Canary Wharf station (Jubilee Line), providing an excellent transport link for commuting to London City Airport and other destinations within the Capital.



**Local Authority:**

Tower Hamlets

**Council Tax Band:**

G

**EPC:**

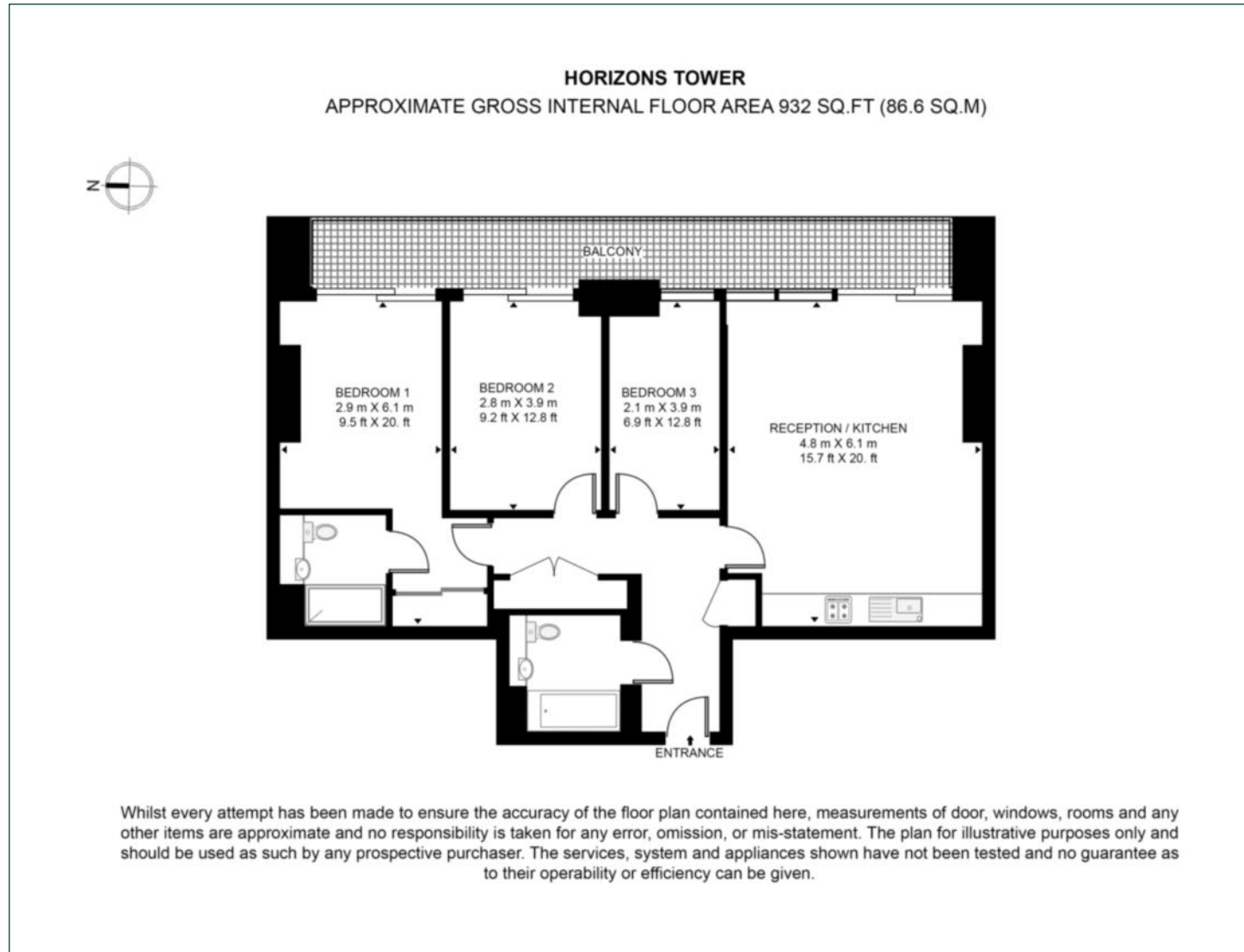
B

**Security deposit:**

equivalent to 5 weeks' rent

# Floorplan

926 sq ft | 86.6 sq m



## Pan Peninsula

Pan Peninsula, 1 Millharbour, London, E14 9XP

## Lettings

020 7536 7900 | [panp.lettings@chaseevans.co.uk](mailto:panp.lettings@chaseevans.co.uk)

## We're here to help.

IMPORTANT NOTICE - These particulars have been prepared in good faith and they are not intended to constitute part of an offer or contract. We have not performed a structural survey on this property and the services, appliances and specific fittings have not been tested. All photographs, measurements, floor plans and distances referred to are given as a guide and should not be relied upon.

[chaseevans.com](http://chaseevans.com)