



Constable House, Canary Central, Cassilis Road E14

Asking price **£575,000** | Leasehold



Constable House, Canary Central, Cassilis Road E14



2 Bedrooms



2 Bathrooms



1 Reception



Balcony



Gymnasium



Local Amenities



24-Hour Concierge



0.3 MI South Quay

A recently refurbished two bedroom, two bathroom apartment set on the top floor of a purpose built development located close to the local shops and amenities of South Quay and within easy reach of Canary Wharf.

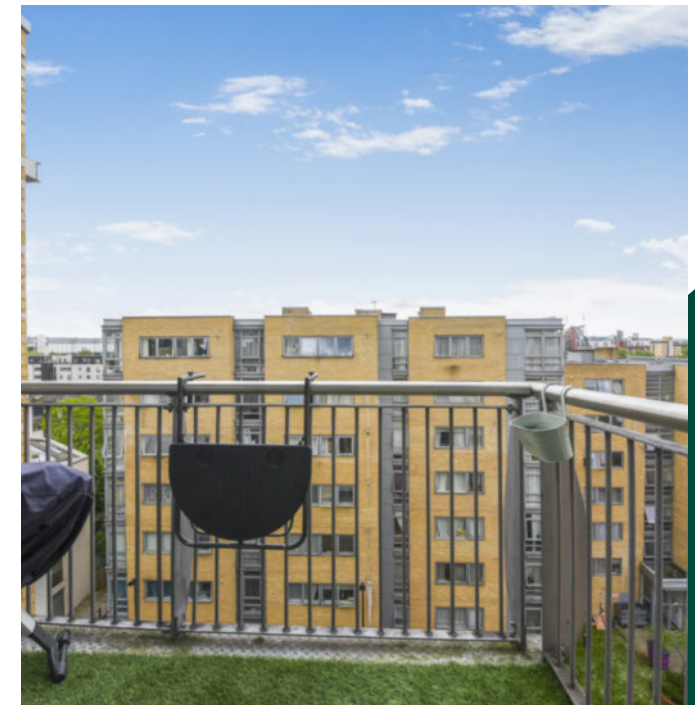
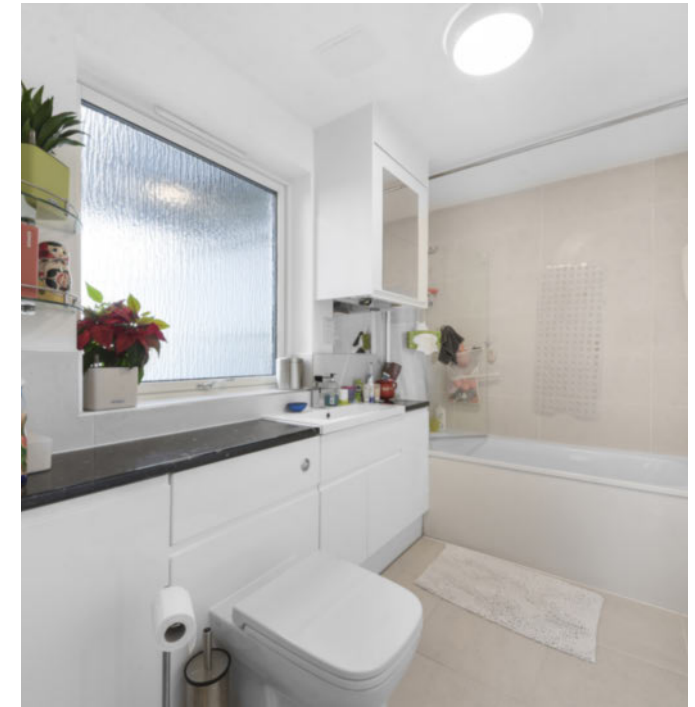
Features include a bright living room with wood flooring, a private balcony and an open plan kitchen. The bedrooms are both double in size with the main bedroom benefiting from an en-suite shower room, the family bathroom has contemporary fittings and there is ample storage.

The development has 24-hour concierge and a gym and pool. Constable House benefits from a close proximity to the thriving Canary Wharf centre for an array of fantastic bars, restaurants and shops. South Quay DLR Station is also nearby offering great links into the City.

Tenure: Leasehold (975 years remaining) **Local Authority:** Tower Hamlets

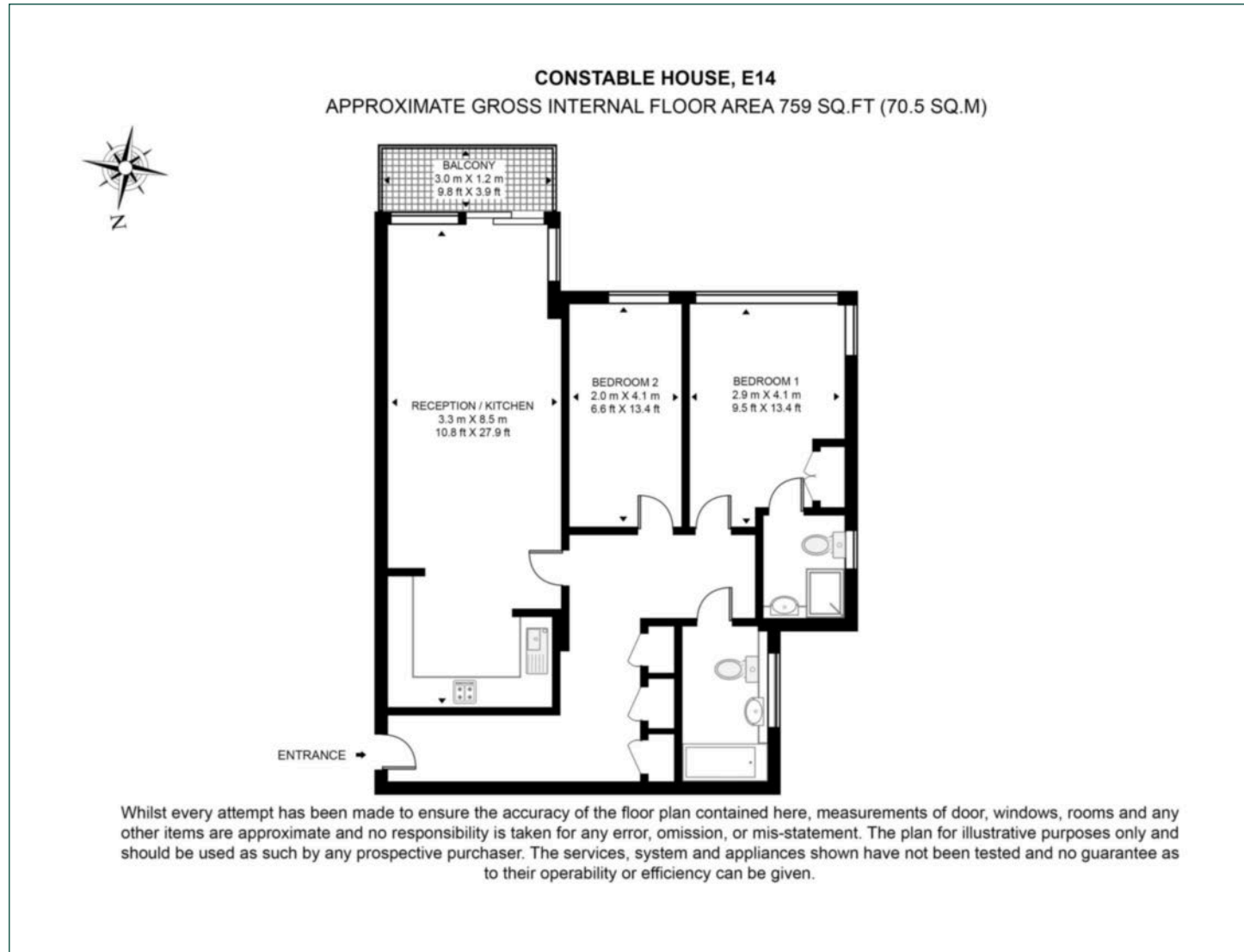
Ground Rent: £350 p.a. **Council Tax Band:** E

Service Charge: £4,400 p.a. **EPC:** C



Floorplan

759 sq ft | 70.5 sq m



Pan Peninsula

Pan Peninsula, 1 Millharbour, London, E14 9XP

Sales

020 7536 7901 | panp.sales@chaseevans.com

We're here to help.

IMPORTANT NOTICE - These particulars have been prepared in good faith and they are not intended to constitute part of an offer or contract. We have not performed a structural survey on this property and the services, appliances and specific fittings have not been tested. All photographs, measurements, floor plans and distances referred to are given as a guide and should not be relied upon.

chaseevans.com

 Chase Evans