

East Tower, Pan Peninsula Square, Canary Wharf, E14

Price **£425 per week** | Furnished



East Tower, Pan Peninsula Square, Canary Wharf, E14



Studio



1 Bathroom



1 Reception



Balcony



24-Hour Concierge



Gym & Pool



Near Canary Wharf Amenities

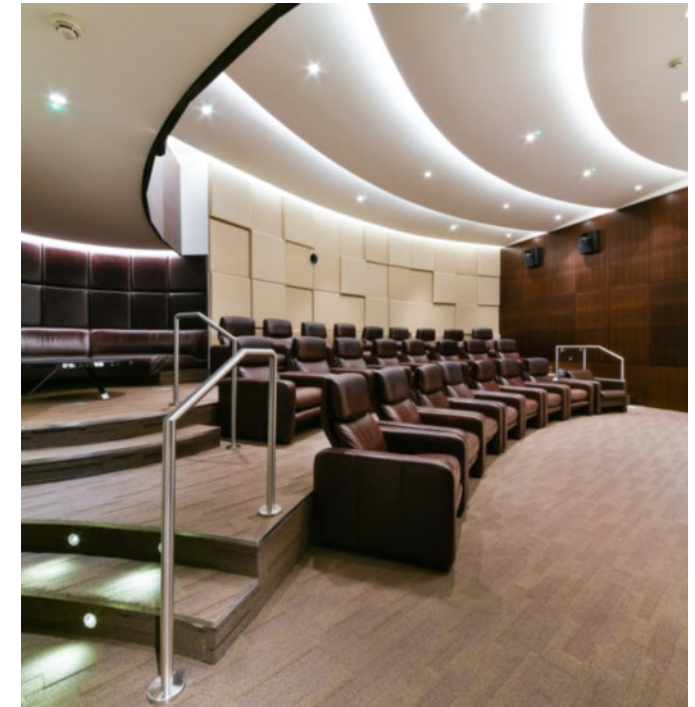


0.1 MI South Quay

Studio suite with a balcony set in Pan Peninsula's East Tower, E14 within walking distance of Canary Wharf. Including a bright, inviting living / sleeping area, fitted & integrated kitchen, full length windows, tiled flooring, comfort cooling, stylish marble bathroom suite and a private south facing balcony offering spectacular views.

Facilities include exclusive access to a cinema room, extensive leisure complex and 24 Hour concierge service. The development is within walking distance of Canary Wharf, providing access to transport links and a great selection of amenities including

restaurants, cafes, bars and the Canary Wharf Shopping Centre. Situated just 0.1 miles from South Quay DLR station which makes commutes to areas such as Bank achievable in just 14 minutes. The development is also within walking distance of Canary Wharf Underground and Station, providing access to transport links including the (Elizabeth Line) service for high speed connection around the capital.



Local Authority:

Tower Hamlets

Council Tax Band:

E

EPC:

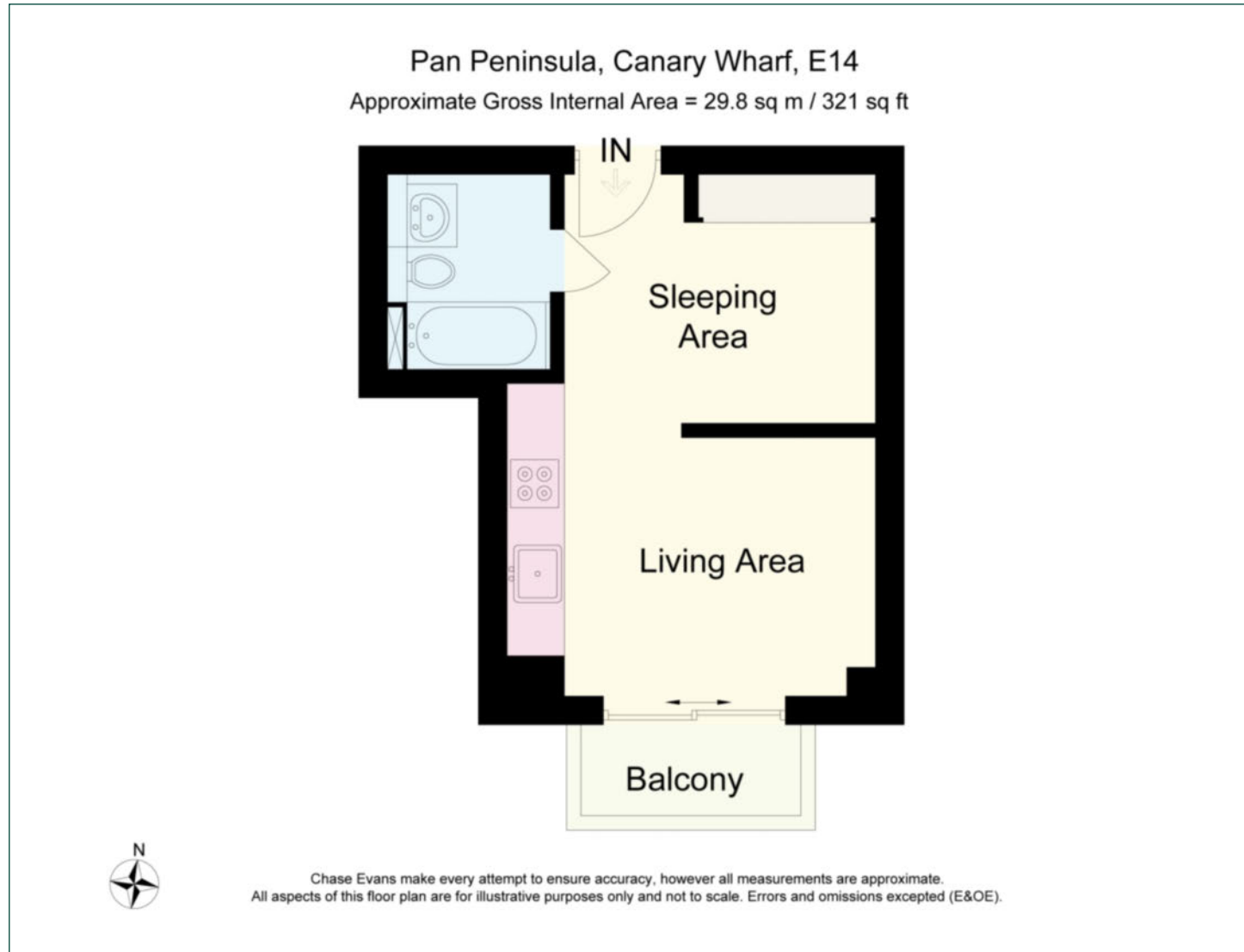
B

Security deposit:

equivalent to 5 weeks' rent

Floorplan

321 sq ft | 29.8 sq m



Pan Peninsula

Pan Peninsula, 1 Millharbour, London, E14 9XP

Lettings

020 7536 7900 | panp.lettings@chaseevans.com

We're here to help.

IMPORTANT NOTICE - These particulars have been prepared in good faith and they are not intended to constitute part of an offer or contract. We have not performed a structural survey on this property and the services, appliances and specific fittings have not been tested. All photographs, measurements, floor plans and distances referred to are given as a guide and should not be relied upon.

[chaseevans.com](https://www.chaseevans.com)