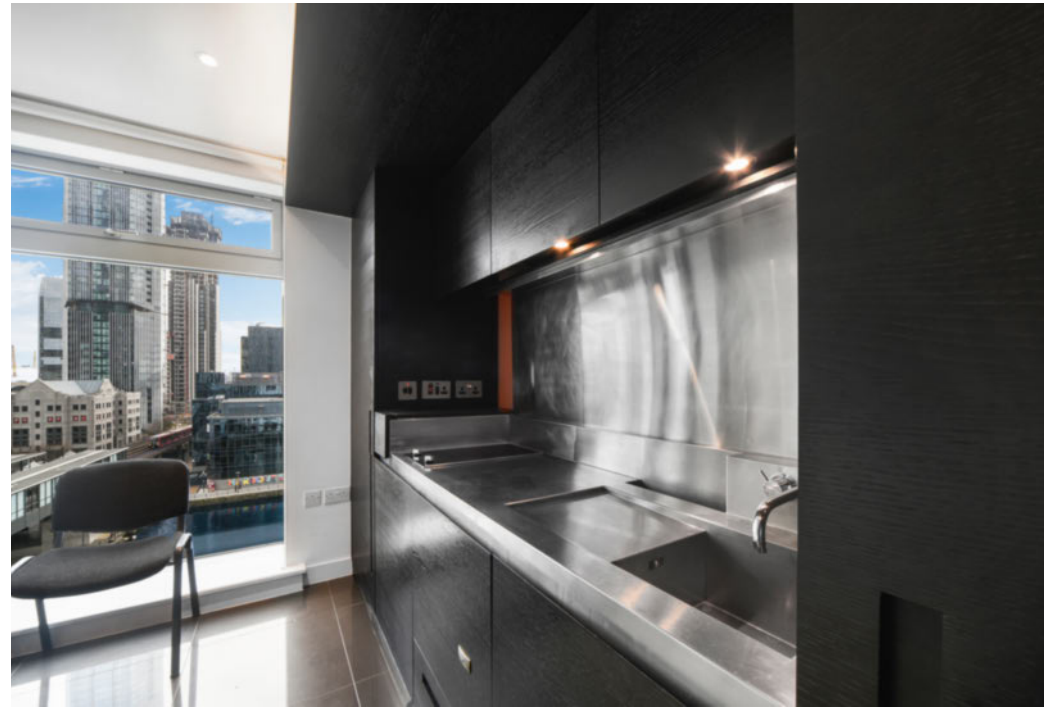




East Tower, Pan Peninsula, Pan Peninsula Square, Canary Wharf, E14

Price **£425 per week** | Furnished



East Tower, Pan Peninsula, Pan Peninsula Square, Canary Wharf, E14



Studio



1 Bathroom



1 Reception



Gymnasium



Local Amenities



24-Hour Concierge

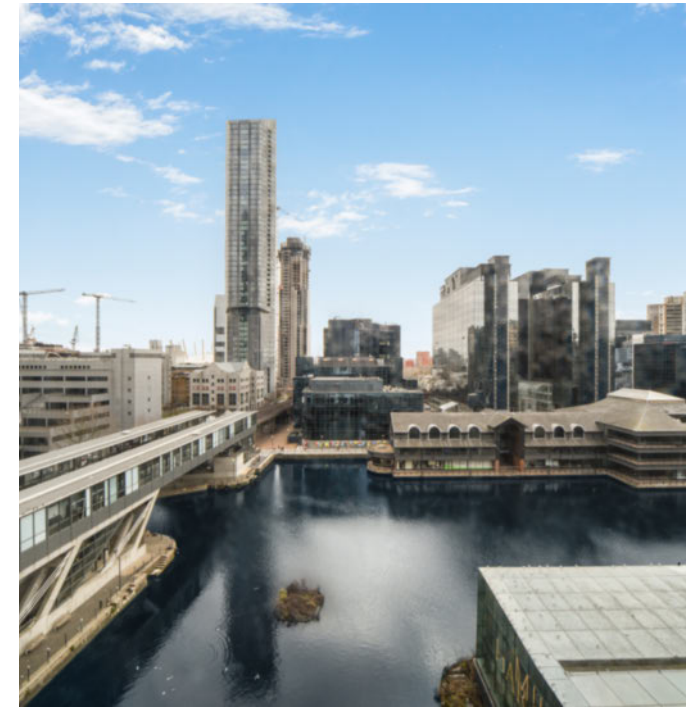


0.2 MI South Quay

An attractive studio apartment in Pan Peninsula's East Tower, E14. Including a bright, inviting living area, fully fitted & integrated kitchen, full height windows, tiled flooring, offering spectacular views, pull-down bed and a stylish marble bathroom suite.

Residents will also have access to a 24-hour concierge, an onsite private cinema, residents' gymnasium and swimming pool. The development is within walking distance of Canary Wharf, providing access to transport links and a great selection of amenities including the Canary Wharf Shopping Centre.

Situated just a 2-mins walk from South Quay DLR station which makes commutes to areas such as Bank achievable in just 14-mins. The development is also within walking distance of Canary Wharf Underground and the Elizabeth Line service for high-speed connection pan throughout the Capital.



Local Authority:

Tower Hamlets

Council Tax Band:

E

EPC:

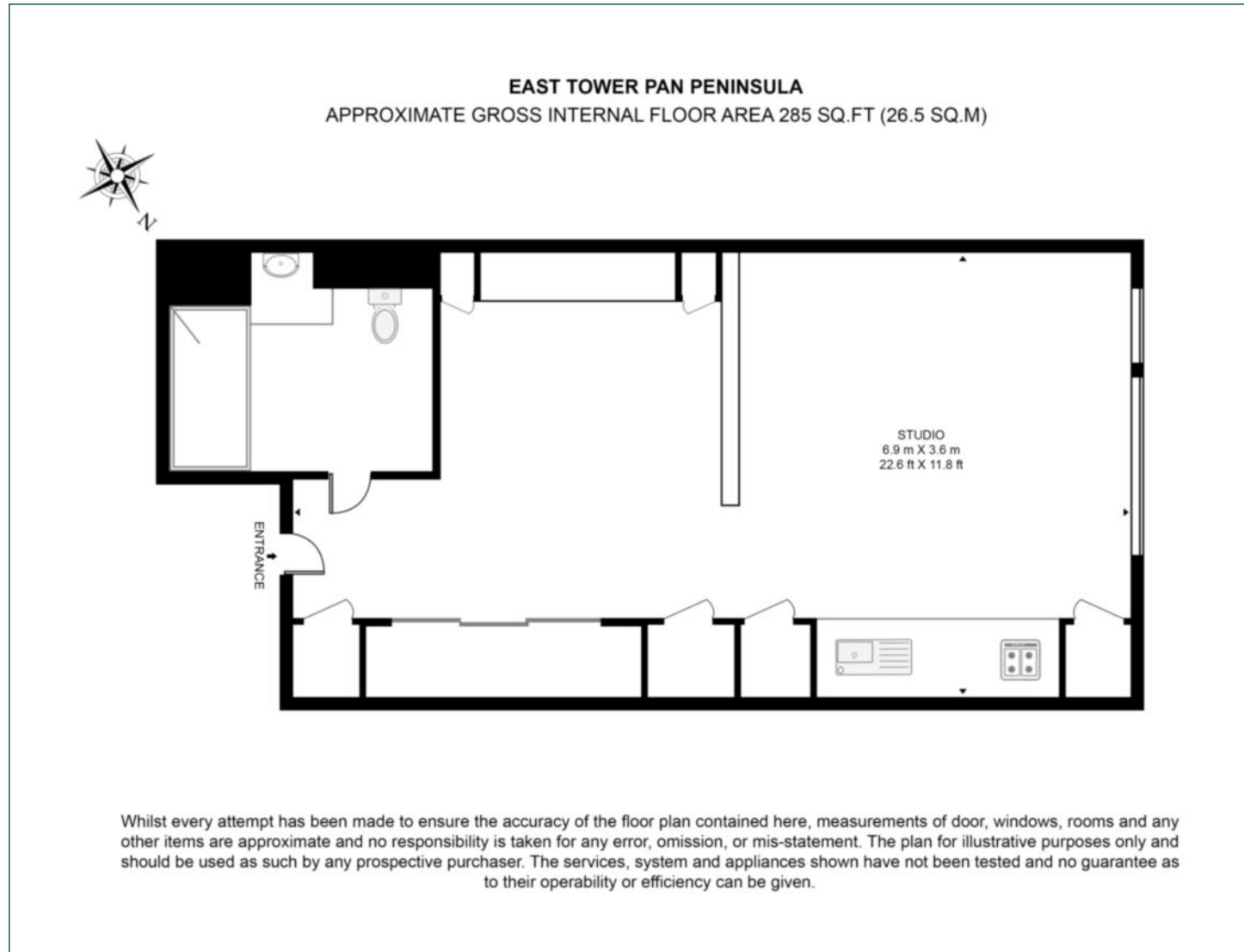
B

Security deposit:

equivalent to 5 weeks' rent

Floorplan

285 sq ft | 26.5 sq m



Pan Peninsula

Pan Peninsula, 1 Millharbour, London, E14 9XP

Lettings

020 7536 7900 | panp.lettings@chaseevans.com

We're here to help.

IMPORTANT NOTICE - These particulars have been prepared in good faith and they are not intended to constitute part of an offer or contract. We have not performed a structural survey on this property and the services, appliances and specific fittings have not been tested. All photographs, measurements, floor plans and distances referred to are given as a guide and should not be relied upon.

chaseevans.com