



## Discovery Dock Apartments East, South Quay Square, Canary Wharf, E14

Asking price **£629,000** | Leasehold



# Discovery Dock Apartments East, South Quay Square, Canary Wharf, E14



2 Bedrooms



2 Bathrooms



1 Reception



Balcony



Gymnasium



Local Amenities



24-Hour Concierge



0.1 MI South Quay

A large two bed, two bath apartment with parking set in a modern development located by South Dock and within easy reach of Canary Wharf. Features include a large living room with wood flooring, a semi open plan kitchen, a private balcony, two double bedrooms with the main bedroom having an en-suite shower room and a family bathroom.

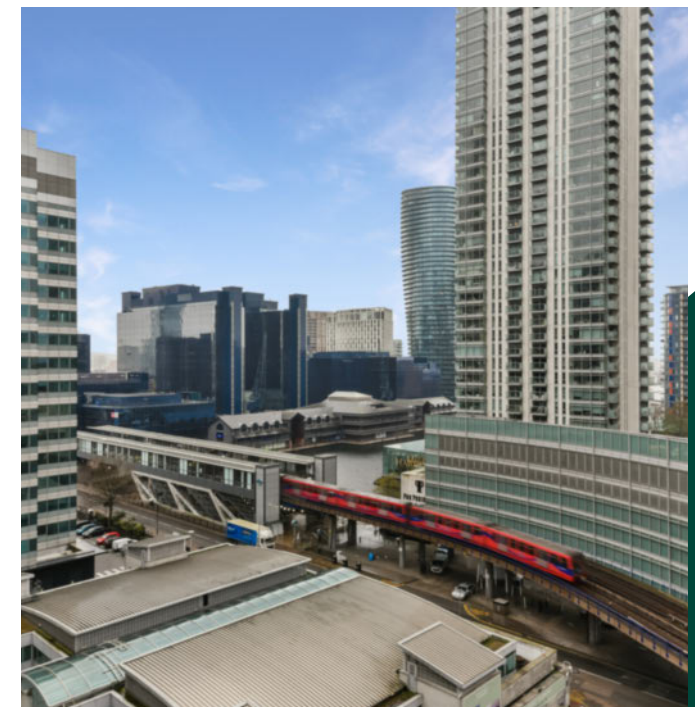
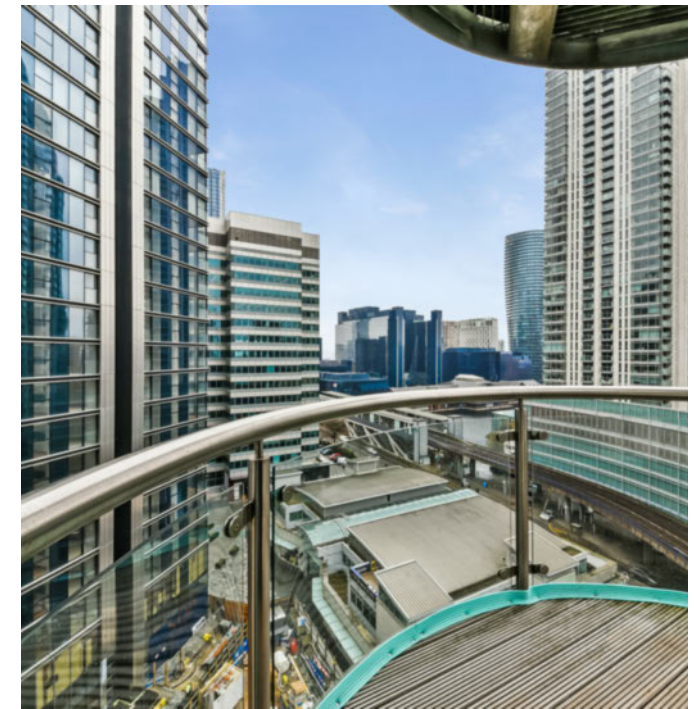
Residents have access to 24-hour concierge services plus an onsite gymnasium and swimming pool. The property is located close to Canary Wharf for all local amenities, such as shops, bars and

restaurants. The nearest tube station is South Quay, located minutes from the property, both the Jubilee and Elizabeth line are just a short distance away, offering excellent connectivity throughout the capital and beyond. Discovery Dock East's positioning gives you access to the very best that the vibrant district of Canary Wharf has to offer.

**Tenure:** Leasehold (977 years remaining) **Local Authority:** Tower Hamlets

**Ground Rent:** £250 p.a. **Council Tax Band:** F

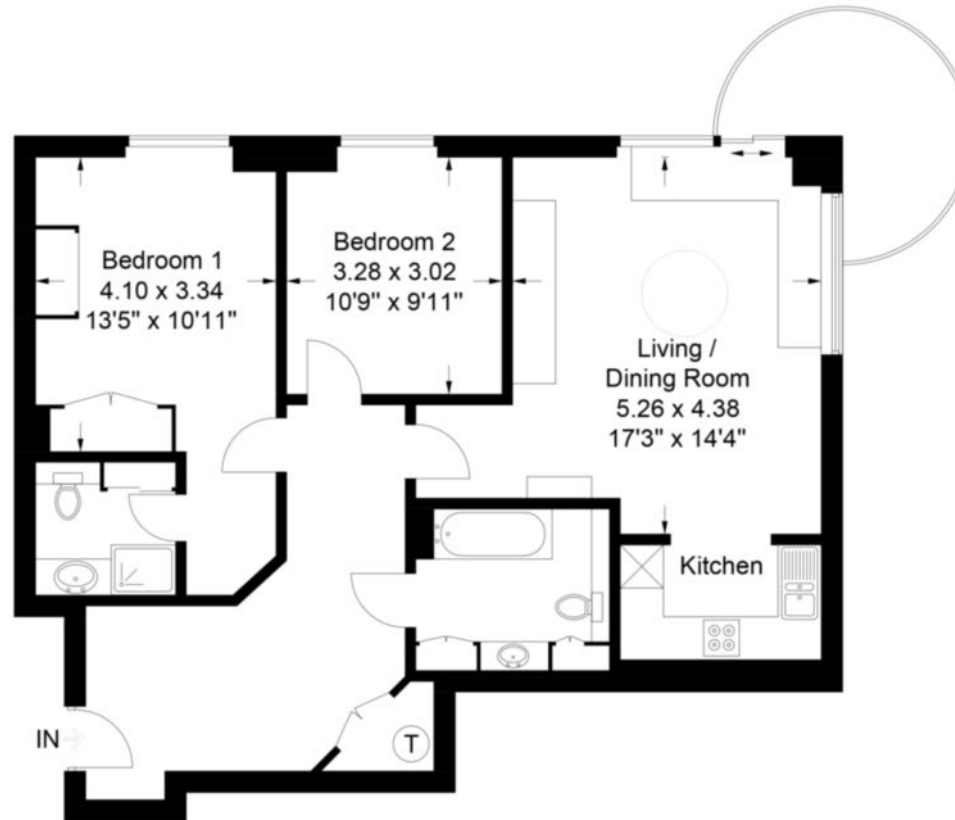
**Service Charge:** Approx. £9,198 p.a. **EPC:** B



# Floorplan

936 sq ft | 87.0 sq m

South Quay Square, E14  
Approximate Gross Internal Area = 87 sq m / 936 sq ft



Chase Evans makes every attempt to ensure accuracy, however all measurements are approximate. All aspects of this floor plan are for illustrative purposes only and not to scale. Errors and omissions excepted (E&OE).

## Pan Peninsula

Pan Peninsula, 1 Millharbour, London, E14 9XP

## Sales

020 7536 7901 | [panp.sales@chaseevans.com](mailto:panp.sales@chaseevans.com)

## We're here to help.

IMPORTANT NOTICE - These particulars have been prepared in good faith and they are not intended to constitute part of an offer or contract. We have not performed a structural survey on this property and the services, appliances and specific fittings have not been tested. All photographs, measurements, floor plans and distances referred to are given as a guide and should not be relied upon.

[chaseevans.com](https://www.chaseevans.com)

 Chase Evans