

East Tower, Pan Peninsula, Canary Wharf, E14

Price **£425 per week** | Furnished



East Tower, Pan Peninsula, Canary Wharf, E14



Studio



1 Bathroom



1 Reception



Private Balcony



Gym



Swimming Pool & Spa



Cinema Room



24-Hour Concierge



0.2 MI South Quay

Immaculately presented studio suite within Pan Peninsula's East Tower, Canary Wharf E14. Comprising an inviting, partitioned sleeping area with built-in sliding door wardrobe and a modern, luxury shower room suite. A bright and spacious open-plan living area with a contemporary fitted kitchen with integrated appliances and access to a generous south-facing balcony and ample storage space.

Residents will also have access to a 24-hour concierge service, split-level gymnasium with a 16-meter pool and spa, cinema room and dedicated

business suite. The development is located within walking distance of South Quay DLR Station and a great selection of amenities including the Canary Wharf Shopping Centre. The development is also within walking distance of Canary Wharf Station, providing access to transport links including the Jubilee Line and Elizabeth Line services for high-speed connection around the capital.

Local Authority: Tower Hamlets

Council Tax Band: E

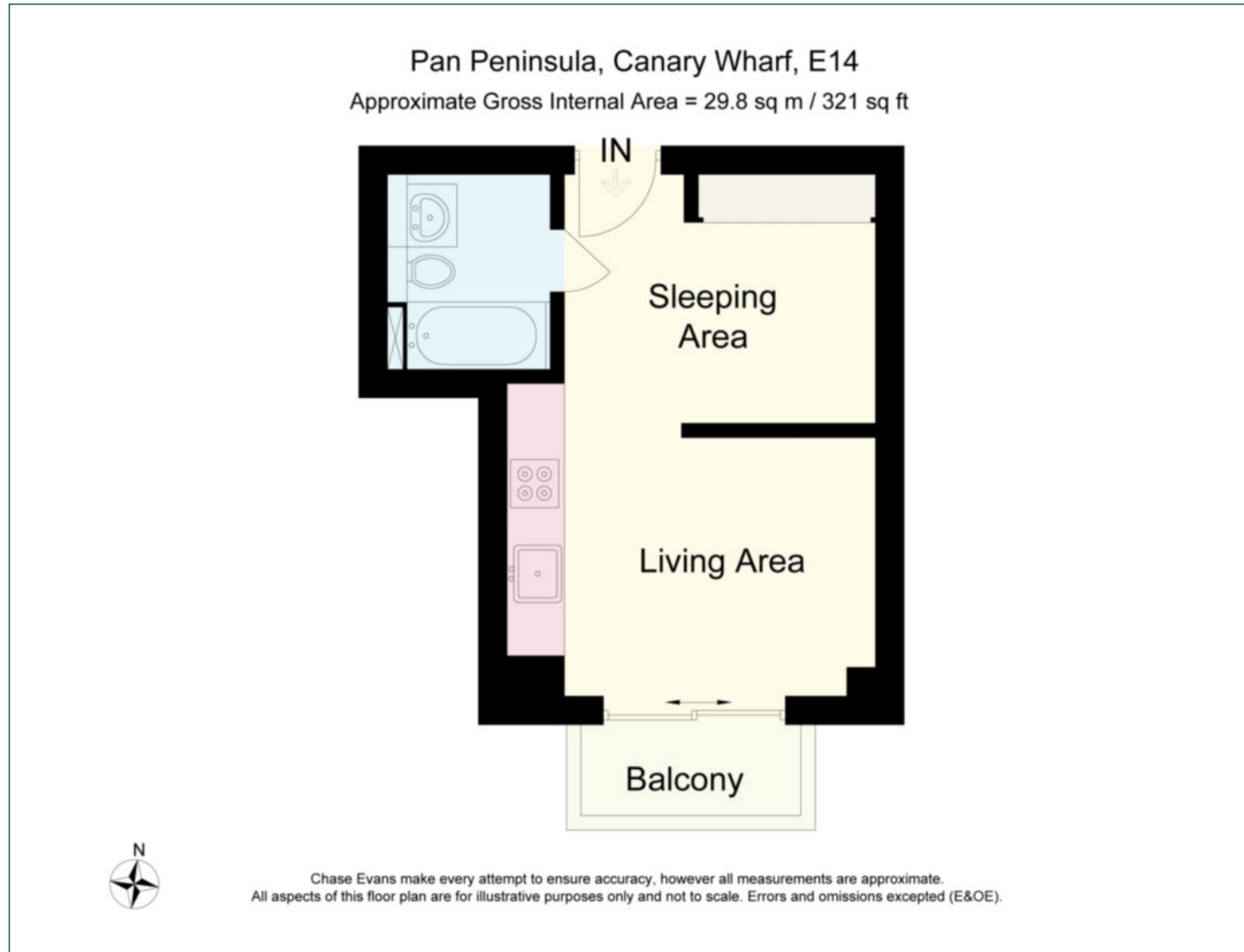
EPC: C

Security deposit: equivalent to 5 weeks' rent



Floorplan

321 sq ft | 29.8 sq m



Pan Peninsula

Pan Peninsula, 1 Millharbour, London, E14 9XP

Lettings

020 7536 7900 | panp.lettings@chaseevans.com

We're here to help.

IMPORTANT NOTICE - These particulars have been prepared in good faith and they are not intended to constitute part of an offer or contract. We have not performed a structural survey on this property and the services, appliances and specific fittings have not been tested. All photographs, measurements, floor plans and distances referred to are given as a guide and should not be relied upon.

[chaseevans.com](https://www.chaseevans.com)

 Chase Evans