

## West Tower, Pan Peninsula Square, Canary Wharf, E14

Asking price **£600,000** | Leasehold



# West Tower, Pan Peninsula Square, Canary Wharf, E14



2 Bedrooms



2 Bathrooms



1 Reception



Balcony



24-Hour Concierge



Gymnasium



Swimming Pool



Local Amenities



0.2 MI South Quay

A superb, refurbished to a high standard, two bedroom, two bathroom property with partial dock views arranged over 804 sq ft set within the West Tower of Pan Peninsula.

Features include a bright living room with floor-to-ceiling windows, wood flooring, a private balcony and a well equipped modern kitchen. Both bedrooms are double in size and have built-in wardrobes with the master bedroom also having an en suite shower room.

Residents will also have access to a 24-hour

concierge, an onsite private cinema, residents' gymnasium and swimming pool. The development is within walking distance of Canary Wharf, providing access to transport links and a great selection of amenities including the Canary Wharf Shopping Centre.

Situated just a 2-mins walk from South Quay DLR station which makes commutes to areas such as Bank achievable in just 14-mins. The development is also within walking distance of Canary Wharf Underground and the Elizabeth Line service for high-speed connection pan throughout the Capital.

**Tenure:** Leasehold (985 years remaining)

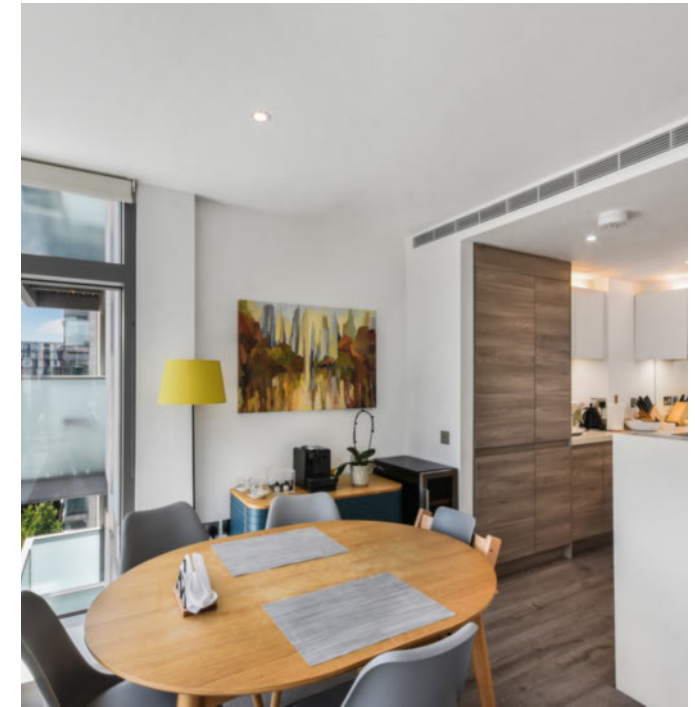
**Local Authority:** Tower Hamlets

**Ground Rent:** £750 p.a.

**Council Tax Band:** G

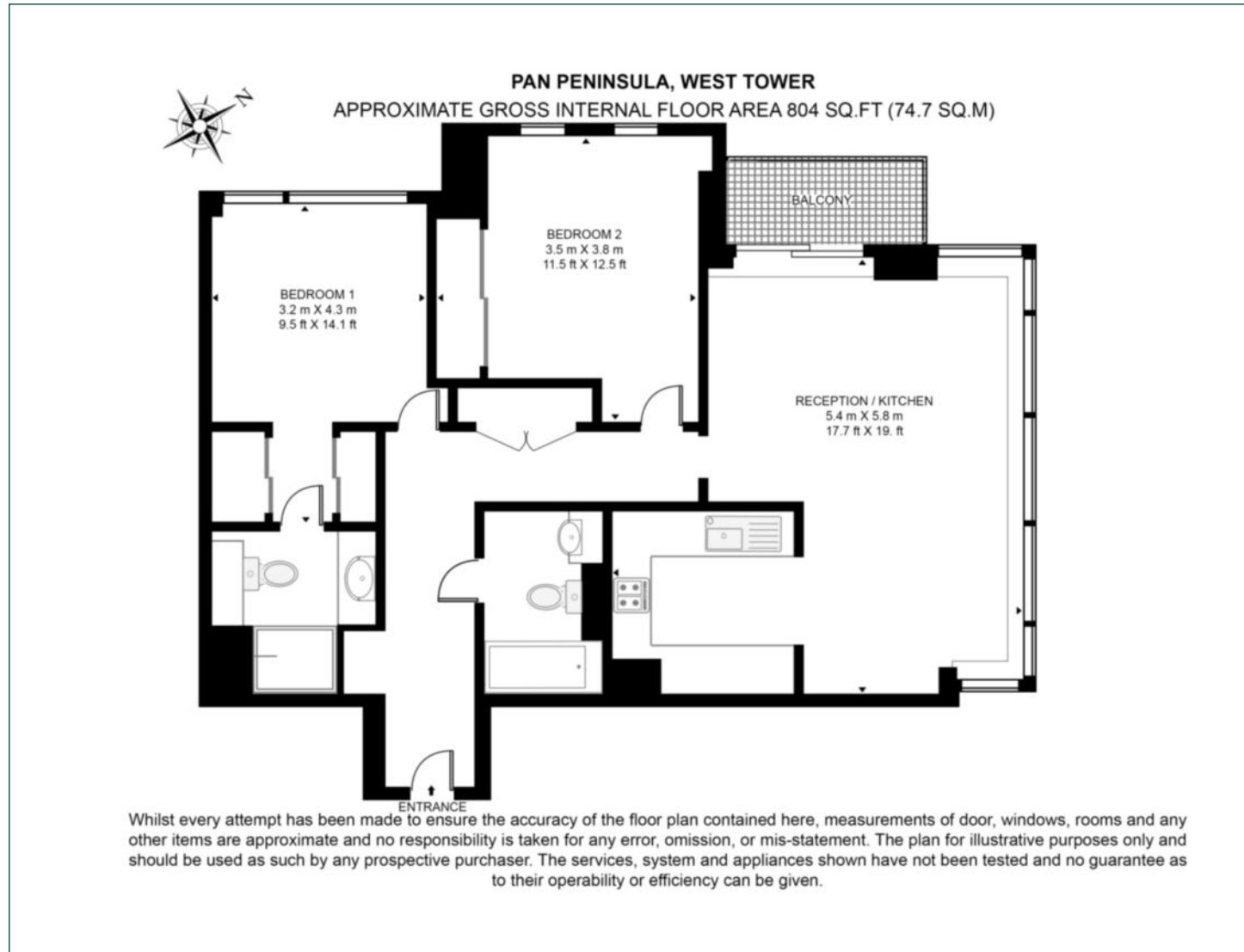
**Service Charge:** £11,000 p.a.

**EPC:** B



# Floorplan

804 sq ft | 74.7 sq m



## Pan Peninsula

Pan Peninsula, 1 Millharbour, London, E14 9XP

## Sales

020 7536 7901 | [panp.lettings@chaseevans.com](mailto:panp.lettings@chaseevans.com)

## We're here to help.

IMPORTANT NOTICE - These particulars have been prepared in good faith and they are not intended to constitute part of an offer or contract. We have not performed a structural survey on this property and the services, appliances and specific fittings have not been tested. All photographs, measurements, floor plans and distances referred to are given as a guide and should not be relied upon.

[chaseevans.com](https://www.chaseevans.com)

 Chase Evans