

Streamlight Tower, Province Square, Canary Wharf, E14

Price **£575 per week** | Furnished



Streamlight Tower, Province Square, Canary Wharf, E14



2 Bedrooms



2 Bathrooms



1 Reception



Balcony with
Stunning River Views



Concierge



Local Amenities of
Canary Wharf



0.2 MI Blackwall

A bright two bedroom, two bathroom apartment with stunning views set within a modern development located within easy reach of Canary Wharf E14. Features include a bright living room with tiled flooring and a private balcony affording views towards the Thames and Poplar Dock Marina and a well equipped open-plan kitchen. Both bedrooms are double in size and have integrated storage with the master having an en suite plus there is an additional main bathroom. Residents have the benefit of a concierge service.

The development is primarily located near to the amenities of Canary Wharf - the Canary Wharf Shopping Centre, shops, cafes, bars and restaurants, one of London's biggest roof gardens and an award-winning, free-to-visit, public art collection. Blackwall DLR station is just a 5 minute walk.

Local Authority:

Tower Hamlets

Council Tax Band:

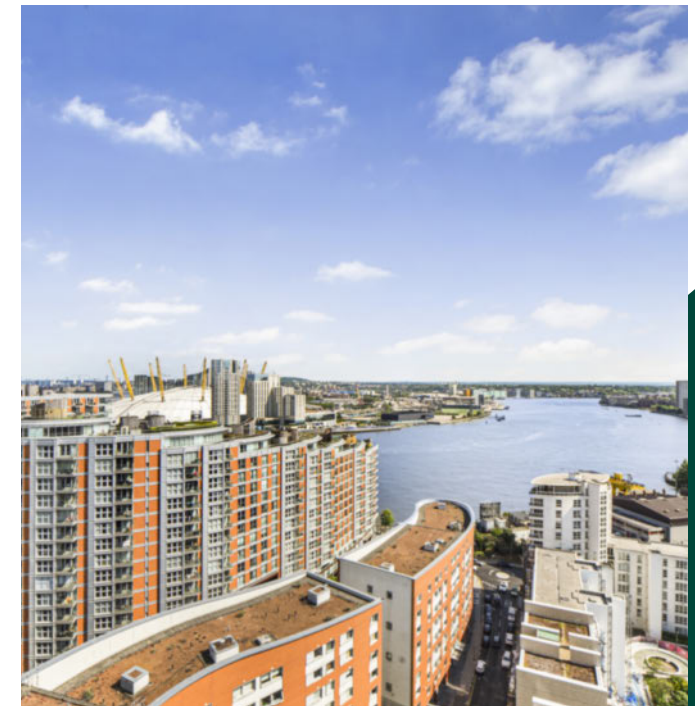
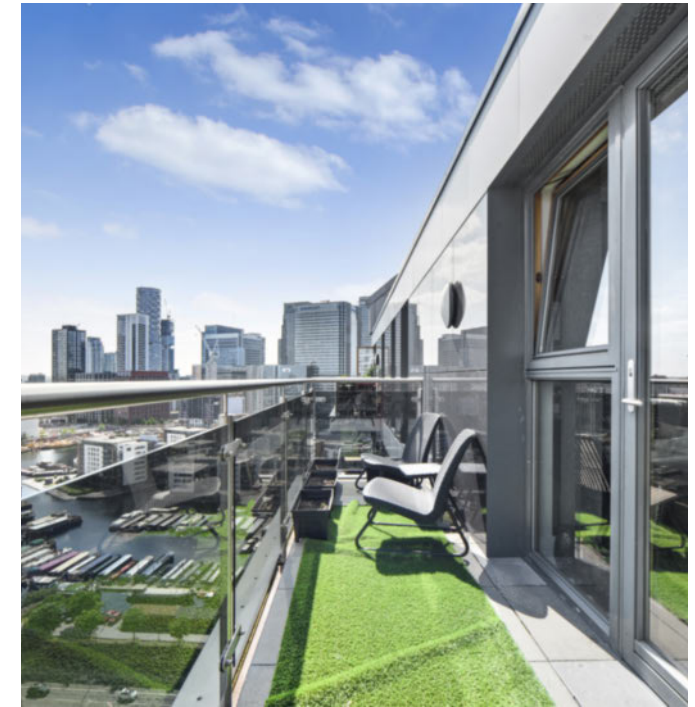
F

EPC:

B

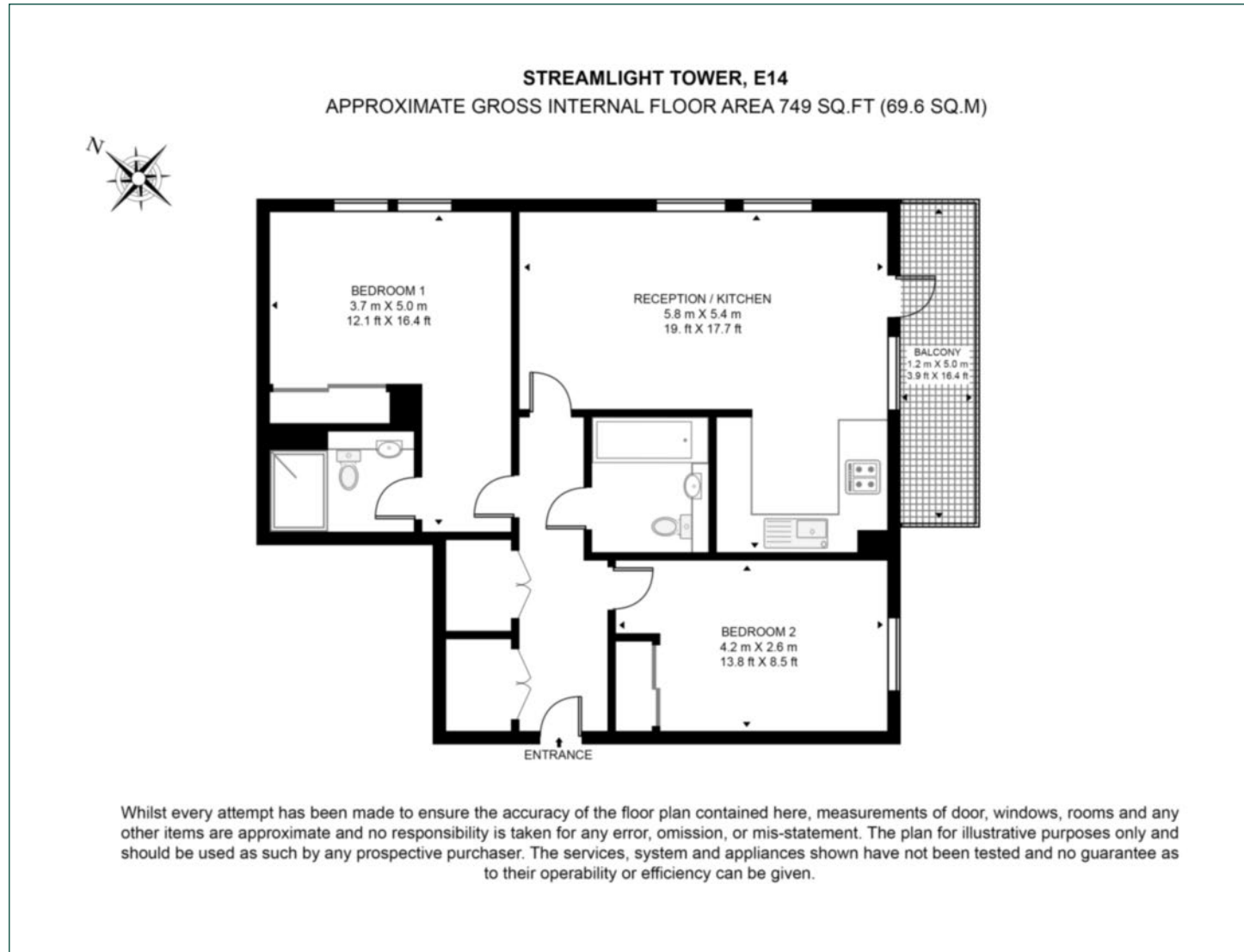
Security deposit:

equivalent to 5 weeks' rent



Floorplan

749 sq ft | 69.6 sq m



Pan Peninsula

Pan Peninsula, 1 Millharbour, London, E14 9XP

Lettings

+44 (0)20 7536 7900 | panp.lettings@chaseevans.com

We're here to help.

IMPORTANT NOTICE - These particulars have been prepared in good faith and they are not intended to constitute part of an offer or contract. We have not performed a structural survey on this property and the services, appliances and specific fittings have not been tested. All photographs, measurements, floor plans and distances referred to are given as a guide and should not be relied upon.

chaseevans.com