



## Landmark Pinnacle, The Landmark, Marsh Wall, Canary Wharf, E14

Price **£650 per week** | Furnished



# Landmark Pinnacle, The Landmark, Marsh Wall, Canary Wharf, E14



1 Bedroom



1 Bathroom



1 Reception



Gymnasium



Local Amenities



24-Hour Concierge



0.4 MI Canary Wharf

A west-facing one bedroom apartment in Landmark Pinnacle, the stunning riverside development set in the heart of Canary Wharf, E14. This bright property comprises an open-plan living area, high-spec fitted kitchen with breakfast bar, a spacious master bedroom with fitted wardrobes, a private winter garden with generous views across River Thames and central London, and a pristine smart bathroom suite.

Facilities include a 24-hour concierge, panoramic sky garden, sky terrace, table tennis room, private dining and meeting rooms, residents' lounge and

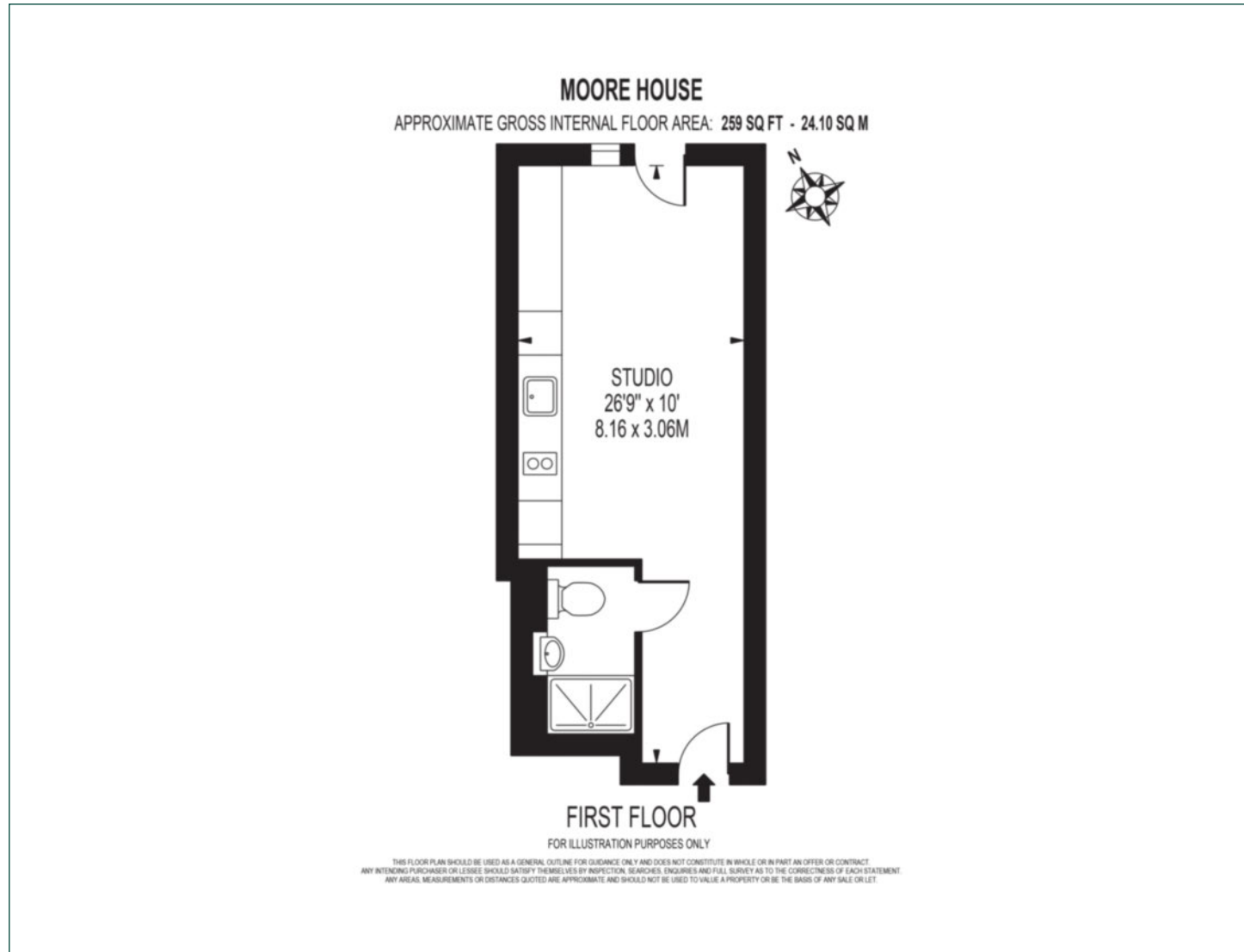
library, gym and studio, a private cinema-media room as well as the use of electric car charging point and secure bicycle storage.

The nearest station is Heron Quays DLR, only 0.2 miles away. 0.4 miles away from the underground station at Canary Wharf (Jubilee line, DLR) and 0.6 miles from the Canary Wharf Elizabeth's Station at North Dock.

<b>Local Authority:</b>	Tower Hamlets
<b>Council Tax Band:</b>	E
<b>EPC:</b>	B
<b>Security deposit:</b>	equivalent to 5 weeks' rent

# Floorplan

600 sq ft | 55.7 sq m



## Pan Peninsula

Pan Peninsula, 1 Millharbour, London, E14 9XP

## Lettings

020 7536 7900 | [panp.lettings@chaseevans.com](mailto:panp.lettings@chaseevans.com)

## We're here to help.

IMPORTANT NOTICE - These particulars have been prepared in good faith and they are not intended to constitute part of an offer or contract. We have not performed a structural survey on this property and the services, appliances and specific fittings have not been tested. All photographs, measurements, floor plans and distances referred to are given as a guide and should not be relied upon.

[chaseevans.com](https://www.chaseevans.com)