



Wheatsheaf Close, Isle of Dogs, E14

Asking price **£400,000** | Leasehold



Wheatsheaf Close, Isle of Dogs, E14



2 Bedrooms



2 Bathrooms



1 Reception



River Views



Parking



Local Amenities



0.2 MI Mudchute

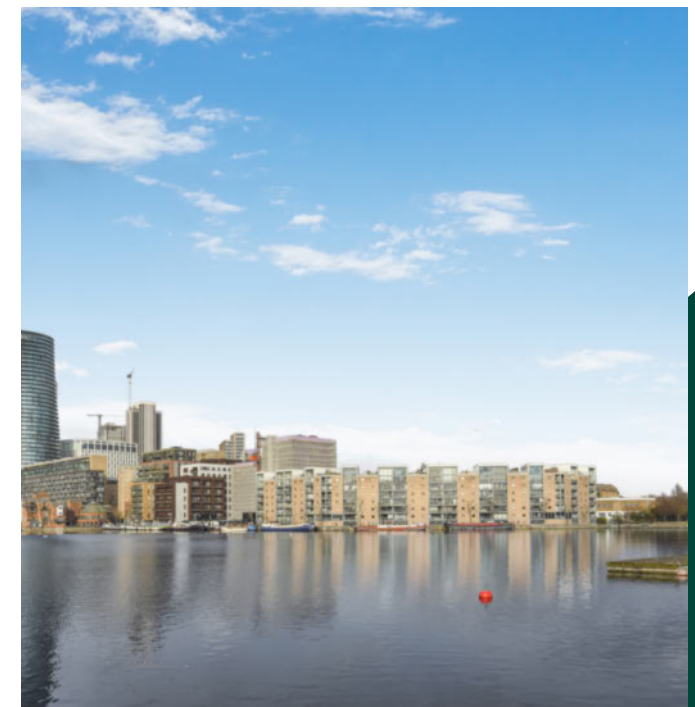
A two bedroom, two bathroom apartment with dock views and parking set on the 2nd floor of a modern development located close to Mudchute DLR and Millwall Park.

Features include a living room with views towards Millwall outer dock, a separate kitchen, wood flooring, main bedroom with an en-suite shower room, second bedroom and a family bathroom.

Positioned by Millwall Outer Dock and close to plenty of green spaces with Mudchute Park and Farm and Millwall Park located close by. Asda

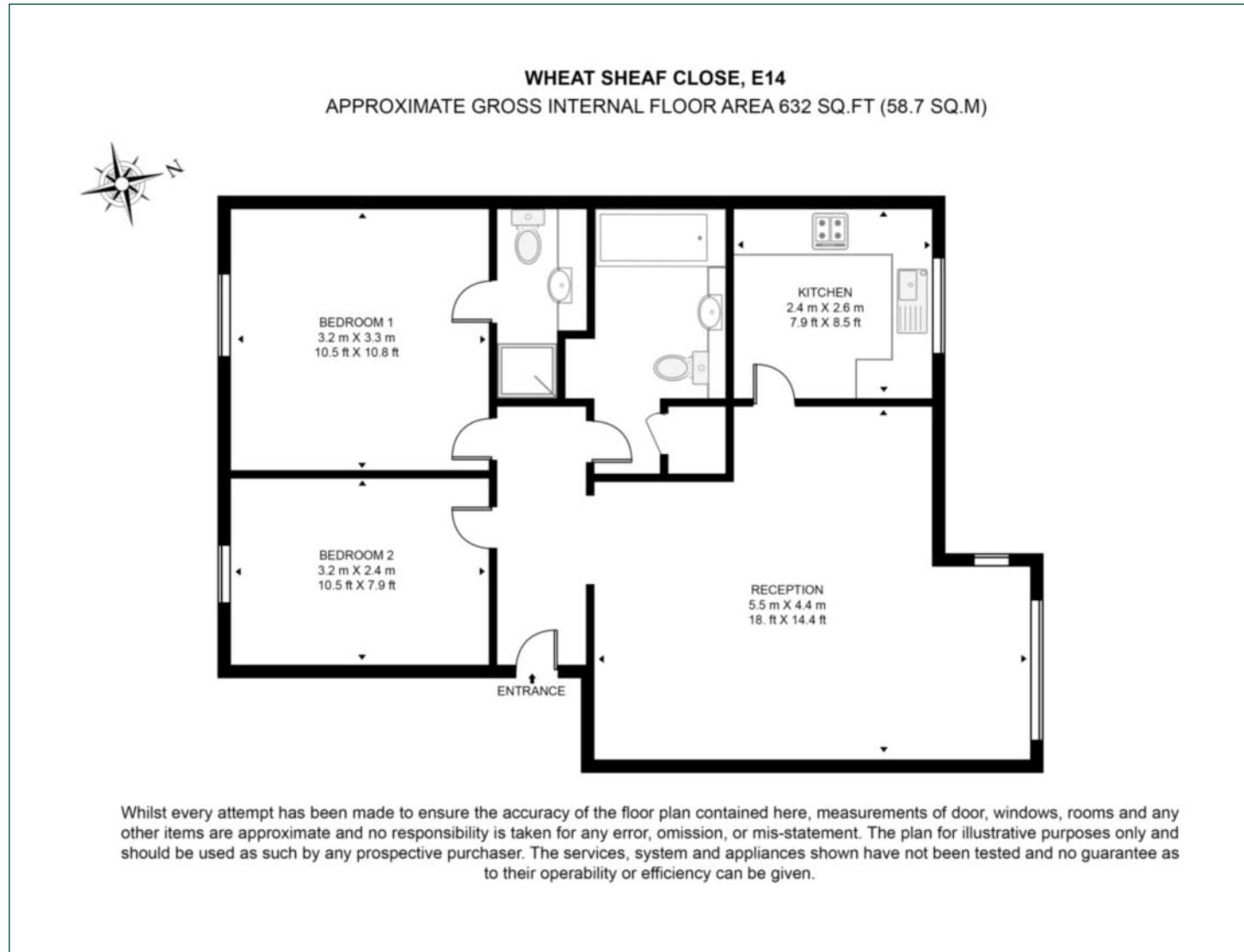
supermarket and other close amenities are a short walk. Mudchute DLR station is 0.1 mile away affording excellent links into and out of London.

Tenure:	Leasehold (129 years remaining)	Local Authority:	Tower Hamlets
Ground Rent:	N/A	Council Tax Band:	E
Service Charge:	£2,000 p.a.	EPC:	C



Floorplan

632 sq ft | 58.7 sq m



Pan Peninsula

Pan Peninsula, 1 Millharbour, London, E14 9XP

Sales

020 7536 7901 | panp.sales@chaseevans.com

We're here to help.

IMPORTANT NOTICE - These particulars have been prepared in good faith and they are not intended to constitute part of an offer or contract. We have not performed a structural survey on this property and the services, appliances and specific fittings have not been tested. All photographs, measurements, floor plans and distances referred to are given as a guide and should not be relied upon.

[chaseevans.com](https://www.chaseevans.com)